

## SolarInvert Energy Solutions

# 12v lithium battery pack terminates discharge



## Overview

---

What is a 12V lithium battery discharge termination voltage?

The 12v lithium battery discharge termination voltage means that after the lithium battery pack is discharged to a certain voltage, it should not continue to discharge, otherwise it will cause irreversible loss of part of the lithium battery's power, and the battery will be completely damaged in serious cases.

How long does it take to discharge a lithium ion battery pack?

The nominal voltage of each cell is 3.7 and thus the total voltage of the battery pack is vary between 11 to 12 volts. It takes 4000 seconds to discharge the lithium-ion battery pack completely to zero SOC. The below circuit shows the current and voltage of the battery pack.

How to discharge a lithium ion battery?

1. Methods of Discharging a Lithium-ion Battery Using a load to discharge a lithium-ion battery is a relatively safe and precise method. These specialized load devices can be set to appropriate working current and voltage according to the battery specifications (such as voltage and current).

What is the discharge termination voltage of 3 polymer lithium batteries?

The discharge termination voltage of three polymer 12v lithium batteries should not be less than  $2.75 \times 3 = 8.25$  (3 is the number of batteries in series). Therefore, the 12v lithium battery discharge cut-off voltage is 8.25V, which is the lowest in practical use. Lower than  $2.5V \times 3 = 7.5V$ .

What is a lithium ion battery discharging circuit?

This is a discharging circuit of the lithium-ion battery pack which consists of three lithium-ion cells, load resistance, MOSFET, relational operator, constant, display, current measurement, voltage measurement, etc. The three batteries or cells are connected in series with the load resistance.

What is the lowest discharge voltage for a lithium battery?

Therefore, the 12v lithium battery discharge cut-off voltage is 8.25V, which is the lowest in practical use. Lower than  $2.5V \times 3 = 7.5V$ . Because the iron phosphate 12v lithium battery pack adopts four series connection, that is, the single lowest discharge voltage  $\times$  the number of series = termination voltage, which is  $2 \times 4 = 8v$ .

## 12v lithium battery pack terminates discharge

---



### LiFePO4 Voltage Charts (1 Cell, 12V, 24V, 48V)

Jun 8, 2022 · Explore the LiFePO4 voltage chart to understand the state of charge for 1 cell, 12V, 24V, and 48V batteries, as well as 3.2V LiFePO4 cells.

[Get Started](#)

## 12V Lithium Battery: A Comprehensive Guide

Sep 11, 2024 · A 12V lithium battery is a type of rechargeable battery that utilizes lithium-ion chemistry to store and release energy. It's designed to provide a ...



51.2V 150AH, 7.68KWH

[Get Started](#)



## Rechargeable 12v Lithium ion Battery Pack Manufacturer

We use the latest lithium battery technologies to make the 12v rechargeable battery pack just ensure that you can get the highest quality and less or even no customer returns, we work with ...

[Get Started](#)

## Tracer 12V 22Ah Lithium Polymer Battery Pack

The Tracer 12V 22Ah Lithium Polymer Battery Pack is our most popular LiPo. Weighing only 1250g this battery can fit in your hand and offers reliable power.

[Get Started](#)



## Li-Ion Cells: Charging and Discharging Explained ...

Jun 12, 2024 · Lithium-ion (li-ion) cells have revolutionized the way we power our modern devices. From smartphones and laptops to electric vehicles, these ...

[Get Started](#)

## Lithium-ion Battery Packs: Overcharge & Discharge Issues

Jul 23, 2025 · In the real-world application of lithium-ion battery packs, performance issues like overcharged-low discharge and undercharged-high discharge are common causes of ...

[Get Started](#)



## At What Voltage is a 12V Lithium-Ion Battery Dead

Jul 31, 2025 · At what voltage does a 12V lithium-ion battery truly become "dead"?



A 12V lithium-ion battery is considered dead when its voltage drops to approximately 8 volts. This lower limit ...

[Get Started](#)

## How to Revive a Lithium-Ion Battery: Step-by ...

Nov 21, 2024 · Knowing and understanding these causes is important to safely revive lithium ion battery or consider techniques like rebuilding lithium battery ...

[Get Started](#)



## Lithium Deep Cycle Batteries » 12v Lithium Batteries

Australian engineered 12v lithium deep cycle batteries online & in our Perth store. Fast shipping Australia wide. 30-day money-back guarantee!

[Get Started](#)

## How to Discharge a Lithium Battery: A Step-by-Step Guide

Nov 2, 2023 · 1. Never discharge a lithium battery below its recommended

minimum voltage. Doing so can cause irreversible damage and render the battery unusable. 2. Pay attention to ...

[Get Started](#)



## 12V 14Ah Rechargeable Lithium Battery Packs

In Stock 12V Battery Packs Since the 12V Rechargeable lithium ion battery pack is popular in many field of application. DNK have already designed many ...

[Get Started](#)

## Explain Charging and Discharging of Lithium-Ion ...

Feb 7, 2025 · Learn how lithium-ion batteries charge and discharge, key components, and best practices to extend lifespan. Discover safe charging ...

[Get Started](#)



## Discharge Lithium Ion Battery: How to Do It Safely and ...

Feb 23, 2024 · Discharging a lithium-ion battery safely involves avoiding extreme



voltages, using controlled methods like power resistors or specialized dischargers, and monitoring ...

[Get Started](#)



1 day ago · I. Core Functional Modules (Key to Performance) Battery Pack (Energy Storage Core) Function: A "reservoir" for storing electrical energy, the primary determinant of power supply ...

[Get Started](#)



## Optimal Lithium Battery Charging: A Definitive ...

Mar 12, 2024 · Unlock the secrets of charging lithium battery packs correctly for optimal performance and longevity. Expert tips and techniques revealed in our ...

[Get Started](#)

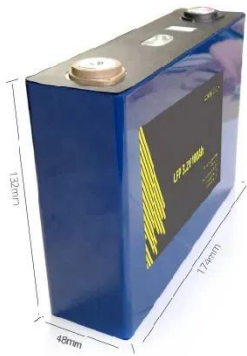


## What Is The End-of-discharge Voltage Of A 12v Lithium Battery



Aug 17, 2025 · The 12v lithium battery discharge termination voltage means that after the lithium battery pack is discharged to a certain voltage, it should not continue to discharge, otherwise it ...

[Get Started](#)



## 5 Best 12 Volt Lithium RV Batteries Reviewed

Apr 23, 2023 · RV lithium batteries are becoming a popular choice among campers because of their lightweight and long life. Here are some of the best ...

[Get Started](#)

## 12v lithium battery pack terminates discharge

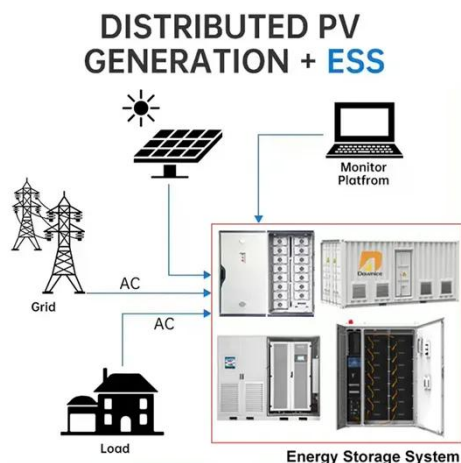
The 12v lithium battery discharge termination voltage means that after the lithium battery pack is discharged to a certain voltage, it should not continue to discharge, otherwise it will cause ...

[Get Started](#)



## How to Use Repair Mode on a 10 Amp LiFePO4 Battery ...

Jul 31, 2025 · You can use repair mode on a 10A LiFePO4 charger to recover



over-discharged batteries--but it requires precision. This feature is a lifeline for seemingly dead batteries, yet ...

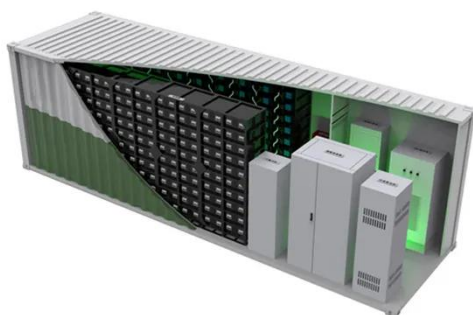
[Get Started](#)

## The Right Way to Charge Your Lithium Battery ...

The Right Way to Charge Your Lithium Battery Pack Since in 1970 the coming of primary lithium battery and 1990 SONY launched lithium ion battery Cell ...



[Get Started](#)



## How Battery Management Systems (BMS) Prevent Battery ...

Apr 22, 2025 · To maximize performance and safety, a Battery Management System (BMS) is a critical battery system component. The BMS monitors and manages various aspects of battery ...

[Get Started](#)

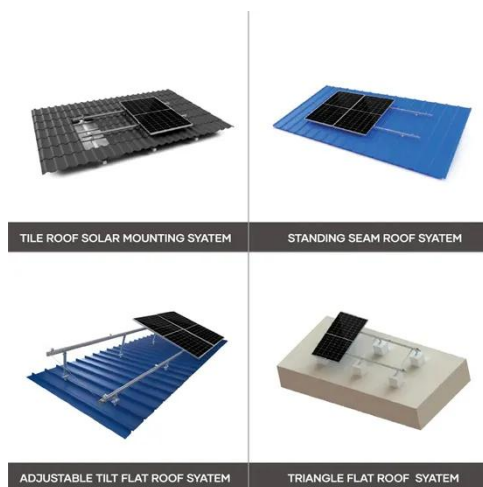
## 12V Lithium-Ion Battery: What Voltage at Full ...

Jan 10, 2025 · This guide explains 12V

lithium-ion battery voltage, what "fully charged" means, and why voltage discrepancies occur, with tips for optimal

...

[Get Started](#)



## Lithium (LiFePO4) Battery Charge Time ...

Mar 3, 2023 · Calculating the battery's exact charge time is not an easy task. However, you can use our lithium battery charge time calculator to find out.

[Get Started](#)

## Lithium-Ion Battery Pack Discharging Circuit Matlab ...

Jul 18, 2020 · In this article, I will show a lithium-ion battery pack of 12 volts and 2600mAh. I will do a simulation in Matlab Simulink and I will give an explanation of each component, its ...

[Get Started](#)



## Best and fastest way to drain a battery , All About Circuits

Nov 15, 2012 · What's the best and fastest way to drain lithium ion



batteries? I have about 10 14V lithium ion batteries to fully discharged right now I'm using an halogen lamp but it takes about ...

[Get Started](#)

---

## 12V 20Ah LiFePO4 Battery (2 Packs), IP67 ...

Dec 8, 2024 · Buy GOLDENMATE 12V 20Ah LiFePO4 Battery (2 Packs), IP67 Waterproof, 12V Lithium Battery with 5000+ Deep Cycles, Built-in BMS & ...

[Get Started](#)



---

## 2 Packs 12V 300Ah LiFePO4 Battery 200A BMS 3840Wh Lithium ...

Mar 21, 2025 · About this item 2 Pack 300Ah Lifepo4 Battery: 300 amp hour lithium battery 12v offer a higher energy density compared to lead-acid batteries, but only have 1/3 the weight of ...

[Get Started](#)

---

## Comprehensive Guide to Lithium-Ion Battery ...

Nov 30, 2023 · Explore the intricacies of

lithium-ion battery discharge curve analysis, covering electrode potential, voltage, and performance testing methods.

[Get Started](#)



---

## Contact Us

For catalog requests, pricing, or partnerships, please visit:  
<https://www.persianasaranda.es>