

SolarInvert Energy Solutions

Base station power protection circuit

114KWh ESS



PICC
QUALITY ASSURANCE

RoHS



MSDS

UN38.3

**UK
CA**



Overview

How does a macro base station work?

In a macro base station application, input protection, rectifier, and filter convert the AC input to DC. Since it interfaces with the AC line, it needs the full suite of overcurrent and overvoltage transient protection.

What is a base station & how does it work?

The base station connects the core network to the individual mobile phones and other wireless devices such as watches, tablets, and IoT devices via both transmission and reception.

What is power system protection?

Protection in the context of electrical power systems involves measures and equipment designed to detect and respond to abnormal operating conditions, faults, and disturbances. Its main objectives are: 1. Power system protection is essential for maintaining the reliability, safety, and stability of electrical power systems.

What is a power supply protection system?

They are used, as the name implies, to protect either the power supply from being forced to deliver excessive current into overload or short circuit or to protect the connected circuit from a reverse connected power supply or a voltage that exceeds the circuit design voltage. They can be classified as follows:.

How does a baseband RF unit work?

Digital packets from the baseband unit are converted to analog data and upconverted for RF transmission. Received RF signals are down-converted and digitized for transmission to the baseband unit. The power input circuit provides the DC power for the other AAS circuits. On the input stage, a fuse for overcurrent protection is recommended.

What is a line protection system?

Line Protection: Line protection schemes protect transmission and distribution lines from faults, including short circuits and overloads. 7. Basic relay terminology: Relay: An electrical or electronic device that uses an electromagnetic coil to control one or more switch contacts.

Base station power protection circuit



Power Base Stations Circuit Protection , Huijue Group E-Site

The emerging IEEE P1847 standard (slated for 2024 ratification) mandates machine learning in power base stations protection systems. Imagine protection modules that predict capacitor ...

[Get Started](#)

An Integrated Control and Protection Scheme Based on

Aug 6, 2020 · An Integrated Control and Protection Scheme Based on FBSM-MMC Active Current Limiting Strategy for DC Distribution Network IEEE Journal of Emerging and Selected Topics ...



[Get Started](#)

Designing to Protect 5G Macro Base Stations for High ...

Oct 9, 2020 · The ratio between real, usable power (measured in watts) and the total real-plus-reactive power is known as the power factor. A power factor correction (PFC) circuit ...



[Get Started](#)

Surge Protection for Cell Sites

Aug 14, 2023 · Moreover, the base station contains secondary systems like cooling or emergency power supply, which might also need extra surge protection. For safeguarding the base ...

[Get Started](#)



Complete Guide to Electronic Protection Circuits

1 day ago · All electronic devices need protection circuits. They are used, as the name implies, to protect either the power supply from being forced to deliver ...

[Get Started](#)

Wireless Network Base Station AC and DC Power Line ...

Wireless network base stations need protection from overvoltage and overcurrents. These conditions are due to lightning strikes, power line accidents, and other disturbances. Most ...

[Get Started](#)



Designing to Protect 5G Macro Base Stations for ...

Mar 10, 2022 · As with other circuits in the baseband unit, a TVS diode will



provide either uni-directional or bi-directional ESD protection up to 30 kV. ...

[Get Started](#)

????????(??) , ?? , MPS

?????? ?????????????????,????? ??????????
 ????????? 2A ? 3A ?????????,????????,???
 ...

[Get Started](#)



**Wireless Network Base Station
AC and DC Power Line ...**

Oct 26, 2015 · Wireless network base stations need protection from over voltage and over currents which can be caused by lightning and power line accidents and other disturbances. ...

[Get Started](#)

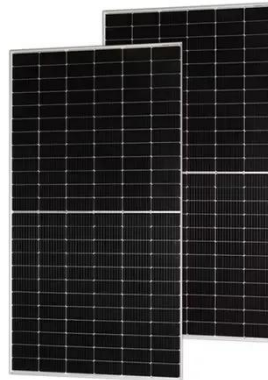


**Base Station Solar Storage
Integrated System Solution**

Apr 17, 2025 · Safer: built-in surge protector, circuit breaker, reverse

protection, overvoltage protection, etc.
Base station DC lamination. Base station
energy storage. Glossy hybrid base ...

[Get Started](#)



Selecting the Right Supplies for Powering 5G Base Stations

In summary, ADI's Power by Linear
product portfolio comprises low noise
LDO regulators, low EMI, highly
integrated multirail dc-to-dc converter
µModule devices, Silent Switcher ...

[Get Started](#)

Wireless Network Base Station AC and DC Power Line ...

work base stations need protection from
overvoltage and overcurrents. These
conditions are due to lightning strikes,
power line accidents, and other
disturbances. Most base stations are in
...

[Get Started](#)



Communication Base Station Smart Hybrid PV Power ...

Jul 9, 2025 · The module has the



advantages Of high reliability, applicable for most of scenarios, and easy maintenance. It has been widely used in communication base stations and oil Wells ...

[Get Started](#)

Protecting 5G Macro Base Station Amplifiers and ...

Dec 31, 2021 · This article provides a detailed description of a macro base station and offers recommendations for protecting the base station circuitry, namely ...

[Get Started](#)



POWER SYSTEM PROTECTION

Dec 18, 2024 · Station Type Valve Lightning Arrester - This type of valve is mainly employed for the protection of the critical power equipment in the circuit of 2.2kV to 400kV and higher.

[Get Started](#)

Contact Us

For catalog requests, pricing, or partnerships, please visit:

<https://www.persianasaranda.es>