

## SolarInvert Energy Solutions

**Can a 120v lithium battery be used with a 600w inverter**



## Overview

---

Note! The battery size will be based on running your inverter at its full capacity  
Assumptions 1. Modified sine wave inverter efficiency: 85% 2. Pure sine wave inverter efficiency: 90% 3. Lithium Battery: 100% Depth of discharge limit 4. lead-acid Battery: 50% Depth of discharge limit Instructions!.

To calculate the battery capacity for your inverter use this formula  $\text{Inverter capacity (W)} \times \text{Runtime (hrs)} / \text{solar system voltage} = \text{Battery Size} \times 1.15$  Multiply the result by 2 for lead-acid type.

You would need around 24v150Ah Lithium or 24v 300Ah Lead-acid Battery to run a 3000-watt inverter for 1 hour at its full capacity .

Related Posts 1. What Will An Inverter Run & For How Long?

2. Solar Battery Charge Time Calculator 3. Solar Panel Calculator For Battery: What Size Solar Panel Do I Need?

I hope this short guide was helpful to you, if you have any queries Contact us do drop a.

Here's a battery size chart for any size inverter with 1 hour of load runtime  
Note! The input voltage of the inverter should match the battery voltage. (For example 12v battery for 12v.

While many inverters can be adapted to work with lithium-ion batteries, it's essential to check the specifications and compatibility of your particular inverter model. Can a lithium battery run a 1000W inverter?

**Battery Discharge Rate:** Lithium batteries can handle high discharge rates, which aligns well with the power demands of a 1000W inverter. However, verify that the battery's maximum discharge rate exceeds the inverter's power draw. **Temperature and Maintenance:** Lithium batteries perform best within specific temperature ranges.

Which battery should I use for my inverter?

When it comes to powering your inverter, there are a few alternative options

to consider aside from lithium batteries. While lithium batteries have gained popularity due to their numerous advantages, they may not be the right choice for everyone. One alternative option is lead-acid batteries.

Are inverters compatible with lithium batteries?

Understanding the basics of inverters and different battery options sets the stage for exploring the compatibility between inverters and lithium batteries. Lithium batteries have revolutionized the world of inverters, offering a range of advantages that make them an ideal choice for powering these devices.

Why do lithium batteries need inverters?

With today's lithium batteries, inverters play a big part due to the energy that a lithium battery can deliver. For lithium batteries that run external BMS systems, the output current restrictions are much less compared to a lithium battery with an internal BMS system.

What voltage should a 12V inverter run on?

The input voltage of the inverter should match the battery voltage. (For example 12v battery for 12v inverter, 24v battery for 24v inverter and 48v battery for 48v inverter Summary What Will An Inverter Run & For How Long?

.

How does efficiency affect a 1000W inverter?

Efficiency impacts the actual power delivered to the devices. Battery Discharge Rate: Lithium batteries can handle high discharge rates, which aligns well with the power demands of a 1000W inverter. However, verify that the battery's maximum discharge rate exceeds the inverter's power draw.

## Can a 120v lithium battery be used with a 600w inverter

---



### Can an Inverter Be Too Big for Your Battery System?

For a 12V 200Ah battery (2.4kWh), a 2000W inverter is ideal. Formula: Inverter Wattage  $\leq$  (Battery Voltage  $\times$  Ah Rating  $\times$  0.8). Factor in surge power needs but prioritize sustained ...

[Get Started](#)

### Amazon : Lithium Inverter

Explore versatile lithium battery inverters compatible with solar, vehicles, and more. Find options with USB ports, remote controls, and hardwire capabilities.

[Get Started](#)



### Understanding Battery Capacity and Inverter Compatibility

Aug 20, 2024 · Inverter Efficiency: Lithium batteries generally work well with modern inverters, but checking the inverter's efficiency rating is advisable. Efficiency impacts the actual power ...

[Get Started](#)

## What appliances can I use on a 1000W power ...

Jun 24, 2024 · 3. The time a 12-volt battery runs a 1000-watt power inverter depends on battery capacity, inverter efficiency, depth of discharge, battery ...

[Get Started](#)



## 12 Volt Battery Run Time Calculator

Jan 31, 2025 · Battery Run Time Calculator. This sizes a 12-volt battery while factoring a 50% depth of discharge to prevent excessively discharging the battery.

[Get Started](#)

## What Is the Maximum Inverter for 100Ah ...

May 16, 2022 · Learn how to choose the best power inverter for your 100Ah battery. Understand compatibility, installation, and usage tips for optimal ...

[Get Started](#)



## Can I Use a 48V Battery on a 12V Inverter? How ...

Oct 16, 2022 · A 48V battery can be used on a 12V inverter, but it is not

recommended. The reason for this is because the voltage of the battery will be ...

[Get Started](#)



## How Long Will A 12V Battery Last With an ...

Jun 8, 2024 · This is where the magic of a 12v battery and inverter come in. They can transform your 12v battery, typically found in cars, into a portable power ...

[Get Started](#)



## How Long Will a 12V Battery Last with an Inverter?

Mar 10, 2025 · The runtime of a 12V battery with an inverter depends on various factors, including battery capacity, power load, inverter efficiency, and battery ...

[Get Started](#)

Warranty  
**10 years**

LiFePO<sub>4</sub>

Intelligent BMS

Wide Temp:  
-20°C to 55°C



## Best Inverter For Lithium Ion Battery (2025 ...

Jun 3, 2025 · The URUN 4-Channel Power Inverter is a powerful and reliable power

source designed to provide continuous power with Dewalt 20V Li-ion ...

[Get Started](#)



## Importance of Compatibility Between Inverter ...

Oct 13, 2024 · Inverters that are not designed to work with lithium batteries may overcharge or undercharge the battery, leading to premature degradation. ...

[Get Started](#)

## How Long Will a Battery Last With an Inverter?

Jul 22, 2022 · One of the most common concerns that irritate solar power system owners is the battery running duration. This is very important since it tells you ...

[Get Started](#)



## Understanding the Basics of Connecting Lithium ...

Oct 8, 2024 · Connecting a lithium battery to an inverter is crucial for





converting the stored DC (Direct Current) energy into usable AC (Alternating Current) for ...

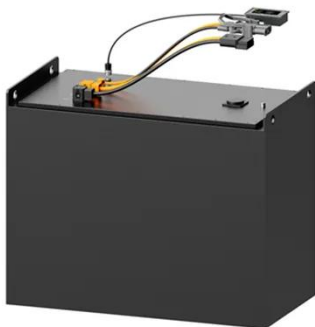
[Get Started](#)

---

## Number of Lithium Batteries to Supply a 5kW ...

Oct 14, 2024 · Step1 - List what will a 5000 watt inverter run Start by listing all the devices you plan to run with the inverter and adding up their power ...

[Get Started](#)



## What Appliances can run on a Power inverter?

4 days ago · A power inverter is a device that takes in direct current (DC) and converts this into alternating current (AC) so it can power AC appliances. ...

[Get Started](#)

---

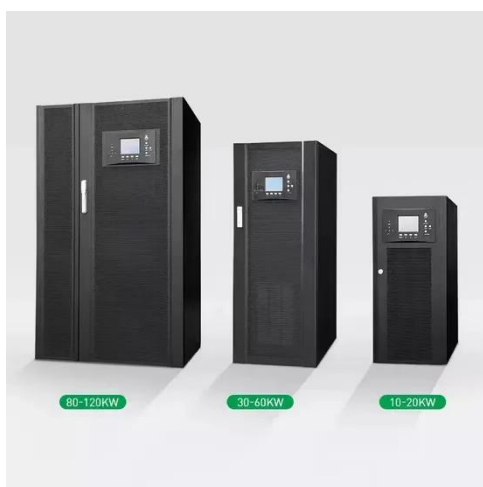
## 12 Volt Battery Inverter: How Long it will Last

Oct 15, 2021 · 12 volt battery inverter circuit diagram The above 12V DC to



220V AC Inverter Circuit diagram uses 2 power IRFZ44 MOSFETs for driving the ...

[Get Started](#)



## Recommended Inverter Cable, Breaker & Fuse ...

Aug 12, 2024 · 1. Selection of inverter fuse and disconnect The function of the disconnect is to disconnect the circuit in case of emergency, in which ...

[Get Started](#)

## Best Inverter For 100Ah Battery (+ Calculations)

Apr 4, 2022 · A 12V 100Ah battery has a 1,200 Wh (Watt-hours) energy storage capacity. It will be able to theoretically power a 100W lightbulb for a maximum ...

[Get Started](#)



## EG4® 6000XP All-In-One Off-Grid Inverter

The EG4 6000XP All-In-One Off-Grid Inverter is a 48V split-phase



inverter/charger, providing powerful and efficient off-grid energy solutions. ...

[Get Started](#)

## Best 12v Battery For Inverter In 2025

1 day ago · With numerous Best 12v Battery For Inverter brands to select from - including big names like NERMAK,YSOLX,Mighty Max Battery,TWING,BELTTT,BESTEK - picking the right ...

[Get Started](#)



## Compatibility of LiFePO4 Batteries and Chargers/Inverters

Sep 23, 2024 · A Battery Management System (BMS) plays a critical role in ensuring compatibility between your LiFePO4 battery and charger/inverter setup. The BMS monitors key parameters ...

[Get Started](#)

## How Inverters Work with Batteries: A Beginner's ...



Mar 4, 2025 · Lithium-ion batteries, commonly used in inverter systems, can degrade significantly after 500 to 2,000 charge cycles, depending on usage ...

[Get Started](#)



## How Many Batteries For a 600W Solar System?

Here is a quick guide on roughly which batteries a 600W solar system can charge. This calculation assumes the system generates 3000 watts with 5 sunlight hours available.

[Get Started](#)

## Find Great Deals on 600w inverter

Jul 17, 2025 · Find Great Deals on 600w inverter , Compare Prices & Shop Online , PriceCheckInverters turn the power from your solar panels into usable electricity. Single-phase ...

[Get Started](#)



## Lithium Batteries: What Size Inverter Can I Use?

Bottom line, if you want to run large inverter loads above 1000w on a lithium

battery, make sure you choose an lithium battery that is designed for larger ...



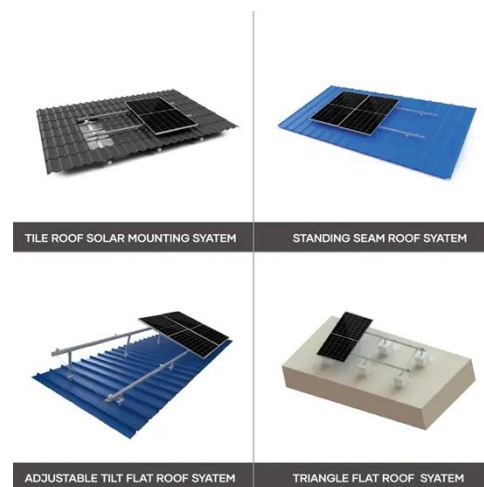
[Get Started](#)

---

## Can I Run a Fridge Off an Inverter?

A 22 cubic feet refrigerator can run off a 2000 watt inverter, and it will also need a 300ah battery and 600W solar panels. A 4AWG or 1/0 AWG wire must be used to minimize energy loss.

[Get Started](#)



---

## How to run a refrigerator on a battery? A step by ...

Feb 26, 2024 · How to run a refrigerator on a battery? To power your fridge with a battery, you'll need the following components: A Battery Bank: This will ...

[Get Started](#)



---

## Can I Connect Inverter to Lithium Battery?

Oct 31, 2024 · Yes, you can connect an inverter to a lithium battery. Lithium

batteries, particularly Lithium Iron Phosphate (LiFePO<sub>4</sub>) batteries, are well-suited for use with inverters due to their

...

[Get Started](#)



---

## Contact Us

For catalog requests, pricing, or partnerships, please visit:  
<https://www.persianasaranda.es>