

SolarInvert Energy Solutions

Can a 16 8v lithium battery be connected to an inverter



Overview

While many inverters can be adapted to work with lithium-ion batteries, it's essential to check the specifications and compatibility of your particular inverter model. Are inverters compatible with lithium batteries?

Understanding the basics of inverters and different battery options sets the stage for exploring the compatibility between inverters and lithium batteries. Lithium batteries have revolutionized the world of inverters, offering a range of advantages that make them an ideal choice for powering these devices.

Which battery should I use for my inverter?

When it comes to powering your inverter, there are a few alternative options to consider aside from lithium batteries. While lithium batteries have gained popularity due to their numerous advantages, they may not be the right choice for everyone. One alternative option is lead-acid batteries.

How many batteries can I connect to my inverter?

There is no set limit to how many batteries you can connect to your inverter. But you must understand how you connect your batteries together affects what you can and can't do! For example, connecting your batteries in series will be different to connecting in parallel.

Can a solar inverter be used with a lithium battery?

Integrating a solar inverter with a lithium battery can take your renewable energy setup to the next level. This combination allows for better energy storage, improved efficiency, and greater resilience during power outages. LiFePO4 batteries are particularly well-suited for solar applications because of their thermal stability and long cycle life.

What is a lithium ion battery for a home inverter?

Lithium-ion batteries offer a more consistent discharge rate, ensuring that your inverter operates smoothly and efficiently. A lithium-ion battery for a

home inverter can significantly enhance your home's energy storage capabilities.

Do inverters and batteries need to match?

The inverter and batteries must match in terms of voltage, capacity, and power output. If you are using a 12V battery, then the input voltage of the inverter must match the battery voltage. If the specifications of the battery and the inverter do not match, the system will not operate stably and may even damage the equipment.

Can a 16 8v lithium battery be connected to an inverter



Can I use an MPPT with 12,8V Lithium-Iron-Phosphate Batteries ...

Oct 16, 2024 · I want to setup a simple Solar PV Offgrid system with the use of Lithium Batteries. All the equipment to be used must be Victron, can I setup my Solar panels, through a ...

[Get Started](#)

Lithium battery with an unsupported Inverter

Sep 26, 2024 · I've tried some suppliers but they all just say this can't be done, then I read some things from guys on this forum. Is it possible to get a li-ion battery with a bms and connect it up ...

[Get Started](#)



- ☒ IP65/IP55 OUTDOOR CABINET
- ☒ OUTDOOR MODULE CABINET
- ☒ OUTDOOR 5G BASE STATION CABINET
- ☒ WATERPROOF

Charge the battery with power charger while inverter is connected

Mar 31, 2022 · Based on your previous reply, I believe it should be possible to continuously charge the battery while simultaneously using the inverter connected to the battery. My ...

[Get Started](#)

How Long Will a Battery Last With an Inverter?

Jul 22, 2022 · One of the most common concerns that irritate solar power system owners is the battery running duration. This is very important since it tells you ...

[Get Started](#)



What Size Inverter Can I Run Off a 100Ah Battery? A ...

Aug 13, 2024 · Understanding Battery and Inverter Basics Battery Capacity and Inverter Compatibility A 100Ah battery signifies its capacity to deliver 100 ampere-hours of current. This ...

[Get Started](#)

Battery connection for inverter

Dec 16, 2024 · Before trying to figure out battery connection for inverter, there is a need to explain the working principles of batteries and inverters. Inverters are ...

[Get Started](#)



Charging LiFePO4 Batteries In Parallel And Series ...

Oct 7, 2023 · In conclusion, you must



have got all the information around lithium batteries and charging lithium phosphate batteries in parallel and series. While ...

[Get Started](#)

How Long Will A 12V Battery Last With an ...

Jun 8, 2024 · This is where the magic of a 12v battery and inverter come in. They can transform your 12v battery, typically found in cars, into a portable power ...

[Get Started](#)



Understanding the Basics of Connecting Lithium ...

Oct 8, 2024 · Connecting a lithium battery to an inverter is crucial for converting the stored DC (Direct Current) energy into usable AC (Alternating Current) for ...

[Get Started](#)

Hybrid Inverter and Lithium Batteries: Setup ...

Compatibility is the first and foremost consideration when setting up

communication between a lithium battery and a hybrid inverter. Not all ...

[Get Started](#)



Can we use a lithium battery for an inverter?

May 29, 2024 · Inverters designed for lead-acid batteries may not have the correct charging profile for lithium batteries, which can damage the battery.

...

[Get Started](#)

Charging Battery While Connected To Inverter ...

Mar 3, 2023 · Can I charge a battery while it's connected to an inverter? in short, the answer is Yes, you can charge a battery while using an inverter. but make ...

[Get Started](#)



DIY Solar Power Forum

Nov 27, 2024 · Check for adequate venting 3. Reduce the load on inverter Disconnect and check the load, make

sure the load well, reconnect it then restart the inverter Turn on the switch ...

[Get Started](#)



Connecting Multiple Batteries to an Inverter: ...

Need more battery capacity on your inverter? Let's look at how to add more batteries and how many batteries you can connect to an inverter.

[Get Started](#)



Connecting Multiple Batteries to an Inverter: ...

When you connect batteries in series to an inverter it essentially means that each battery is connected to the next via both positive and negative terminals. ...

[Get Started](#)



Charging Battery While Connected To Inverter: ...

Power source options How to connect the charging system Following the

outlined method below, you can ensure uninterrupted power by charging your battery ...

[Get Started](#)



Connecting Inverters and Batteries for Maximum Efficiency

Jul 6, 2024 · Connecting an inverter to two parallel batteries, learning how to connect two inverter generators in parallel, and understanding the nuances of connecting two inverters in parallel ...

[Get Started](#)

How many 5.12kWh Sunsynk Batteries can 8KW Sunsynk Inverter ...

Feb 21, 2023 · I recently got a 8KW Sunsynk inverter and soon they will deliver 2 x 5.12kWh Sunsynk Batteries. If I want to get 2 more batteries in the future can the inveter support it or ...

[Get Started](#)



Amazon : Lithium Inverter

Amazon : lithium inverterLivsol (1KW)



1250VA Smart MPPT Inverter with Inbuilt 12.8V/100Ah,1280 Watt Hour Lithium Battery | Wall Mountable Inverter | Sinewave Solar ...

[Get Started](#)

batteries

Dec 22, 2022 · Connect a fully-charged battery to the charger through an ammeter or DVM with sufficient current range, and unplug the charger to simulate a power failure. If there's no back ...



[Get Started](#)



What Size Inverter Can I Run Off a 200Ah Lithium Battery?

6 days ago · You can run an inverter rated between 1500W and 2400W off a 200Ah lithium battery depending on voltage and usage. Typically, a 12V 200Ah battery supports up to about ...

[Get Started](#)

How to Safely Charge a LiFePO4 Battery with an ...

Apr 16, 2025 · Charging a LiFePO4 battery using an alternator can be

effective, but it requires careful consideration of several factors to ensure safety and ...

[Get Started](#)



Can Lithium Batteries Work With Any Type of Inverter?

Jul 21, 2025 · While lithium batteries can't work with every inverter, most modern solar and off-grid inverters now offer lithium compatibility. For optimal performance in home energy stems, ...

[Get Started](#)

Charging A Battery While Using An Inverter: Tips For DIY

...

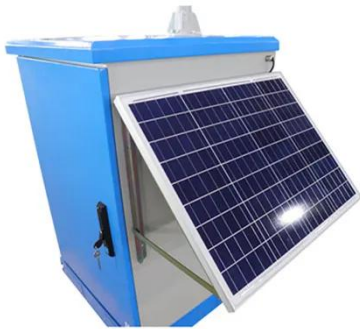
Feb 10, 2025 · Yes, you can charge a battery while using an inverter. The inverter connects the solar panels, battery, and electrical load. This setup allows energy to flow from the solar ...

[Get Started](#)



Can I Connect Inverter to Lithium Battery?

Oct 31, 2024 · Yes, you can connect an



inverter to a lithium battery. Lithium batteries, particularly Lithium Iron Phosphate (LiFePO4) batteries, are well-suited for use with inverters due to their ...

[Get Started](#)

Can I connect an inverter directly to a battery?

Jun 12, 2024 · Yes, you can connect an inverter directly to a battery bank. Once the batteries are connected correctly, simply route the positive and negative wires from the inverter to the ...



[Get Started](#)



48V or 51V battery

Jan 12, 2022 · I see batteries with 48 and with 51V - they are very close only 3 V difference. Which one should I choose? What dictates what voltage to be ...

[Get Started](#)

Inverter Wire Size Calculator

Unsure how to connect your inverter and battery? Check The Inverter Store's handy calculator and guide that breaks

down the complex process for you easily.

[Get Started](#)



How Many Batteries can Be Connected To An Inverter?

An inverter is only as good as the power source. Discover how many batteries you can connect to an inverter and get the most out of it.

[Get Started](#)

Contact Us

For catalog requests, pricing, or partnerships, please visit:
<https://www.persianasaranda.es>