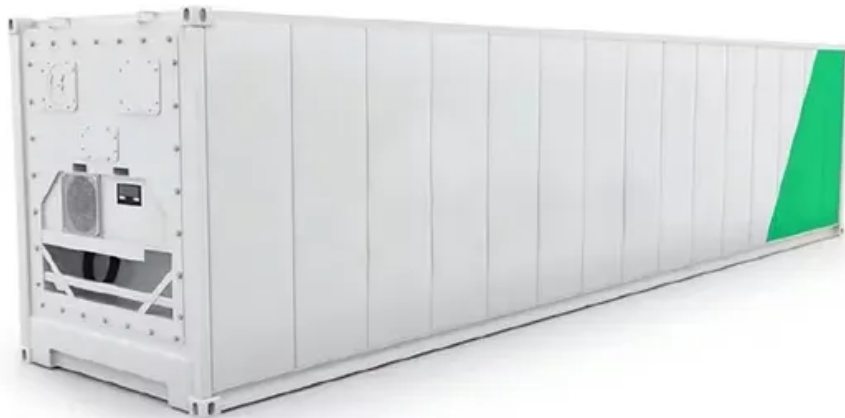


SolarInvert Energy Solutions

Can a DC inverter be used to convert 220V



Overview

Can an inverter convert 12V DC to 220V AC?

Building an inverter circuit that can convert 12V DC power to 220V AC power is a great way to have a portable power source for your electronics when mains power is not available.

What is a DC to AC inverter circuit?

A DC to AC inverter circuit transforms 12V DC input into 220V AC output, enabling you to power standard household devices from battery sources. This comprehensive guide will walk you through the theory, components, design considerations, and step-by-step construction of a reliable 12V to 220V inverter circuit.

How does an inverter IC work?

The inverter circuit works by converting the 12V DC power from a battery or power supply into 220V AC power. The DC to AC inverter IC acts as the heart of the circuit, generating the necessary AC signal. The step-up transformer then steps up the voltage to 220V, while the capacitors and diodes help to smooth out the output waveform.

How a voltage driven inverter circuit works?

Here, a simple voltage driven inverter circuit using power transistors as switching devices is build, which converts 12V DC signal to single phase 220V AC. The basic idea behind every inverter circuit is to produce oscillations using the given DC and apply these oscillations across the primary of the transformer by amplifying the current.

Why do you need an inverter circuit?

Inverters are often needed at places where it is not possible to get AC supply from the Mains. An inverter circuit is used to convert the DC power to AC power. Inverter Circuit are very much helpful to produce high voltage using

low voltage DC supply or Battery. DC-DC Converter circuit can also be used but it has certain voltage limitations.

How to convert 12V to 220V?

$F = 1 / (1.38 * R2 * C1)$ The inverting signals from the oscillator are amplified by the Power MOSFETS T1 and T4. These amplified signals are given to the step-up transformer with its center tap connected to 12V DC. The turns ratio of the transformer must be 1:19 in order to convert 12V to 220V.

Can a DC inverter be used to convert 220V



DC to AC Converter Working and Applications

DC to AC Converter The common inverter technology used in electronics is to convert a voltage source from a battery into an AC signal. Generally, they ...

[Get Started](#)

12v Inverter, 12v DC to 110v/220v AC Power Inverter , inverter...

12V 300-watt power inverter for sale. The modified sine wave inverter delivers 600-watt peak power and converts 12V DC from battery or car lighter to AC 110V or 220V household power. ...



[Get Started](#)



Push-Pull Inverter 12V to 220V

In this project, we design and construct a 12V to 220V push-pull inverter. This circuit is specifically designed to convert 12V DC into 220V DC, making it suitable for powering devices with AC ...

[Get Started](#)

DC 12V to AC inverter: can make a product to dual voltage 110V and 220V

Jan 26, 2020 · For example, this product <https://amzn.to/2RSJmmN> can convert DC 12V to AC 110V, or DC 24V to AC 220V; can I have 2 set of 12V batteries in series to get DC 24V, then ...

[Get Started](#)



How to Build a 12V DC to 220V AC Inverter ...

Whether you want to power your laptop, charge your phone, or run small appliances, this guide will walk you through the process of building a 12V DC ...

[Get Started](#)



48v Inverter, 48v DC to 120v/220v AC Power ...

The inverters convert 48 volt DC power to AC home power, available with 110V/120V or 220V/230V/240V for options. With strong durability and high ...

[Get Started](#)



12v To 220v 2000w Inverter Circuit Diagram

Nov 10, 2017 · The 12V to 220V 2000W Inverter Circuit Diagram is an extremely



versatile device that allows you to convert direct current (DC) of 12 volts to ...

[Get Started](#)

120W Car Power Inverter, DC 12V to AC 220V

120w car inverter, DC 12V to AC 220V, peak power of 300w, aluminum alloy shell, power conversion efficiency up to 90%. The power inverter for car has ...

[Get Started](#)



5v Dc To 220vac Inverter Circuit Diagram

Oct 20, 2020 · At their core, a 5V DC to 220VAC inverter circuit diagram explains how to convert direct current (DC) from a battery, such as those found in cars ...

[Get Started](#)

200W Car Inverter, DC 12V/24V to AC 220V

Car inverters, which convert a vehicle's 12V DC power to 110V or 220V AC

power, can vary in noise level depending on several factors, including their ...

[Get Started](#)



12vdc To 220vac 500w Inverter Circuit Diagram

Sep 16, 2017 · One such example is the 12vdc to 220vac 500w Inverter Circuit Diagram, which can be used to convert a 12-volt DC power source into a 220 ...

[Get Started](#)

What is an inverter? , inverter

Aug 11, 2019 · An inverter or power inverter, refers to an electronic device that converts direct current (DC) into alternating current (AC). In our daily life, we often convert 110V or 220V AC ...

[Get Started](#)



Power Inverter vs. Converter

Jan 26, 2020 · Differences Although both the power inverter and converter are used for voltage conversion, actually

they make different power sources ...

[Get Started](#)



A Complete Guide to Inverters/Variable ...

Jan 1, 2025 · Inverters are components used to control speed or torque control for an electric motor. Inverters take AC mains and rectify it into DC. They are ...

[Get Started](#)



12v To 220v Inverter Circuit Without Transformer

Dec 14, 2019 · This type of inverter is used to convert 12v DC power to 220v AC power without using a transformer. In comparison to traditional transformer-based inverters, a 12v To 220v ...

[Get Started](#)



How does a 12V to 220V Inverter Work?

Jun 11, 2022 · Inverters (sometimes called power inverters) are just a class of

electronic devices called power electronics that convert direct current into alternating current. Scientifically ...

[Get Started](#)



12v Dc To 220v Ac Converter Inverter Circuit Design

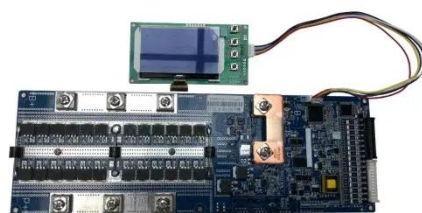
Dec 15, 2019 · Converting a 12-volt DC current into a 220-volt AC current can be a tricky job, but with the right inverter circuit design, it can be done. An inverter is a device that changes the ...

[Get Started](#)

AC appliances: can these be powered with solar energy?

An AC appliance can not directly be powered with DC generated from solar panels. However an inverter can easily convert DC to AC power. Can I use normal 110V / 120V / 220V AC ...

[Get Started](#)



Complete Guide to Building a DC to AC Inverter Circuit: 12V to 220V



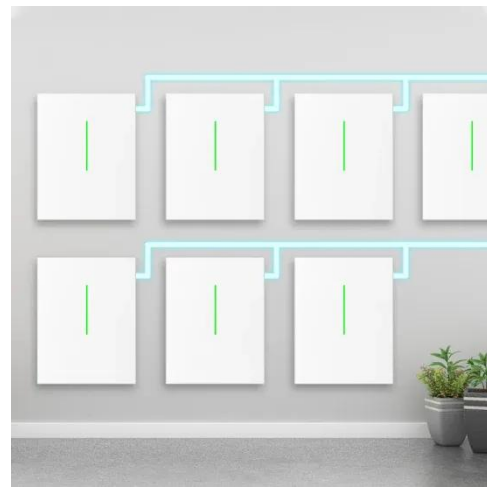
6 days ago · A DC to AC inverter circuit transforms 12V DC input into 220V AC output, enabling you to power standard household devices from battery sources. This comprehensive guide will ...

[Get Started](#)

12v dc to 220v ac inverter,how can we convert it ...

Feb 11, 2008 · For normal use 220V relay can directly be used but for rapid changeover a small circuit can be used with 12V relay taking power from ...

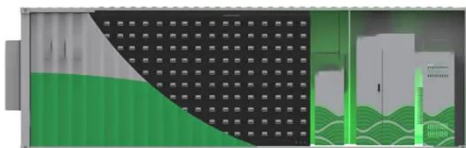
[Get Started](#)



How To Make 12v DC To 220v AC Converter

Apr 1, 2022 · The circuit works by using an astable multivibrator circuit to generate a 50Hz square wave oscillation from the DC input. This oscillating ...

[Get Started](#)

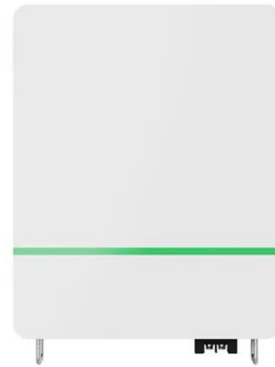


DC to AC Converter:Principle and Applications

Jul 4, 2024 · An inverter (converter) is frequently necessary in circuits where

DC to AC conversion is not otherwise possible. Therefore, an inverter circuit is ...

[Get Started](#)



inverter circuit english

May 4, 2021 · To design a 100 watt Inverter read Simple 100 Watt inverter 12v DC to 220v AC Converter Circuit Using Astable Multivibrator Inverter circuits can either use thyristors as ...

[Get Started](#)



DC-to-AC Converters (Inverters): Design, ...

May 20, 2023 · The electrical circuits that transform Direct current (DC) input into Alternating current (AC) output are known as DC-to-AC Converters or ...

[Get Started](#)

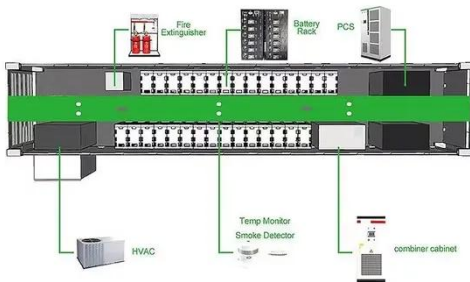


How to Make Inverter 12V to 220V

May 27, 2025 · An inverter converts DC power derived from a power usually 12V

into AC power at 220V. This means the battery can be used to operate ...

[Get Started](#)



12V DC to 220V AC Inverter Circuit & PCB

Feb 2, 2025 · Inverter Circuit are very much helpful to produce high voltage using low voltage DC supply or Battery. DC-DC Converter circuit can also be used ...



[Get Started](#)



A Circuit Diagram for Converting 12v to 220v: ...

An inverter circuit is used to convert DC (direct current) power from a 12V battery into AC (alternating current) power at 220V. This allows you to use household ...

[Get Started](#)

12 Volt to 220 Volt Inverter

Nov 21, 2022 · When an engineer requires to convert DC into AC power, there are several ways to make an

inverter. So, we thought why not try making an inverter using a battery of 12 Volts? ...

[Get Started](#)



Inverter Circuit

Jun 5, 2016 · Here, a simple voltage driven inverter circuit using power transistors as switching devices is build, which converts 12V DC signal to single phase ...

[Get Started](#)

5000 Watt Voltage Converter, 110/120v to ...

Good quality 5000w voltage converter built in step up & step down transformer, convert 120v to 240v (vice versa), suitable use for dryer, TV, computer, ...

[Get Started](#)



dineth99-bit/DC-to-AC-converter-design-with-M...

A 12 V DC to 220 V AC converter, also known as an inverter, is an electronic

device that converts direct current (DC) power from a battery or other power ...

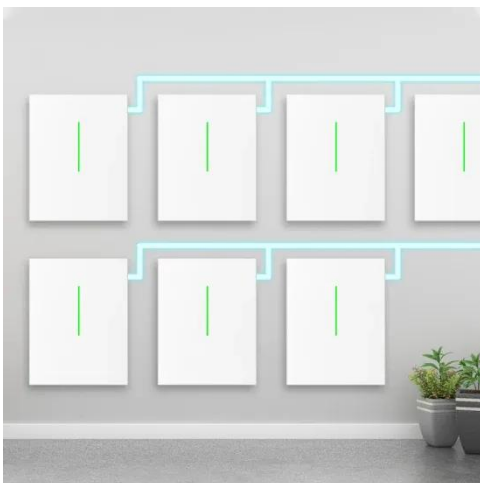
[Get Started](#)



How to Link Two Inverters Together to Get 220V AC

Aug 19, 2025 · Most power inverters are designed to convert 12-volt, 24-volt, or 48-volt DC to 120-volt AC. These inverters are commonly used in recreation vehicles and solar power systems. ...

[Get Started](#)



60W Car Power Inverter, DC 12V/24V to AC ...

Car power inverters convert the car battery's 12V, 24V, or 48V DC into a stable 220V AC supply, suitable for laptops and other household appliances. Using a ...

[Get Started](#)

12V DC to 220V AC Inverter Circuit

Aug 13, 2013 · This is a quite simple DC

to AC inverter that provides 220VAC when a 12VDC power source is provided. It can be used to power very light loads like night lamps and ...

[Get Started](#)



12.8V 100Ah



1000W Car Inverter, DC 12V to AC 110V/220V

The positive and negative terminals of the 1000w car inverter 12v 220v are one of its important components. The positive and negative terminals of the car ...

[Get Started](#)

Contact Us

For catalog requests, pricing, or partnerships, please visit:
<https://www.persianasaranda.es>