

SolarInvert Energy Solutions

Can photovoltaic inverters still be used during a power outage



Overview

Most homeowners with solar on their homes have what is called a “grid-tied” solar system, which means the panels are connected to an inverter. The inverter is connected to the main AC panel in the house and to a special smart electric meter that records both energy you use from the.

If you want to keep your home up and running when the power goes out, there are a few ways to do so: 1. Use a backup gas generator 2. Add.

The reliability and lifespan of solar panels is excellent, according to a recent study by NREL. The researchers looked at 54,500 panels installed.

People who want to get off fossil fuels completely and ensure that only clean energy passes through their wires might be tempted to go off-grid completely. And that certainly is an option, but it can be a very costly one. Though going solar has never been less.

Since solar panels depend on the sun they won't be much good at night and will produce less energy depending on the season. Luckily.

However, most standard grid-tied inverters shut down during a power outage due to safety regulations, which means your solar panels won't power your home when the grid is down. Does a solar inverter work during a power outage?

To ensure your solar inverter functions during a power outage, consider installing a hybrid solar inverter that is designed to work with battery storage. This type of inverter automatically switches to battery power when the grid goes down, allowing you to keep essential appliances running.

How do I keep my solar power inverter running during an outage?

To keep your solar power inverter running during an outage, having battery storage is essential. If you only have a grid-tied system, your inverter will shut down when the grid goes down to protect utility workers from potential hazards. In this situation, you won't have access to any solar energy being produced.

Do solar panels provide electricity during a power outage?

Solar panels alone do not provide electricity during a power outage unless connected to a battery backup system. Grid-tied systems shut down when the grid goes down, but solar batteries store excess energy for use when needed. This ensures continuous power even when the grid is offline.

Can a solar inverter keep your power on in a blackout?

To keep your power on in a blackout, you need a solar inverter that can remove your home from the grid, along with a generator or battery for longer-term energy needs. By creating your own little “island” of a home with solar panels and batteries, you can run essential appliances for days during a power outage.

Why do inverters shut down during a power outage?

Safety Protocols: As mentioned, inverters shut down during outages to prevent back-feeding. This ensures that electricity doesn't flow back into the grid, which could be dangerous for those repairing it. **Battery Storage Systems:** To harness solar power during an outage, one needs a battery storage system.

What happens if a solar inverter goes out?

In the event of a power outage, these inverters can automatically switch to using stored energy from the batteries while also allowing solar panels to generate electricity during the day. This seamless transition ensures that you can continue to draw power from your system, keeping essential appliances running.

Can photovoltaic inverters still be used during a power outage



Can photovoltaic inverters still be used during a power ...

Oct 19, 2024 · Solar panels can be used during a power outage if they're connected to a battery storage system or have a special inverter, enabling them to generate an off-grid power

[Get Started](#)

Do Grid-Tied Solar Panel Systems Work In a ...

Solar panels will continue to capture sunlight and generate DC electricity using the photovoltaic effect during a blackout. However, grid-tied solar power ...

[Get Started](#)



Inverters that allow use of power when provider is down?

Jan 13, 2023 · The SMA TL series inverters allow the homeowner to close a switch during grid failure, to energize a separate circuit with a limited amount of power, while the photovoltaic ...

[Get Started](#)



Will Solar Panels Work During a Power Outage?

Apr 25, 2024 · These systems add batteries to your grid-connected solar setup. During the day, your panels generate electricity used in your home and can ...

[Get Started](#)



2MW / 5MWh
Customizable



A Must-Have Guide on How to Use Solar Panels During Power Outage

Jun 15, 2023 · To use solar panels during a power outage, you first need to ensure they are connected correctly. Solar panels should be properly connected to a charge controller, which ...

[Get Started](#)

Do Solar Panels Work In A Power Cut? (UK)

Jul 26, 2024 · How To Make Sure You Can Use Your Solar Panels In A Power Cut
Currently, the only way to ensure continuous power during a grid outage ...

[Get Started](#)



Solar Panels During Power Outage: Do They Still ...

Aug 19, 2024 · Solar panels continue to

- ✓ LIQUID/AIR COOLING
- ✓ INTELLIGENT INTEGRATION
- ✓ PROTECTION IP54/IP55
- ✓ BATTERY /6000 CYCLES



generate electricity during power outages, because they continue to absorb sunlight. However, in most ...

[Get Started](#)

Can You Use A Generator With Solar Panels? We ...

Key Takeaways Solar panels and generators can be used together to provide backup power during outages or periods of low sunlight. It's important to ...

[Get Started](#)



Can Your Solar Power Inverter Work in a Power ...

During a power outage, hybrid inverters can draw power from the solar panels and any connected battery systems to supply electricity to your home, making ...

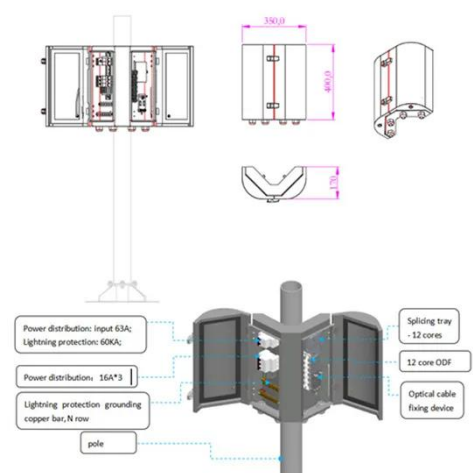
[Get Started](#)



Best practices for using your IQ Batteries during a grid outage

During a grid outage, an Enphase Energy System with IQ Batteries can help keep your home powered. Read through to learn how to prepare for an outage, monitor your system during an ...

[Get Started](#)



How to Use Solar Panels During Power Outage - ...

May 26, 2025 · However, most standard grid-tied inverters shut down during a power outage due to safety regulations, which means your solar panels won't ...

[Get Started](#)

Will Solar Panels Work During a Power Outage?

Mar 25, 2025 · What is a Grid-Tied Solar System? Live inverter readings from a SunPower system during daytime production. Grid-tied inverters like this ...

[Get Started](#)



Power Your Home With Solar In A Blackout - ...

4 days ago · You can partially power your home with a grid-connected solar



panel system during a blackout without a battery. Here's how it can be done. One of ...

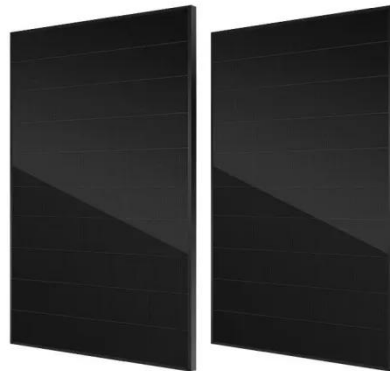
[Get Started](#)

Why Do Solar Systems Need to Shut Down in a Power Outage

...

Aug 19, 2025 · Continued Operation: The solar panels can continue to generate power and recharge the batteries during the day, ensuring a continuous power supply even during ...

[Get Started](#)



How To Use Solar Panels During Power Outage

Jul 27, 2023 · When traditional grid power fails due to storms or other issues, solar panels, along with battery energy storage and inverters, continue to ...

[Get Started](#)



Do solar panels work during a power outage?

Dec 6, 2023 · Most rooftop solar arrays

won't work when the grid is down. But backup batteries and some inverters offer a workaround.

[Get Started](#)



Solar batteries: What you need to know about ...

How to know what level of backup power you need While most multimode batteries provide can provide some standalone back-up power, the amount of ...

[Get Started](#)

Solar Islanding and Anti-Islanding Protection ...

Jun 15, 2024 · Electric Shocks or Burns: Utility workers believe the lines are dead, but your panels are still sending power. Damage to Solar Equipment: The ...

[Get Started](#)



What Happens if You Have Solar and the Power ...

Nov 5, 2023 · Standard grid-tied inverters automatically shut down during



a power outage due to safety requirements set by the National Electrical Code (NEC). ...

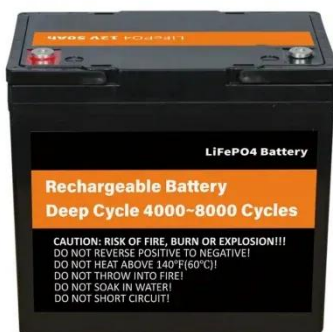
[Get Started](#)

Do solar panels work during a power outage?

Apr 10, 2025 · Key takeaways: Standard solar panels shut down during outages to prevent backfeeding electricity for safety reasons. Solar systems with battery storage can continue ...



[Get Started](#)



Getting Power From Solar Equipment When the ...

Aug 8, 2013 · One of the biggest complaints I hear about most solar-electric (photovoltaic or PV) systems is that when the grid goes down you can't use ...

[Get Started](#)

Use panel power in blackout

Nov 27, 2024 · masterone2988 writes
But during the day, if the grid power goes off, why is it that the panels cannot

still be supplying power of some sort, directly to you, as it is generated? ...

[Get Started](#)



SolarEdge Daytime Solar Options during power outage?

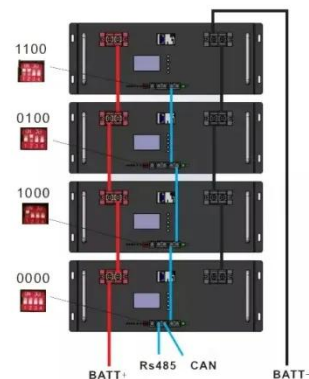
Jan 5, 2023 · I was told multiple times that the technology isn't there yet and that there are micro-inverters that store very little power and wouldn't be enough for anything. During the final ...

[Get Started](#)

Do solar panels work during a power outage?

Dec 6, 2023 · When the electrical grid goes down, most solar panels connected to that grid turn off, too--unless they're connected to a specialized inverter or a ...

[Get Started](#)



Will My Solar Still Work During a Power Outage?

One common question we receive as Queensland's most trusted solar installer



is, "Will my solar still work during a power outage? Will I lose power like my ...

[Get Started](#)

Can You Use Solar in a Power Outage?

Jun 13, 2023 · You can only use solar in a power outage if you have a backup circuit or blackout mode because it needs to disconnect from the grid.

[Get Started](#)



How To Use Solar Panels During a Power Outage ...

Power cuts in the UK affect millions of homes yearly. While solar panels, also called photovoltaics, generate electricity, most grid-tied systems shut down ...

[Get Started](#)

Solar Panels and Power Outages: A ...

Sep 22, 2023 · Contrary to popular belief, a standard solar panel system will

not provide power during an outage unless it has specific equipment designed for ...

[Get Started](#)



Power Outages



Why Does the Inverter Shut Down During Outages? This shutdown feature is called "anti-islanding." The term "islanding" refers to the situation where, even though there's a power ...

[Get Started](#)

Solar Panels and Power Outages: A ...

Sep 22, 2023 · During power outages, most standard inverters shut down to prevent back-feeding electricity into the grid. This is a safety measure to ...

[Get Started](#)



During a grid outage, will my Enphase Energy System ...

If your Enphase Energy System has an IQ Battery and an IQ System Controller,



your home will automatically switch to backup power from the solar panels or the battery when a grid outage ...

[Get Started](#)

Power Outages

In Summary: Your inverter's shutdown during power outages isn't a flaw; it's a safety feature mandated by codes like the NEC to protect workers and maintain grid stability. For continuous ...

[Get Started](#)



Contact Us

For catalog requests, pricing, or partnerships, please visit:
<https://www.persianasaranda.es>