

SolarInvert Energy Solutions

Do base stations need wind power

PUSUNG-R (Fit for 19 inch cabinet)



Overview

Are base-load power stations necessary?

The assumptions that base-load power stations are necessary to supply base-load demand and to provide a reliable supply of grid electricity have been disproven by both practical experience in electricity grids with high contributions from renewable energy and by hourly computer simulations.

Can a power station supply base-load demand?

The old myth was based on the incorrect assumption that base-load demand can only be supplied by base-load power stations; for example, coal in Australia and nuclear in France. However, the mix of renewable energy technologies in our computer model, which has no base-load power stations, easily supplies base-load demand.

Do wind-based power stations reduce energy imports?

More specifically, the operation of wind-based power stations first of all reduces the energy imports (oil, natural gas, coal, etc.) for almost all energy-importing industrialized countries contributing to annual exchange loss reduction.

Why do wind energy systems produce the lowest environmental impacts?

When wind energy systems are installed on agricultural land, they produce the lowest environmental impacts rather than other renewable energy sources because they require less land area for each kilowatt-hour (kWh) of electricity energy production compared to any other energy transformation process.

How can variable wind and solar PV be balanced?

Firstly, the fluctuations in variable wind and solar PV are balanced by flexible renewable energy sources that are dispatchable, i.e. can supply power on demand. These are hydro with dams, biofuelled open-cycle gas turbines and concentrated solar thermal power (CST) with thermal storage, as illustrated in

Figure 2.

How much embodied energy does a wind turbine need?

What is documented however [31, 96–99] is that wind turbines require primary life-cycle embodied energy amounts in the order of only 1–3 MWh kW⁻¹ (that usually implies energy payback periods of months), with the stage of manufacturing being the most demanding.

Do base stations need wind power



Renewable energy sources for power supply of base ...

Sep 8, 2022 · Since base stations are major consumers of cellular networks energy with significant contribution to operational expenditures, powering base stations sites using the ...

[Get Started](#)

National Wind Watch , The Grid and Industrial Wind Power

Most of it, however, is sent to Norway and Sweden, where it is used by pumped hydro stations. Do the Danish people support wind power? Many of the wind power facilities in Denmark are ...



[Get Started](#)



Offshore substations' role in wind energy

Jan 10, 2025 · A key advantage of floating offshore substations is that they eliminate the need for seabed foundations, reducing both installation costs ...

[Get Started](#)

The Inner Workings of Steam Base Stations: A ...

Mar 13, 2025 · How do steam base stations compare to other tracking technologies? Steam base stations use a laser-based tracking technology known as "lighthouse" tracking, which is ...

[Get Started](#)



How Many Base Stations Do I Need for a Full Body? Explained

Sep 6, 2024 · But how many base stations are actually necessary to create a full-body tracking system? This article aims to explain the factors to consider when determining the ideal number ...

[Get Started](#)

How does onshore wind power work?

The basics of electromagnetism and its use in onshore wind We can create electrical energy by rotating magnets inside a coil of conductive wire. We just ...

[Get Started](#)



What Is the Future of Wind Energy?

5 days ago · That would require new

materials and devices that could convert energy from a tree's complex movements into the steady rotation that

...

[Get Started](#)



Microsoft Word

Jul 30, 2013 · Overseas, some base-load power stations are nuclear. They produce little pollution during normal operation, but much pollution (including carbon dioxide emissions) from mining,

...

[Get Started](#)



DO WE NEED BASE-LOAD POWER STATIONS?

Jan 30, 2016 · The assumptions that base-load power stations are necessary to supply base-load demand and to provide a reliable supply of grid electricity have been disproven by both

...

[Get Started](#)

Baseload power stations not needed for secure renewable

...

Dec 4, 2024 · An energy system dominated by solar and wind energy does not require baseload power stations to guarantee supply security, German research academies have said.

[Get Started](#)



? Are base load power plants necessary when it ...

Dec 11, 2024 · However, offshore wind power plants are considered to be almost capable of base load due to their high full load hours. The so -called "dark ...

[Get Started](#)



Wind power , Description, Renewable Energy, ...

Jul 17, 2025 · Wind power is a form of energy conversion in which turbines convert the kinetic energy of wind into mechanical or electrical energy that can ...

[Get Started](#)



How to make wind solar hybrid systems for ...

The wind power generation system can be operated at night or on rainy days,

making up for solar power generation limitations. Take a certain ...

[Get Started](#)



baseload power

Dec 13, 2024 · Baseload power plants are not necessary to maintain supply in an energy system dominated by wind and solar power, and only have a place in future systems if they help cut ...

[Get Started](#)



Baseload power is a myth: even intermittent ...

Apr 10, 2013 · Our latest research, available here and reported here, finds that generating systems comprising a mix of different commercially available ...

[Get Started](#)

Why Telecom Base Stations?

Feb 7, 2021 · Powering Off-Grid Telecommunication Base Stations using Innovative Diesel Generator Technology

with Solar and Wind Power Key Features
nt speed diesel generators ...

[Get Started](#)



Analysis of the Use of Wind Energy to Supplement ...

Sep 19, 2013 · Wind speed data collected at An increased use of wind power could be Economic impact of the installation of locations around McMurdo Station, considered in further analysis.

[Get Started](#)

Renewable energy - Australian Antarctic Program

Transporting fuel and oil to Antarctica is a costly and sometimes risky exercise. Before the introduction of renewable energy systems, Australian stations required 2.1 megalitres of diesel ...

[Get Started](#)



How Do Wind Turbines Work?

2 days ago · Wind turbines work on a simple principle: instead of using electricity to make wind--like a fan--wind

turbines use wind to make electricity.
Wind ...

[Get Started](#)



Wind power: your questions answered

May 4, 2020 · Friends of the Earth supports the development of wind power in the UK. We must invest in renewable energy like wind power to offset the threat of climate change and to help ...

[Get Started](#)



Wind Energy , Everything You Need to Know

Nov 4, 2020 · Wind farms are also known as wind parks, wind power stations, or wind power plants. Where is the world's biggest wind farm? The Gansu Wind ...

[Get Started](#)



The Wind Power

The Wind Power is a comprehensive database of detailed raw statistics on the rapidly growing sphere of wind energy

and its supporting markets. It contains data about wind farms, turbines, ...

[Get Started](#)



Baseload power is a myth: even intermittent ...

Apr 10, 2013 · However, the mix of renewable energy technologies in our computer model, which has no base-load power stations, easily supplies base ...

[Get Started](#)

Wind Power Station

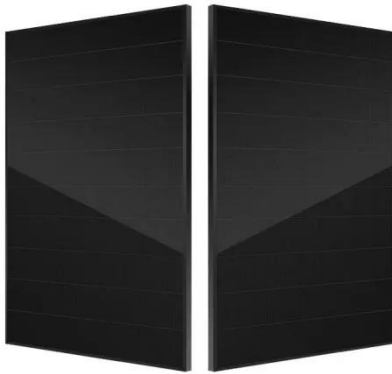
Wind power stations are facilities that generate electricity by harnessing wind energy through the use of wind turbines, as evidenced by the increasing capacity of such stations in various ...

[Get Started](#)



What Are Base Station Antennas? Complete Guide

Nov 20, 2024 · In modern telecommunications systems, the base



station antenna stands out as an undeniable and crucial component to facilitate our daily ...

[Get Started](#)

National Wind Watch , The Grid and Industrial Wind Power

Wind power has no effect on base load. However, since base load providers can not be ramped down, if wind turbines produce power when there is no or little peak load, the extra electricity ...



[Get Started](#)



The Base Load Fallacy

Mar 5, 2014 · Base-load alternatives to coal power can be provided by efficient energy use, bioenergy, wind power, solar thermal electricity with thermal storage, geothermal and gas. ...

[Get Started](#)

New Research Challenges Need for Baseload Power Plants

Dec 16, 2024 · In a new report, researchers from the German Academy

of Science and Engineering (acatech) show that energy systems dominated by wind and solar can deliver low ...

[Get Started](#)



Did You Know? Wind Turbines Are Powering Antarctica's Research Stations

Apr 23, 2025 · In the heart of Antarctica, on Ross Island's Crater Hill, stands the world's southernmost wind farm--a testament to human ingenuity and commitment to sustainability. ...

[Get Started](#)

Wind Power Plants

Aug 18, 2025 · The wind power plants are on the drag principle (historic windmills) or the lift principle (modern turbines). A horizontal or vertical axis is ...

[Get Started](#)



Wind Energy , Department of Energy

3 days ago · Wind power is the nation's



largest source of renewable energy, with more than 150 gigawatts of wind energy installed across 42 U.S. States and ...

[Get Started](#)

Contact Us

For catalog requests, pricing, or partnerships, please visit:
<https://www.persianasaranda.es>