

## SolarInvert Energy Solutions

**Does the lithium iron phosphate battery have a cylindrical shape**



## Overview

---

What are the different types of lithium phosphate batteries?

1. Cylindrical LiFePO<sub>4</sub> Cells Cylindrical LiFePO<sub>4</sub> cells are the most commonly used type of lithium iron phosphate batteries. They resemble the shape of traditional AA or AAA batteries and are widely employed in applications where high power and durability are essential.

What are lithium iron phosphate (LiFePO<sub>4</sub>) batteries?

Lithium iron phosphate (LiFePO<sub>4</sub>) batteries are known for their high safety, long cycle life, and excellent thermal stability. They come in three main cell types: cylindrical, prismatic, and pouch. Each of these types has distinct characteristics that make them suitable for various applications.

What is a cylindrical lithium ion battery?

Cylindrical cells one of the most widely used lithium ion battery shapes due to ease to use and good mechanical stability. The tubular cylindrical shape can withstand high internal pressures without collapsing. Melasta produces multiple sizes and capacities according to the customer requirement.

Why should you choose a cylindrical LiFePO<sub>4</sub> battery?

High Safety: Compared to other lithium-ion batteries, cylindrical LiFePO<sub>4</sub> cells are less prone to overheating or catching fire. Low Maintenance: They require minimal upkeep and do not need balancing or calibration. Cylindrical LiFePO<sub>4</sub> cells are versatile and can be found in: Voltage: Ensure compatibility with your device's voltage requirements.

What is a cylindrical battery?

Cylindrical cells, known for their high energy density and thermal management efficiency, have been the backbone of lithium battery technology, especially in consumer electronics and electric vehicles. These cells are characterized by their smaller, cylindrical shape.

What is a LiFePO4 battery?

LiFePO4 batteries are a specific type of lithium-ion battery characterized by their use of lithium iron phosphate as the cathode material. This choice of material contributes to several advantageous properties: Safety: One of the most notable features of LiFePO4 batteries is their inherent thermal stability.

## Does the lithium iron phosphate battery have a cylindrical shape

---

### Lithium Ion Cell Sizes: Types, Standards



Aug 15, 2024 · Lithium-ion cell sizes affect battery performance. This guide covers various sizes, their uses, and key factors for choosing the right battery.

[Get Started](#)

### Cylindrical lithium battery classification and ...

May 17, 2023 · Cylindrical lithium batteries are divided into different systems of lithium iron phosphate, lithium cobaltate, lithium manganese, cobalt-manganese ...



[Get Started](#)

### Cylindrical lithium ion battery - types, ...

Aug 4, 2023 · This article provides an overall introduction of cylindrical lithium ion battery, about its different types and different sizes, also the pros and cons.



[Get Started](#)

## Prismatic Cells Explained: Benefits in Battery ...

Apr 29, 2024 · What Advantages Do Prismatic Cells Offer in Terms of Manufacturing? How Does the Chemistry of Lithium-Iron Phosphate Benefit ...

[Get Started](#)



## [LiFePO4 Battery Types] Cylindrical vs. Prismatic ...

Oct 22, 2024 · LiFePO4 batteries are a specific type of lithium-ion battery characterized by their use of lithium iron phosphate as the cathode material. ...

[Get Started](#)

## Types Of Lithium Lifepo4 Battery Cell

Within the LiFePO4 family, there are three primary types of battery cells: Cylindrical lithium phosphate cells are characterized by their tubular shape, resembling traditional AA or AAA ...

[Get Started](#)



## Types of LiFePO4 Batteries: Shapes, Current ...

Apr 18, 2025 · Learn about the various types of LiFePO4 batteries, including

cylinder, prismatic, and pouch cells, along with their applications and current ...



[Get Started](#)

## Understanding the Differences Between ...

Mar 18, 2025 · Compare prismatic, pouch, and cylindrical lithium battery cells. Learn how design, energy density, and durability affect performance and ...

[Get Started](#)



## Parametric Analysis of the Thermal Management of a Lithium Iron

Apr 26, 2025 · The present study analyzed the thermal management of a lithium iron phosphate (LiFePO4) battery using phase change material for effective operational temperature control.

[Get Started](#)

## Su-vastika : The future of home energy storage

Sep 2, 2023 · A LiFePO4 cylindrical cell is a type of lithium iron phosphate (LiFePO4) battery that has a cylindrical shape. Cylindrical cells are the most common type of LiFePO4 cell and are ...

[Get Started](#)



## Understanding the Structure and Function of Lithium Iron Phosphate

Nov 12, 2024 · The cathode of the battery is made of lithium iron phosphate, which is a crystalline structure composed of lithium, iron, phosphorous, and oxygen atoms. This material is known ...

[Get Started](#)

## The Shape and Safety Performance of Lifepo4 ...

May 23, 2024 · Lithium iron phosphate, this seemingly boring chemical term, plays a pivotal role in the field of new energy. As a battery material, it has ...

[Get Started](#)



## Prismatic Cells vs. Cylindrical Cells: What is the ...





Apr 25, 2022 · There are three main types of lithium-ion batteries: cylindrical cells, prismatic cells, and pouch cells. In the EV industry, the most promising ...

[Get Started](#)

## Understanding LiFePO4 Prismatic Cells: A Comprehensive Guide-Lithium

Mar 19, 2025 · In the rapidly evolving world of battery technology, LiFePO4 (Lithium Iron Phosphate) batteries have emerged as a popular choice due to their safety, longevity, and ...



[Get Started](#)



## LiFe-Shenzhen Melasta Battery Co., Ltd

Jul 4, 2023 · Cylindrical cells one of the most widely used lithium ion battery shapes due to ease to use and good mechanical stability. The tubular ...

[Get Started](#)

## What are the different types of LiFePO4 Battery?

Apr 12, 2022 · LiFePO4 Battery can be



different from shape, current grades, and functions. This post will help you to understand the different types more easily!

[Get Started](#)



## Meaning of Codes on Lithium Batteries

LFP: Stands for lithium iron phosphate ( $\text{LiFePO}_4$ ), indicating that the battery is a lithium iron phosphate battery. ICR: Refers to lithium cobalt oxide ( $\text{LiCoO}_2$ ) chemistry, used in some ...

[Get Started](#)

## 7 Types of Lithium-Ion Batteries: Comparison

Jan 18, 2024 · Types of lithium-ion batteries are primarily categorized by their cathode materials, which determine their performance, safety, and ...

[Get Started](#)



## Lithium Batteries

Oct 13, 2023 · Lithium Ion Phosphate - Cylindrical Lithium iron phosphate battery ( $\text{LiFePO}_4$  battery) can last



significantly longer than standard lithium-ion variety. These batteries are also ...

[Get Started](#)

---

## Rechargeable lithium iron phosphate battery ...

CMX offers two types of LiFePO<sub>4</sub> battery cells - Cylindrical and Prismatic Cells. Both provide reliable and sustained power for custom battery pack ...

[Get Started](#)



---

## What Are LiFePO<sub>4</sub> Prismatic Cells? Which One Is ...

What Are LFP Prismatic Cells? LiFePO<sub>4</sub> prismatic cells is a battery that encapsulates lithium iron phosphate in a Prismatic shell. The electrode tablets ...

[Get Started](#)

---

## Types Of Lithium Lifepo<sub>4</sub> Battery Cell

Cylindrical lithium phosphate cells are characterized by their tubular shape,

resembling traditional AA or AAA batteries. They are known for their robust structure, which makes them a good ...

[Get Started](#)



## What Is A Soft Pack Lithium Iron Phosphate ...

Nevertheless, with the recent market developments, the demand for soft pack LiFePO<sub>4</sub> batteries is growing, and their application areas continue to expand. ...

[Get Started](#)

## Lithium-iron Phosphate (LFP) Batteries: A to Z ...

Mar 28, 2023 · Lithium-ion batteries have become the go-to energy storage solution for electric vehicles and renewable energy systems due to their high ...

[Get Started](#)



## Understanding LiFePO<sub>4</sub> Battery Terms: A ...

Apr 18, 2025 · The LiFePO<sub>4</sub> (Lithium Iron Phosphate) battery has gained

significant popularity over the past few years, especially since around 2018. ...

[Get Started](#)



## LiFePO4 Prismatic Cells: Advantages, ...

Jun 8, 2023 · What is a lifepo4 prismatic cell? A LiFePO4 prismatic cell is a type of lithium-ion battery that uses lithium iron phosphate as its cathode material. ...

[Get Started](#)



## Prismatic vs Cylindrical LiFePO4 Cells in ESS

Feb 15, 2024 · The construction of LiFePO4 for ESS applications is a significant shift from cylindrical to prismatic cell integration. This transition is driven by the ...

[Get Started](#)



## What is the difference between cylindrical and ...

Nov 16, 2023 · What are cylindrical and prismatic lifepo4 batteries? Cylindrical

lithium iron phosphate battery is a battery with a cylindrical appearance. The ...

[Get Started](#)



- ✓ IP65/IP55 OUTDOOR CABINET
- ✓ OUTDOOR MODULE CABINET
- ✓ OUTDOOR 5G BASE STATION CABINET
- ✓ WATERPROOF

## Types of LiFePO4 Battery Cells: Cylindrical, ...

Jan 15, 2025 · Lithium iron phosphate (LiFePO4) batteries are known for their high safety, long cycle life, and excellent thermal stability. They come in three ...

[Get Started](#)

## Prismatic vs Cylindrical Battery Cells: What's the ...

Prismatic and cylindrical are the two most common lithium-ion battery cell shapes used today. While both have distinct advantages and disadvantages for ...

[Get Started](#)



## Cylindrical vs Prismatic LiFePO4 Battery Cells

Jul 16, 2024 · Lithium Iron Phosphate (LiFePO4) batteries are increasingly



popular across various industries, from electric vehicles to renewable energy ...

[Get Started](#)

---

## What is a Lithium-Ion Battery and How Does it ...

Apr 8, 2025 · Discover lithium-ion battery types, cell formats, safety advancements, performance improvements, and expert insights on future ...

[Get Started](#)



## A Complete Guide: What Is A LiFePO4 Battery?

Feb 23, 2024 · LiFePO4 refers to the positive electrode used for the lithium iron phosphate material, and the negative electrode is used to do the graphite.

[Get Started](#)

---

## Prismatic vs Cylindrical LiFePO4 Cells in ESS

Date Published: February 15, 2024  
LiFePO4 Cell Theory, Prismatic vs

Cylindrical Cells Lithium Iron Phosphate (LiFePO<sub>4</sub>) batteries have become increasingly ...

[Get Started](#)



## Lithium Battery Configurations and Types of Lithium Cells

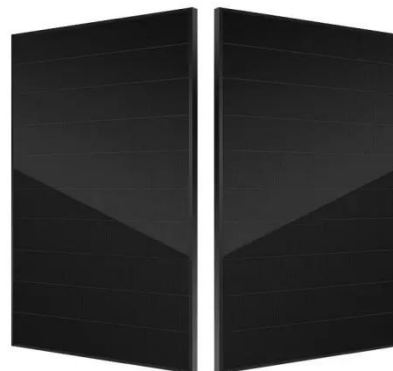
Sep 18, 2024 · There are three types of cells that are used in lithium batteries: cylindrical, prismatic, and pouch cells. For the purpose of this blog, all cells are lithium iron phosphate ...

[Get Started](#)

## What Is A Soft Pack Lithium Iron Phosphate ...

Dec 16, 2022 · A soft pack lithium iron phosphate (short for: LiFePO<sub>4</sub>/ LFP/ LiFe) battery refers to a lithium-ion battery with lithium iron phosphate as the ...

[Get Started](#)



## Contact Us

For catalog requests, pricing, or partnerships, please visit:



<https://www.persianasaranda.es>