

## SolarInvert Energy Solutions

# How big a battery should I use for a 2 kW inverter



## Overview

---

Note! The battery size will be based on running your inverter at its full capacity  
Assumptions 1. Modified sine wave inverter efficiency: 85% 2. Pure sine wave inverter efficiency: 90% 3. Lithium Battery: 100%.

What is the calculate battery size for inverter calculator?

The Calculate Battery Size for Inverter Calculator helps you determine the optimal battery capacity needed to support your inverter system. By inputting critical parameters such as power consumption, inverter efficiency, and desired usage time, this calculator provides a precise battery size recommendation tailored to your specific needs.

What is the recommended battery size for an inverter?

Interpreting Results: Once you input the required data, the calculator will generate the recommended battery size in ampere-hours (Ah). For instance, if your power consumption is 500 watts, the usage time is 4 hours, and the inverter efficiency is 90%, the calculator might suggest a battery size of approximately 222 Ah.

How much battery do I need to run a 3000-watt inverter?

You would need around 24v 150Ah Lithium or 24v 300Ah Lead-acid Battery to run a 3000-watt inverter for 1 hour at its full capacity Here's a battery size chart for any size inverter with 1 hour of load runtime Note! The input voltage of the inverter should match the battery voltage.

What voltage should a 12V inverter run on?

The input voltage of the inverter should match the battery voltage. (For example 12v battery for 12v inverter, 24v battery for 24v inverter and 48v battery for 48v inverter Summary What Will An Inverter Run & For How Long?

.

How much battery should a 500 watt inverter use?

For instance, if your power consumption is 500 watts, the usage time is 4 hours, and the inverter efficiency is 90%, the calculator might suggest a battery size of approximately 222 Ah. Practical Tips: Ensure all input values are accurate to avoid skewed results.

How much power does a 2000 watt inverter take?

If you max out the inverter at 2000 watts, you are pulling 2000 watts /12 volts = 166.6 DC amps per hour. If you use a 200-amp 12-volt battery, you would divide the 200-amp battery / 166.6 amps = 1.2 hours of run time. This is if you plan on fully depleting the battery, which we DON'T recommend. We recommend 50% depth of discharge.

## How big a battery should I use for a 2 kW inverter

---



✓ 50KW/100KWH

✓ HIGHER POWER OUTPUT  
IN OFF-GRID MODE

✓ CONVENIENT OPERATION  
& MAINTENANCE

✓ PRE-WIRED

### Solar Battery Sizes: How Much Solar Battery ...

Dec 14, 2022 · A solar battery is a great way to make the most out of solar energy. But what size do you need? To find out, check out our article on solar ...

[Get Started](#)

### Solar Inverter & Battery Sizing Calculator

Apr 30, 2025 · Choosing the correct inverter and battery size is crucial for every microgrid system. Our Solar Inverter and Battery Sizing Calculator provides a ...



[Get Started](#)



### What Inverter Size is Best for a 100Ah Battery?

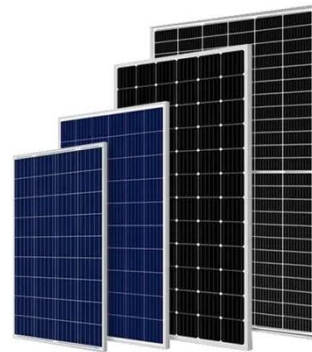
A 12V 100Ah battery can reasonably power an inverter up to 1000W-1200W for short periods. For continuous loads, 500W-800W is more efficient and battery-friendly.

[Get Started](#)

## What Size Solar Inverter Do I Need?

Feb 17, 2025 · The exact impact of your solar battery on inverter size depends on factors like battery capacity, inverter compatibility, and your specific energy ...

[Get Started](#)



## How Many Batteries Do I Need For a 10kw Solar System?

With enough batteries you can store extra power produced by a 10kw solar system. Simple calculations explain how many you will need.

[Get Started](#)

## Recommended Inverter Cable, Breaker & Fuse ...

Determine what size inverter-to-battery cables and DC breaker (or fuse) you should use with an off-grid inverter to install and operate it safely. Use this ...

[Get Started](#)



## What Size Inverter You Need (Calculations)

Oct 6, 2022 · The size of the inverter required will be determined by the total



wattage of the appliances you need to operate and the time they need to run.

...

[Get Started](#)

---

## How to Calculate Battery Size for Inverters of Any Size

Learn how many batteries for a 3000-watt inverter or a 1kVA inverter and more, right here at The Inverter Store. In order to size a battery bank, we take the hours needed to continuously run ...

[Get Started](#)



---

## Step-by-Step Guide to Select Best Inverter for ...

Find out how to choose the best inverters for home with tips on capacity, battery type, brand, and features to ensure reliable backup during power cuts.

[Get Started](#)



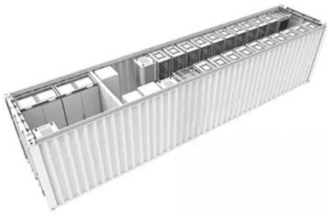
---

## How Big of a Battery Do I Need for a 1000 Watt Inverter? A

Aug 13, 2024 · When planning for a 1000

watt inverter setup, one of the most crucial factors to determine is the battery capacity required to power it effectively. Understanding the right ...

[Get Started](#)



## Solar inverter size: Calculate the right size for ...

2 days ago · Discover why solar inverter sizing is important for efficiency and performance. Learn how to calculate the ideal inverter size for your solar ...

[Get Started](#)

## How Many Batteries for a 2000 watt Inverter?

Mar 7, 2023 · Do you need to know how many batteries you need for a 2,000W inverter? Read this article for calculations and diagrams of different battery ...

[Get Started](#)



## Microsoft Word

Dec 1, 2023 · It's always better to buy an inverter that is too big for your needs, rather than one equal to, or too small. If



you overload the inverter it will trip, and if it trips repeatedly, your ...

[Get Started](#)

## How to Size an Inverter for Solar Panels: A ...

Feb 12, 2025 · When installing a solar panel system, choosing the right inverter size is crucial for ensuring optimal energy production and efficiency. The ...



[Get Started](#)



## What size power inverter can my truck run?

Jul 12, 2020 · I bought a 2000 watt (4000 watt peak) inverter. I want to install it into my truck with a 4.3 vortec. Does any one know if my alternator and battery ...

[Get Started](#)

## How to Calculate the Right Battery Size for Your ...

Selecting the perfect battery size for your inverter system is important for



guaranteeing an effective and reliable power supply. A small battery may ...

[Get Started](#)



## What Size Inverter Can I Run Off a 100Ah Battery? A ...

Aug 13, 2024 · Understanding Battery and Inverter Basics Battery Capacity and Inverter Compatibility A 100Ah battery signifies its capacity to deliver 100 ampere-hours of current. This ...

[Get Started](#)

## What Size Wire For Any Inverter: Inverter Wire ...

Choosing the right cables for your inverter can be downright confusing. This guide helps you find the right size wire for any sized inverter.

[Get Started](#)



## How Big Of an Inverter Can My Car Handle

Apr 17, 2022 · The inverter is the device that converts power from battery-

powered electronics to the voltage used by your car (120 volts). The greater ...

[Get Started](#)



## What Will An Inverter Run & For How Long?

Mar 3, 2023 · I saw on many forums that most people are confused about what they can run on their 1000,1500,2000,3000, & 5000-watt inverter and how long ...

[Get Started](#)



## Can a Battery Be Too Big for an Inverter?

Dec 12, 2023 · Yes, a battery can be too big for an inverter, leading to inefficiencies and potential safety issues. Oversized batteries may not discharge correctly or could exceed the inverter's ...

[Get Started](#)



## How to Calculate the Right Inverter Battery Capacity for ...

Feb 24, 2025 · Learn how to calculate

the right inverter battery capacity for your needs with a simple formula. Understand power requirements, efficiency losses, and the best battery types ...

[Get Started](#)



## Can an Inverter Be Too Big for Your Battery System?

How to Calculate the Right Inverter Size for Your Battery Match the inverter's continuous wattage rating to the battery's discharge capacity. For a 12V 200Ah battery (2.4kWh), a 2000W inverter ...

[Get Started](#)

## What size fuse between battery and inverter?

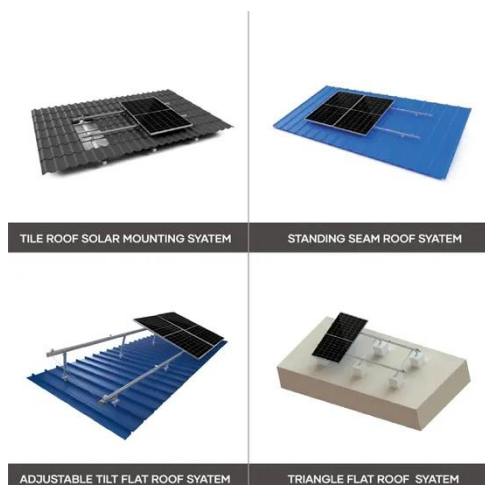
Apr 22, 2024 · The amp rating of the fuse you use between your battery bank and inverter should logically not exceed the Ampacity of the wire between the ...

[Get Started](#)



## Inverter Wire Size Calculator

Unsure how to connect your inverter and battery? Check The Inverter Store's



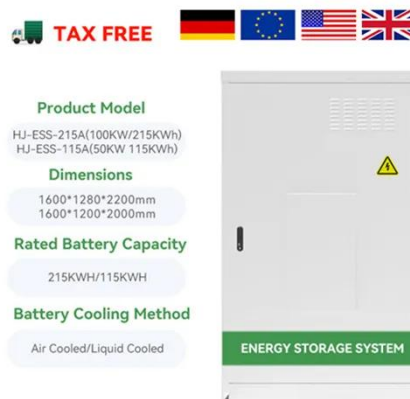
handy calculator and guide that breaks down the complex process for you easily.

[Get Started](#)

## Calculate Battery Size for Inverter Calculator

Mar 14, 2025 · The Calculate Battery Size for Inverter Calculator helps you determine the optimal battery capacity needed to support your inverter system. By inputting critical parameters such ...

[Get Started](#)



## What Size Fuse for 400, 750, 1000, 1500, 2000, 3000-watt Inverter

Quick Anwser The 400, 750, 1000, 1500, 2000, 3000 watt inverter would require 40A, 75A, 100A, 150A, 200A, 300A respectively. Remember that the size of the Fuse would also determine ...

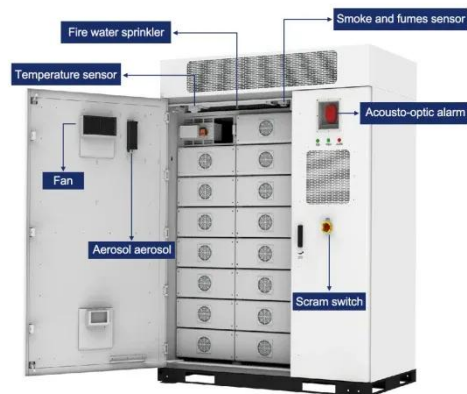
[Get Started](#)

## Batteries for a 3000 Watt Inverter: A Complete ...

Ahhhh batteries, inverters, and

runtimes... It can be a bit of a nightmare trying to work out the best battery size for your 3000 watt inverter.

[Get Started](#)



## What Size Inverter Do I Need for a 200AH Battery?

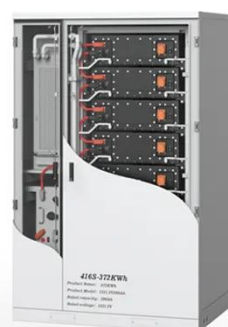
Dec 15, 2023 · To determine the appropriate inverter size for a 200AH battery, you need to consider the total wattage of the devices you plan to power. A general rule is to choose an ...

[Get Started](#)

## How Many Batteries for 2 kW Solar System?

Mar 13, 2024 · If your inverter capacity is greater than 2kW and the continuous wattage your devices use is more than 2000 watts (inverter draw more than ...

[Get Started](#)



## How big an inverter should I use for a 10KW ...

Solar inverter sizing is rated in watts (W). As a general rule of thumb, your



solar inverter wattage should be about the same as your solar array's total capacity, within the optimal ratio. For ...

[Get Started](#)

---

## Calculating the Right Battery Size for Your 3000W Inverter: A

When it comes to setting up an off-grid power system or a backup power solution, one of the most critical components to consider is the battery bank. The size and capacity of your battery bank ...



[Get Started](#)



---

## Inverter Size Calculator - self2solar

Feb 20, 2025 · Determining the Inverter Size to Match the Solar Panel Array  
Determining the correct inverter size depends on your solar array's capacity ...

[Get Started](#)

---

**Contact Us**

For catalog requests, pricing, or partnerships, please visit:  
<https://www.persianasaranda.es>