

SolarInvert Energy Solutions

How big an inverter can a 60v be equipped with



Overview

What size inverter do I Need?

Inverters come in different sizes starting from as little as 125 watts. The typical inverter sizes used for residential and commercial applications are between 1 and 10kW with 3 and 5kW sizes being the most common. With such an array of options, how do you find the right size for you?

An inverter works best when close to its capacity.

What are the different solar inverter sizes?

Solar generators range in size from small generators for short camping trips to large off-grid power systems for a boat or house. Consequently, inverter sizes vary greatly. During our research, we discovered that most inverters range in size from 300 watts up to over 3000 watts. In this article, we guide you through the different inverter sizes.

What is the inverter size calculator?

The Inverter Size Calculator is a valuable tool for determining the appropriate inverter size based on your power needs and electrical load. It is widely used in selecting inverters for residential, commercial, and solar applications, ensuring that the inverter's capacity matches the required energy demands efficiently.

How much power does an inverter need?

The continuous power requirement is actually 2250 but when sizing an inverter, you have to plan for the start up so the inverter can handle it. Third, you need to decide how long you want to run 2250 watts. Let's say you would like to power these items for an eight-hour period.

Why does inverter size matter?

1. Introduction: Why Inverter Size Matters An inverter converts DC power

(from batteries or solar panels) into AC power (for household appliances). Picking the wrong size can lead to:

How to choose a power inverter?

Second, select an inverter. For this example, you will need a power inverter capable of handling 4500 watts. The continuous power requirement is actually 2250 but when sizing an inverter, you have to plan for the start up so the inverter can handle it. Third, you need to decide how long you want to run 2250 watts.

How big an inverter can a 60v be equipped with



How To Size A Solar Inverter in 3 Easy Steps

Inverters come in different sizes starting from as little as 125 watts. The typical inverter sizes used for residential and commercial applications are between 1 ...

[Get Started](#)

Find the Ideal Inverter Size Using our Inverter ...

May 18, 2022 · Inverter Run-time Calculator One of the most frequent questions that we get is how big an inverter do I need? It depends is usually how we ...

[Get Started](#)



-  **Efficient Higher Revenue**
 - Max. Efficiency 97.5%
 - Max. PV Input Voltage 600V
 - 150% Peak Output Power
 - 2 MPPT Trackers, 150% DC Input Oversizing
 - Max. PV Input Current 15A, Compatible with High Power Modules
-  **Intelligent Simple O&M**
 - IP68 Protection Degree: support outdoor installation
 - Smart I V Curve Diagnosis Function: locate PV string faults accurately and automatically detect faults
 - DC & AC Type II SPD: prevent lightning damage
 - Battery Reverse Connection Protection
-  **Flexible Abundant Configuration**
 - Plug & Play, EPS Switching Under 10ms
 - Compatible with Lead-acid and Lithium Batteries
 - Max. 8 Units Inverters Parallel
 - AFCI Function (Optional): when an arc fault is detected the inverter immediately stops operation

How big of an inverter do I need for 60 volts

Jun 12, 2025 · How much power does an inverter use? Most inverters have an efficiency of between 60% and 80%. This efficiency can also be referred to as the power factor of an ...

[Get Started](#)

What Can a 600W Inverter Run? The Ultimate Guide to 600 Watt Inverters

Jun 9, 2025 · Discover what a 600w inverter can run, from laptops to small appliances. Learn usage tips, battery needs, and best practices for off-grid or backup power.



[Get Started](#)



How Big of an Inverter Can My Car Handle: ...

Apr 1, 2023 · How Big of an Inverter Can My Car Handle: Understanding Your Car's Electrical System To determine the maximum size of an inverter that ...

[Get Started](#)

Useful guide to inverter peak power and how to ...

Dec 17, 2023 · In this article, we will provide an overall introduction to inverter peak power, including what it is and how it's different on various kinds of load. ...

[Get Started](#)



Calculator

Are you tired of struggling with complex calculations for inverter size, battery capacity, and battery backup time? Look

no further! Our powerful calculators are here to make your life easier. With ...

[Get Started](#)



How Big an Inverter Can Be Installed for 60V Voltage

Installing the right inverter size for a 60V system is critical for maximizing energy efficiency and system longevity. Whether you're designing a solar power setup, an industrial backup system, ...

[Get Started](#)



How long can I run the power inverter on my battery?

Note: If you intend to use power tools for commercial use, or any load of 200W for more than 1 hour regularly (between battery recharging) we recommend installing an auxiliary battery to ...

[Get Started](#)



What Size Inverter Do I Need To Run A Pump?

Jan 12, 2024 · What Size Inverter Do I Need to Run a Pump? Nowadays, with

the increasing demand for portable power solutions, many individuals find ...

[Get Started](#)



✓ IP65/IP55 OUTDOOR CABINET

✓ IP54/55

✓ OUTDOOR ENERGY STORAGE CABINET

✓ OUTDOOR MODULE CABINET

Taingwei 350W Power Inverter for Dewalt 20v ...

Sep 17, 2024 · The Taingwei 350W Power Inverter is a versatile and efficient tool that transforms the power of your Dewalt 20V or 60V battery into a reliable AC ...

[Get Started](#)

4000W 5000W 6000W 7000W 8000W 9000W Pure Sine Wave Power Inverter ...

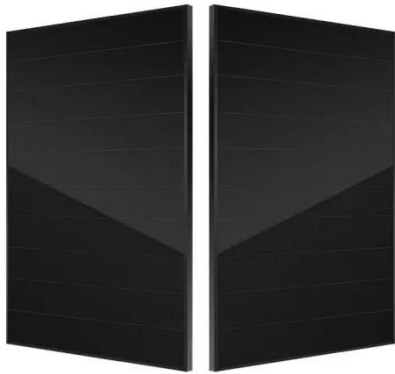
Pure Sine Wave Inverter : The car inverter converter adopts pure sine wave technology, which has low interference, low noise and large load capacity, it is a voltage converter that converts ...

[Get Started](#)



How Many Watts Can a 60 Amp Charge Controller Handle?

Can your 60 amp charge controller



handle your solar system? Use this simple guide to find out how many watts your controller can work with.

[Get Started](#)

What size inverter can you run off a car battery?

Aug 11, 2025 · A typical 12-volt car battery can safely support an inverter ranging from about 150 watts up to 600 watts for regular use without harming the battery. While it is technically ...



[Get Started](#)



☒ IP65/IP55 OUTDOOR CABINET

☒ ALUMINUM

☒ OUTDOOR ENERGY STORAGE CABINET

☒ OUTDOOR MODULE CABINET

How to size your inverter

Dec 28, 2021 · Some inverters can handle 600vdc to 1000Vdc, depending on the manufacture for different use of the equipment. Some inverters can connect to ...

[Get Started](#)

Calculate Battery Size for Inverter Calculator

Mar 14, 2025 · The Calculate Battery Size for Inverter Calculator helps you

determine the optimal battery capacity needed to support your inverter system. By inputting critical parameters such ...

[Get Started](#)



BESS Inverter: Understanding Battery Energy Storage Systems

Nov 25, 2023 · In this blog post, we have delved into the world of BESS inverters and gained a deeper understanding of their significance in battery energy storage systems.

[Get Started](#)

How Many Solar Panels Can I Connect to an ...

4 days ago · Learn how to optimize your solar power system by understanding how many solar panels can be connected to an inverter. Explore inverter ...

[Get Started](#)



What Will a 600 Watt Inverter Run?

What Can a 600 Watt Power Inverter



Run? You can run any appliance or electronics that require less than 600 watts of power. In reality, this means that ...

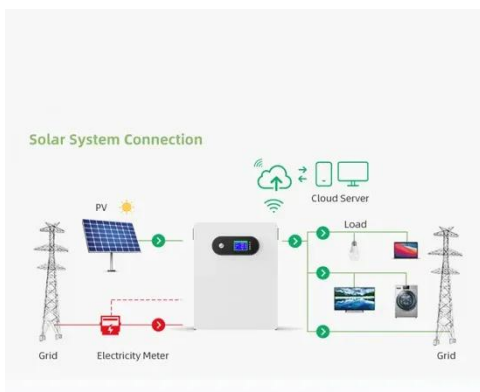
[Get Started](#)

The Only Inverter Size Chart You'll Ever Need

Whether you're looking for what size inverter is best for your house or something as simple as an inverter for power your TV, the proper size will be a

...

[Get Started](#)



Amazon : YAFODUTE High Power Pure Sine Inverter ...

Pure Sine Wave Inverter : The car inverter converter adopts pure sine wave technology, which has low interference, low noise and large load capacity, it is a voltage converter that converts ...

[Get Started](#)

Can an Inverter Be Too Big for Your Battery System?

Why Battery Chemistry Matters in Inverter Sizing Lithium-ion batteries

tolerate higher discharge rates (up to 1C) compared to lead-acid (0.5C). A 100Ah LiFePO4 battery can safely power a ...

[Get Started](#)



What Size Inverter Can I Run Off a 100Ah Battery? A ...

Aug 13, 2024 · This capacity influences how long an inverter can run appliances before needing a recharge. However, battery capacity alone doesn't dictate inverter size. The inverter converts ...

[Get Started](#)

Understanding inverters with 60 volts on hot and neutral

Jan 13, 2025 · I used to be an ABYC certified marine electrician about 20 years ago. I understand electricity fairly well, however I have not been able to find much online regarding portable ...

[Get Started](#)

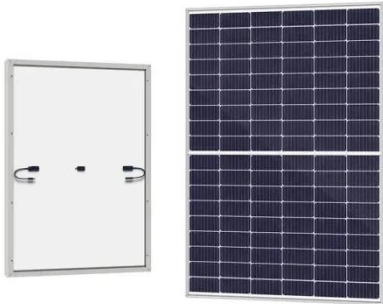


What Size Inverter You Need (Calculations)

Oct 6, 2022 · Inverters have a power rating in watts (W), which determines

how much power they can supply, and the batteries have an amp-hour rating, ...

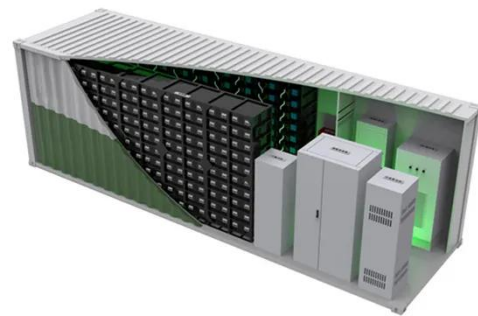
[Get Started](#)



What Size Inverter Do I Need?

Oct 25, 2023 · Looking at all the inverter options can be overwhelming. What are all the numbers, and what do they mean? If you're not an electrician, it can be tricky to figure out how to find an ...

[Get Started](#)



Can a 48V Motor Handle 60V? Understanding Voltage ...

Aug 20, 2024 · Many 48V motors can handle up to around 60 volts; however, consistent operation at this level may lead to overheating or premature wear if not designed for such conditions. In ...

[Get Started](#)

What Size Inverter Do You Need? A Complete ...

Jun 4, 2025 · Choosing the right inverter size is crucial--too small, and your

appliances won't work; too large, and you'll waste money. This guide will help

...

[Get Started](#)



The Best Inverter Size for Power Tool Batteries

3 days ago · To determine the correct size inverter for charging power tool batteries, you need to know the battery voltage and amp-hour rating. The ...

[Get Started](#)

How Big Of an Inverter Can My Car Handle

Apr 17, 2022 · The inverter is the device that converts power from battery-powered electronics to the voltage used by your car (120 volts). The greater ...

[Get Started](#)



How to connect 60v solar energy , NenPower

Feb 22, 2024 · To connect a 60V solar energy system, there are several



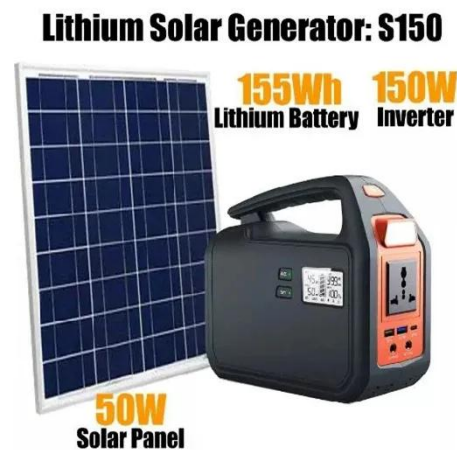
essential steps involved: 1. Begin with proper equipment selection, 2. Ensure safe installation practices, 3. Connect the ...

[Get Started](#)

How To Size an Inverter: Solar Inverter Sizing ...

Jul 11, 2024 · When sizing an inverter, calculate the total wattage needed and understand surge vs. continuous power. Choose the right size with a 20% ...

[Get Started](#)



Inverter Size Calculator [Power Inverter, AC, DC, ...

Feb 7, 2025 · To calculate the size of an inverter, multiply the total wattage of connected devices by a safety factor, then divide by the inverter's efficiency.

...

[Get Started](#)



How Big an Inverter Can a 60A Power Supply Support A ...

Understanding the Relationship Between Power Supply and Inverter Capacity If

you're working with solar energy systems or industrial power setups, one critical question arises: how big an ...

[Get Started](#)



Contact Us

For catalog requests, pricing, or partnerships, please visit:
<https://www.persianasaranda.es>