

SolarInvert Energy Solutions

How long can a 48v55ah inverter 2000w supply power

LiFePO₄ Battery, safety

Wide temperature: -20~55°C

Modular design, easy to expand

The heating function is optional

Intelligent BMS

Cycle Life: ≥ 6000

Warranty: 10 years



Overview

Our batteries store power in DC (Current current) but most of our household appliances require AC (Alternating current) Our batteries come in different voltages (12,24, & 48v) But AC appliances requir.

How long can a 200Ah battery run a 1kW inverter?

Battery Running Time = (Battery Power Capacity (Wh) / Inverter Power (W)) x Inverter Efficiency %
Battery Running Time = (1200 Wh / 1000 W) x 95%
Battery Running Time = 1.14 Hours or 1 Hour and 8 Minutes So, a 200Ah 12V lead acid battery with 50% DOD could power a 1kW inverter with 95% efficiency at maximum load for 1 Hour and 8 Minutes.

How long does a 24V inverter last?

An inverter draws its power from the battery so the battery capacity and power load determines how long the inverter will last. Regardless of the size, the calculation steps are always the same. Using this calculation, a 24V inverter with a 100ah battery and 93% efficiency can run a 500W load for 2.3 hours.

Does a 2000 watt inverter support a 24v/48v battery?

(Note: Not all 2000-watt inverters support 24V/48V batteries. You need to ensure that the inverter's input voltage matches the battery voltage.) Use Energy-Efficient Appliances: High-efficiency devices consume less power, extending battery life. Avoid Overloading: Running a full 2000W continuously drains the battery faster.

How long can a 24V inverter run a 500W load?

Using this calculation, a 24V inverter with a 100ah battery and 93% efficiency can run a 500W load for 2.3 hours. You have a 24V inverter with a 150ah deep cycle battery. The inverter is 93% efficient. You want to run a 700 watt load, so how long can the inverter run this?

The inverter can run a 700 watt load for 2.4 hours.

Why should you buy a 2000 watt inverter?

Emergency Backup Power: Provides temporary power during outages. Before purchasing, ensure your battery setup matches your energy needs to avoid unexpected power shortages. By selecting the right battery size and optimizing power usage, a 2000 watt inverter can efficiently provide reliable power for your needs.

How to calculate inverter efficiency?

Let's say my inverter is 1kW = 1000 W with an efficiency of 95%. The equation is: Battery Running Time = (Battery Power Capacity (Wh) / Inverter Power (W)) x Inverter Efficiency %
Battery Running Time = (1200 Wh / 1000 W) x 95%
Battery Running Time = 1.14 Hours or 1 Hour and 8 Minutes

How long can a 48v55ah inverter 2000w supply power



48V Battery Run Time Calculator

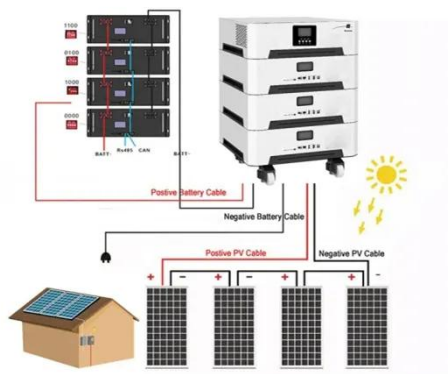
Jan 6, 2025 · Our 48V Battery Run Time Calculator takes the guesswork out of battery runtime estimation. Just enter your battery capacity, power ...

[Get Started](#)

Best 2000 Watt Inverters - Top Picks for Efficient ...

Dec 2, 2024 · If you're looking for a reliable and efficient power inverter, then a 2000 watt inverter is an excellent investment. It provides enough power to run ...

[Get Started](#)



How Long Can I Run The Power Inverter On My ...

Mar 18, 2025 · How long does an inverter that uses battery power actually last? This article will delve into this question and provide knowledge and calculations.

[Get Started](#)

Can I Run a 2000W Inverter with a 200Ah Battery?

Apr 22, 2025 · Learn how long a 2000W inverter will run on a 200Ah battery, the best inverter size for 200Ah batteries, and tips for optimizing your off-grid solar system.

[Get Started](#)



LFP 48V 100Ah

UPS Run Time/Battery Backup Time Calculator - ...

Manual/Generic Calculator: Calculate the estimated run time or battery backup time of any uninterruptible power supply (UPS) using the load in watts, the ...

[Get Started](#)

What Size Inverter Do I Need To Run A Tv?

Mar 3, 2023 · The power inverter will converter the low voltage coming from the battery into 110-220 volts so you can safely power your appliances like Tv, ...

[Get Started](#)



Calculate Battery Size For Any Size Inverter ...

Mar 3, 2023 · So I have made it easy for you, use the calculator below to

calculate the battery size for 200 watt, 300 watt, 500 watt, 1000 watt, 2000 ...

[Get Started](#)



Battery Runtime Calculator , How Long Can A ...

Feb 21, 2024 · Below is a detailed explanation of how to use the Battery Runtime Calculator. The Battery Runtime Calculator helps you estimate how long your ...

[Get Started](#)



How Long Will a 200Ah Battery Last with a 2000W Inverter?

Apr 26, 2025 · A 200Ah battery can theoretically power a 2000W inverter for approximately 1.2 hours under ideal conditions. However, real-world factors such as inverter efficiency and load ...

[Get Started](#)



Can a 2000W Inverter Run a Refrigerator? Unlocking the ...

Dec 10, 2024 · Yes, a 2000W inverter can generally power a refrigerator,

provided that the refrigerator's peak power usage does not exceed the inverter's capacity. Most standard ...

[Get Started](#)



Can A 200Ah Battery Run On A 2000 Watt Inverter? Load ...

Mar 30, 2025 · A 200Ah battery can support a 2000W inverter for about 2.2 hours at full capacity. If you use a 400W appliance, the runtime extends to roughly 11 hours.

[Get Started](#)

What Size Wire For Any Inverter: Inverter Wire ...

Choosing the right cables for your inverter can be downright confusing. This guide helps you find the right size wire for any sized inverter.

[Get Started](#)



How Long Will A 200Ah Battery Last With A ...

Jul 5, 2023 · Have you ever wondered how long a 200Ah battery can power a



2000W inverter? This question holds significant importance, especially when ...

[Get Started](#)

UPS Runtime Calculator

Aug 15, 2019 · The UPS Runtime Calculator works out the runtime you will get for any UPS battery configuration. Just enter the load, the battery capacity and ...

[Get Started](#)



☒ IP65/IP55 OUTDOOR CABINET

☒ OUTDOOR TELECOM CABINET

☒ OUTDOOR ENERGY STORAGE CABINET

☒ 19 INCH

How Long Will 12V Battery Last When Using a ...

Oct 14, 2024 · Inverters are often used in conjunction with batteries to power various appliances and devices. In a previous blog we discussed: What Can a ...

[Get Started](#)

Can I Use an Inverter to Run a Heater?

A 2000W inverter powered by a 400ah battery bank can run a 1500W heater for

2 to 3 hours, which is enough time to warm up a 500 sq. ft. room. A smaller area requires less power to run, ...

[Get Started](#)



How Long Can a 100Ah Battery Power a 2000W Inverter?

Feb 22, 2025 · A 100Ah battery can power a 2000W inverter for about 30-36 minutes under ideal conditions, but real-world factors like inverter efficiency, battery type, and discharge limits often ...

[Get Started](#)

2000W Inverter Guide: Basics, Types, What Can It ...

Jun 4, 2025 · How Long Can a 2000W Inverter Run? If you are new to the concept of a 2000W inverter, it may be challenging for you to provide an ...

[Get Started](#)



Will A 2000 Watt Inverter Run A Full Size ...

Jul 5, 2023 · Therefore, before

Sample Order
UL/KC/CB/UN38.3/UL



purchasing an inverter, make sure to check your refrigerator's specifications and power information, and choose the appropriate ...

[Get Started](#)

How Long Will A Battery Run A 2000 Watt Inverter? Key ...

Mar 13, 2025 · What Factors Impact How Long a Battery Can Power a 2000 Watt Inverter? The duration a battery can power a 2000-watt inverter depends on several key factors. Battery ...



[Get Started](#)



How Long Will a 2000W Inverter Run on Battery Power?

Feb 18, 2025 · A 2000W inverter can power devices totaling $\leq 2000W$ continuously, with surge capacity up to 4000W for milliseconds. Example loads: fridge (600W), microwave (1000W), ...

[Get Started](#)

Cooking Up Power: Can a 2000W Inverter Run a Microwave?

How long can a 2000W inverter power a microwave? The runtime of a 2000W inverter powering a microwave will depend on several factors, including the inverter's battery capacity and the ...

[Get Started](#)



How Long Does a 12V Battery Last with a 2000W Inverter?

Jul 1, 2025 · A 12V battery's runtime with a 2000W inverter depends on your usage. For short bursts (power tools, microwaves), a 200Ah battery works.

[Get Started](#)

How Long Will a 2000W Inverter Run?

Oct 22, 2023 · When it comes to using a 2000W inverter, understanding how long it can run is crucial for planning and optimizing power usage. In this article, we ...

[Get Started](#)



Powering Your Home: Can a 2000 Watt Inverter Run a ...

Nov 26, 2024 · In the age of technology, having a reliable power source is crucial.



One of the most common inquiries among homeowners and campers is whether a 2000 watt inverter can ...

[Get Started](#)

How Long Will a Battery Power an Inverter?

Calculating How Long a Battery Will Run an Inverter The length of time your battery will last on an inverter depends on how much energy you are using. It ...

[Get Started](#)



How Long Will A Battery Run A 2000 Watt Inverter? Key ...

Mar 13, 2025 · A 2000 watt inverter can run for approximately 36 minutes on a fully charged 12-volt, 100 Ah battery. This estimate accounts for the battery's capacity

[Get Started](#)



How Long Will a Battery Last With an Inverter?

Jul 22, 2022 · One of the most common concerns that irritate solar power system

owners is the battery running duration.
This is very important since it tells you ...

12V 10AH

[Get Started](#)


7 Best 2000 Watt Power Inverters , Reliable Picks 2025

Aug 1, 2025 · Compare the top 7 best 2000 watt power inverters. Get expert reviews, efficiency ratings, and key features for reliable power solutions.

[Get Started](#)

How Long Will a 2000w Inverter Run?

Jul 25, 2024 · As a green, renewable and clean energy source that has been widely used, solar energy is popular because of its convenience and ...

[Get Started](#)


What Will 2000W Inverter Run?

Jul 3, 2023 · When we talk about inverters, one crucial aspect is "power."



A 2000-watt inverter refers to its output power, which denotes the amount of electrical ...

[Get Started](#)

How Long Will a 2000 Watt Inverter Run? Battery Sizing ...

Mar 18, 2025 · For example, if using a 48V 100Ah LiFePO4 battery (4,800Wh capacity) with a 2000 watt inverter running at 90% efficiency: This means the system could power a full 2000W ...



[Get Started](#)

Contact Us

For catalog requests, pricing, or partnerships, please visit:
<https://www.persianasaranda.es>