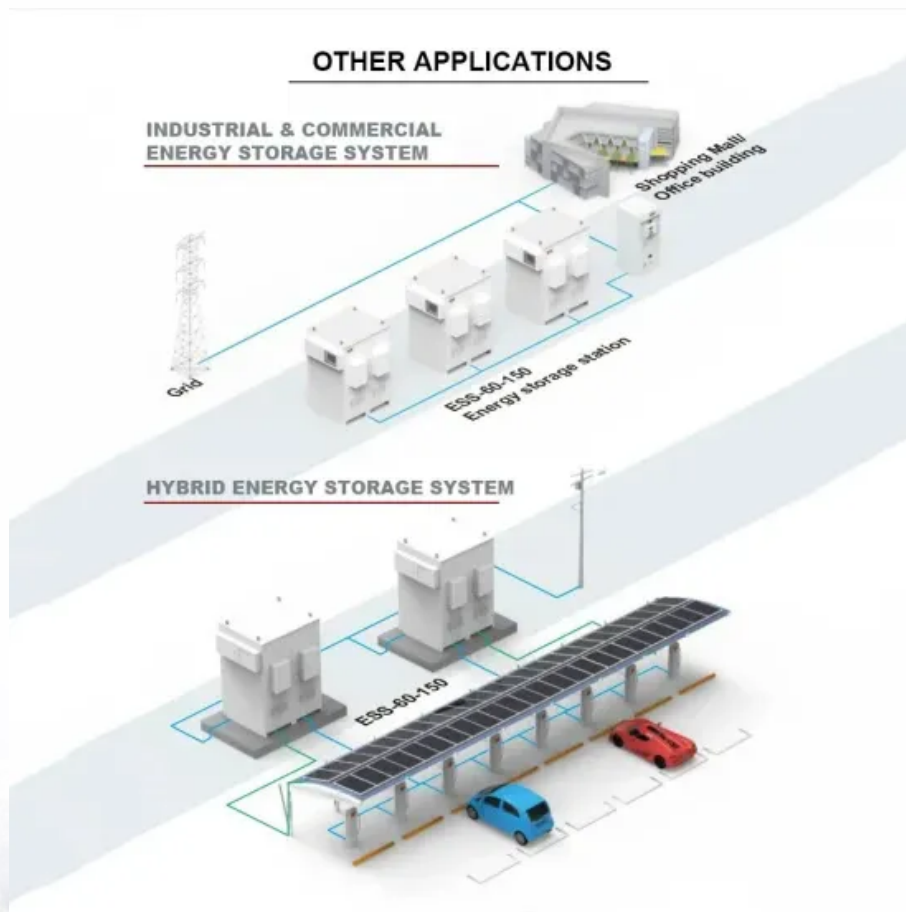


SolarInvert Energy Solutions

**How many amperes are there in
a 12v lithium battery pack with
3 series and 8 parallels**



Overview

What is the ampere capacity of a 12 volt battery?

Remember that a 12-volt battery's ampere capacity can vary depending on the battery's wattage and voltage. Generally, a 12-volt battery can have an ampere capacity in the 20-50 Ah range. So, when you're out there dealing with 12-volt batteries, remember these golden nuggets of wisdom.

What is a 12V lithium ion battery pack?

A 12V lithium ion battery pack is a battery pack made up of three or four lithium batteries connected in series and several lithium batteries connected in parallel. This configuration allows the capacity of a 12V lithium battery to be customized.

How many amps can a 12 volt battery deliver?

Depending on your vehicle, you can even have a 12-volt battery with a capacity of 50Ah, 60Ah, or 100Ah. Here's a fun equation to remember: if a 12-volt battery is rated at 80 Ah, it can deliver 80 amps in an hour or 40 amps in 2 hours, and so on. [RELATED Klein vs. Fluke Multimeter.](#)

What is the capacity of a 12V lithium ion battery?

The capacity of a 12V lithium ion battery can be 2200mAh, 5Ah, or 10Ah. Some electric vehicles can reach 20Ah or 50Ah. The capacity depends on the number of batteries connected in parallel, with larger capacities resulting from more batteries. The volume of a 12V lithium battery is not uniformly specified and increases with the battery's size.

How do I calculate the capacity of a lithium-ion battery pack?

To calculate the capacity of a lithium-ion battery pack, follow these steps:
Determine the Capacity of Individual Cells: Each 18650 cell has a specific capacity, usually between 2,500mAh (2.5Ah) and 3,500mAh (3.5Ah). Identify the Parallel Configuration: Count the number of cells connected in parallel.

What is the difference between lithium battery in series and parallel?

Lithium battery in series: the voltage is added, the capacity remains the same, and the internal resistance increases. Lithium batteries in parallel: the voltage remains the same, the capacity is added, the internal resistance is reduced, and the power supply time is extended.

How many amperes are there in a 12v lithium battery pack with 3 s



Battery Calculator

Based on these inputs, the battery calculator will compute the required battery capacity or life, helping you to select the appropriate battery for your needs, ensuring optimal device ...

[Get Started](#)

Amp Hour Calculator: How To Calculate Amp ...

6 days ago · How many amp hours battery do I need? This device will burn through 2,400Wh of electricity. You need a 2,400Wh battery. Given that most ...

[Get Started](#)



Amazon : 12v 12ah Lithium Battery

ZyneCell® - 12V 12Ah Rechargeable Lithium Ion Battery with BMS for Agriculture spray pump, Inverter, CCTV Camera, Solar light, Toys, Industrial, Marine and RV Applications etc.

[Get Started](#)

What Is Charge Current? Understanding Amps in ...

Mar 29, 2024 · What is charge current and why is it important for a 12V battery? Charge current is the rate at which electrical current flows into a battery during ...

[Get Started](#)



What Are The Amps Of A 12V Car Battery? Understanding ...

Jul 21, 2025 · A 12V car battery typically provides 45-100 amp-hours (Ah) of capacity and 400-800 cold cranking amps (CCA). This ensures reliable engine starts and stable power for ...

[Get Started](#)

Understanding battery capacity: Ah is not A

A typical alkaline or NiMH battery in the standard "AA" size has about 2000 to 3000 mAh (or 2 to 3 Ah). With a cell voltage of 1.2 V to 1.5V, this corresponds ...

[Get Started](#)



How Many Cells Does A Battery Have? Uncover Battery Design For 12V ...



Mar 14, 2025 · A standard 12V lithium battery pack typically consists of multiple lithium-ion cells arranged in series and parallel configurations. Each lithium-ion cell has a nominal voltage of ...

[Get Started](#)

How to Calculate Lithium-Ion Battery Pack ...

Aug 8, 2024 · To calculate the capacity of a lithium-ion battery pack, follow these steps: Determine the Capacity of Individual Cells: Each 18650 cell has a ...



[Get Started](#)

Amazon : 12 Volt Lithium Ion Battery Pack

TalentCell Rechargeable 12V 6000mAh/5V 12000mAh DC Output Lithium ion Battery Pack for LED Strip/CCTV Camera/Telescope/Modem and More, Portable Li-ion Power Bank with 12.6V ...

[Get Started](#)



How Many Watts In A 12 Volt Battery?

1 day ago · On top of that, you can use:

'How Many Watts In A 12V Battery'
Calculator found below. Basically, you
just insert the battery capacity in amp ...

[Get Started](#)



Cells Per Battery Calculator

Nov 8, 2024 · The Cells Per Battery Calculator is a tool used to calculate the number of cells needed to create a battery pack with a specific voltage and ...

[Get Started](#)

How Many Amps in a 12 Volt Battery? (Calculation)

Apr 24, 2024 · Definition and Relevance: Ampere-hours quantify the charge capacity of a battery. A 12-volt battery with a 100 Ah rating can, in theory, ...

[Get Started](#)



Lithium Series, Parallel and Series and Parallel

Mar 23, 2021 · Lithium Series, Parallel and Series and Parallel Connections



Introduction Lithium battery banks using batteries with built-in Battery Management Systems (BMS) are created by ...

[Get Started](#)

How Many Amps Do I Need to Charge a 12 Volt Lithium Battery?

Oct 25, 2024 · To charge a 12-volt lithium battery, the recommended charging current typically ranges from 10% to 50% of the battery's capacity in amp-hours (Ah). For example, a 100Ah ...



[Get Started](#)



Battery Pack Calculator , Good Calculators

Here's a useful battery pack calculator for calculating the parameters of battery packs, including lithium-ion batteries. Use it to know the voltage, capacity, energy, and maximum discharge ...

[Get Started](#)

12V Lithium Ion Battery Guide, 12V Li Ion Battery ...

12V lithium battery is a lithium battery

pack composed of 3 or 4 lithium batteries in series. The capacity of the battery is determined by the capacity of the single ...

[Get Started](#)



100Ah Battery Runtime Decoded: Expert Calculations for Lithium...

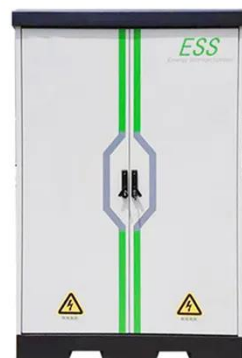
Apr 18, 2025 · Learn how to calculate 100Ah battery lifespan for LiFePO4, lithium, and lead-acid types. Includes real-world runtime charts, efficiency factors, and applications.

[Get Started](#)

5 Best 12 Volt Lithium RV Batteries Reviewed

Apr 23, 2023 · RV lithium batteries are becoming a popular choice among campers because of their lightweight and long life. Here are some of the best ...

[Get Started](#)

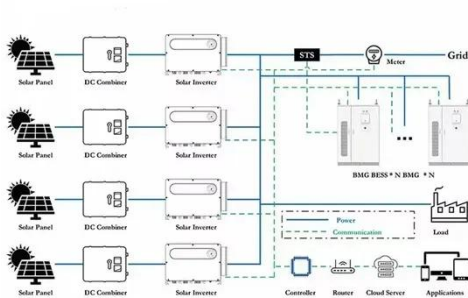


How to Check Battery Amps with a Multimeter

Feb 2, 2025 · Learn how to check battery

amps with a multimeter. A step-by-step guide to ensure accurate readings and battery health.

[Get Started](#)



How to Charge a 12V Lithium Battery Step by ...

May 14, 2025 · This guide will provide you with all the necessary information to charge a 12V battery effectively and safely.

[Get Started](#)



12V Lithium Ion Battery Guide, 12V Li Ion Battery ...

12V lithium batteries are divided into 12V lithium ion battery, 12V lithium iron phosphate battery, 12V cylindrical lithium battery and 12V lithium polymer ...

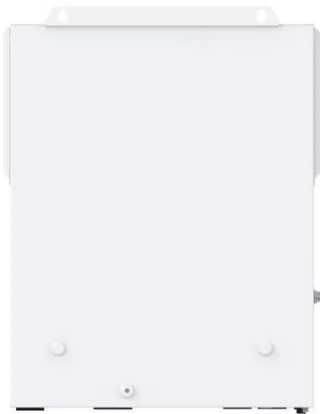
[Get Started](#)

How to Calculate the Number of Lithium ...

We all know that the series voltage of lithium batteries increases and the

parallel capacity increases. So how to calculate how many series and how many ...

[Get Started](#)



How many volts and amperes are the energy ...

Jul 27, 2024 · In contrast, lithium-ion batteries, which are prevalent in portable electronics and electric vehicles, often operate at higher voltages (e.g., 36 to ...

[Get Started](#)

How Many Cells In A 12V Lithium Battery? Guide To ...

Mar 14, 2025 · A 12V lithium battery usually has four cells connected in series. Each cell has a nominal voltage of 3.2V. In comparison, lead acid batteries have a nominal voltage of 2V per ...

[Get Started](#)



Car Battery Amperage Chart , Battery Tools

How Many Amps Are in a 12-Volt Car Battery? A 12-volt car battery typically



has an amperage rating between 40 and 80 amps. However, some high ...

[Get Started](#)

How Many Amps is a Car Battery? A Comprehensive Guide

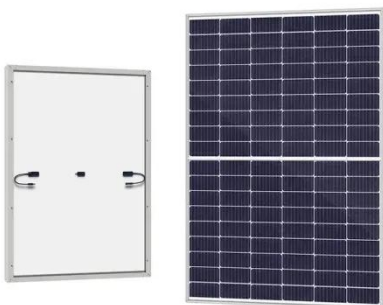
Apr 11, 2025 · How Many Amps Does a Car Battery Provide? (Key Metrics Explained) A standard car battery delivers 40-60 amp-hours (Ah) of capacity and 400-600 cold cranking amps (CCA). ...



[Get Started](#)

Lithium (LiFePO4) Battery Charge Time ...

Mar 3, 2023 · Calculating the battery's exact charge time is not an easy task. However, you can use our lithium battery charge time calculator to find out.



[Get Started](#)

Contact Us

For catalog requests, pricing, or partnerships, please visit:
<https://www.persianasaranda.es>