

## SolarInvert Energy Solutions

# How many volts does a communication base station have



## Overview

---

How many types of base stations are there?

Macro cell, Micro cell, Pico cell and Femto cell are 4 types of base stations in wireless communication networks. Macrocell antennas must be properly mounted on ground-based masts, rooftops or other existing structures and at heights for an unhindered, clear view of the surroundings.

What is a base station?

What is Base Station?

A base station represents an access point for a wireless device to communicate within its coverage area. It usually connects the device to other networks or devices through a dedicated high bandwidth wire of fiber optic connection. Base stations typically have a transceiver, capable of sending and receiving wireless signals;.

How many antennas does a base station have?

Generally speaking, a base station contains three antennas, each of which transmits signals to the surrounding 120-degree direction, which together can provide 360-degree seamless coverage. If we look carefully at the bottom of the antenna, we will find that there are strands of thin black wires extending downwards.

Is a base station a transmitter or broadcast point?

Base stations are generally a transceiver, capable of sending and receiving wireless signals; otherwise, if they only transmitted signals out, they would be considered a transmitter or broadcast point. A base station will have one or more radio frequency (RF) antennas to transmit and receive RF signals to other devices.

Do base stations need a power supply?

Power supply: The base station requires a power supply to operate. It may be connected to the electrical grid or have a backup power source like batteries or generators in case of power outages. 7. Backhaul connection: The base station needs a backhaul connection to connect to the core network.

What are the properties of a base station?

Here are some essential properties: Capacity: Capacity of a base station is its capability to handle a given number of simultaneous connections or users. Coverage Area: The coverage area is a base station is that geographical area within which mobile devices can maintain a stable connection with the base station.

## How many volts does a communication base station have

---



### Base Station Antenna: A Comprehensive Guide

Base station antennas play a critical role in modern telecommunications. They are essential components of wireless communication networks, enabling the ...

[Get Started](#)

### Why does the communication base station use

Feb 10, 2022 · Communication base stations use -48V power supply for most historical reasons. Historically, the communications industry equipment has ...

[Get Started](#)



### Base Stations

Jul 23, 2025 · What is Base Station? A base station represents an access point for a wireless device to communicate within its coverage area. It usually ...

[Get Started](#)



## What are Cell Towers and How Do They Work?

Apr 24, 2024 · How Do Cell Towers Work? A cell tower, also known as a cell site, or a Base Transceiver Station, is a structure that produces a cellular signal as ...

[Get Started](#)



## Complete Guide to 5G Base Station ...

Nov 17, 2024 · At the heart of mobile communication networks lies the main base station equipment. Central to this setup are three critical components-- BBU ...

[Get Started](#)



## Everything You Need to Know About GMRs/FRS, But ...

Oct 9, 2013 · Transmissions on the frequencies listed in Table 1 are permitted a maximum power output of 50 watts and a maximum FM deviation of  $\pm 5$  kHz. At these power levels, we can ...

[Get Started](#)



## The bewildering world of USB-C charging, ...

May 22, 2024 · From cables to power

supplies, it pays to know the intricacies of the USB-C spec if you want the fastest charging.

[Get Started](#)



**1075KWHH ESS**

---

## How Much Power does USB Port Output? (USB ...

Apr 5, 2024 · How much power does USB 3.2 provide? USB 3.2 Gen 1 delivers up to 4.5 watts (0.9 amps at 5 volts), while USB 3.2 Gen 2 can deliver up to ...

[Get Started](#)



---

## What is a base station?

Mar 4, 2021 · Base stations are generally a transceiver, capable of sending and receiving wireless signals; otherwise, if they only transmitted signals out, they ...

[Get Started](#)



---

## Determining the Right Number of Valve Base Stations for ...

Jul 2, 2025 · In today's industrial landscape, an increasing reliance on

automation and data transfer has made it vital for manufacturing plants and production facilities to understand how

...

[Get Started](#)



## What is the voltage for Tesla cars? Answers are ...

Jul 12, 2022 · Tesla Model S and Tesla Model X batteries run at nominal voltages of about 375 volts and 350 volts, respectively. Tesla Roadster batteries are ...

[Get Started](#)

## ICNIRP , Base Stations

The power of a base station varies (typically between 10 and 50 watts) depending on the area that needs to be covered and the number of calls processed. This is low compared to other

...

[Get Started](#)



## A guide to choosing Base Station Antennas

Mar 1, 2023 · 5G as a reality is already well underway. Most operators





worldwide have already adopted 5G as their main technology to support the increased ...

[Get Started](#)

## RF Safety FAQ

2 days ago · However, the FCC does have information for some services such as radio and television broadcast stations, and many larger antenna towers are ...

[Get Started](#)



## What is Telecommunication Base Station , China ...

Generally speaking, a base station consists of three antennas, each transmitting signals in a 120 degree direction towards the surrounding area, which together ...

[Get Started](#)



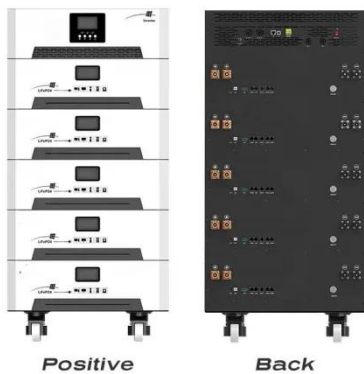
## What is a Base Station?

Apr 1, 2023 · What is a base station and how does a base station work? You may have a basic understanding of the



following questions after reading this article: ...

[Get Started](#)



## Setting Up Your Ham Radio Station: A Step-by ...

Location plays a crucial role, as it affects the efficiency and effectiveness of your station, so carefully consider where to establish your base. By following a step ...

[Get Started](#)

## -48VDC Power and the Backbone of the

Oct 4, 2019 · Throughout the history of the telecommunications industry, -48VDC has been the mainstay. In this blog, Servertech discusses -48VDC historically, ...

[Get Started](#)



## ICNIRP , Base Stations

Over large distances, the signals must be relayed by a communication network comprising base stations and often



supported by a wired network. The power of a base station varies (typically ...

[Get Started](#)

---

## What is a Base Station?

Apr 1, 2023 · The electromagnetic waves emitted by base stations and mobile phones are like air, filling us all around. Everyone knows mobile phones, ...

[Get Started](#)



---

## Base stations and networks

2 days ago · Mobile phones and mobile devices require a network of radio base stations to function. Radio waves have been used for communication for more than 100 years.

[Get Started](#)

---

## What Is The Typical Voltage For Power Lines?

Jan 13, 2011 · A power-generating station distributes electricity to

customers over a transmission system called the grid. Initially, electricity flows through the grid ...

[Get Started](#)



## Base Stations and Energy Levels

Jan 25, 2023 · [breadcrumb] Cellular Base Stations and Energy Levels Mobile communications work by using low power radio waves to carry speech and ...

[Get Started](#)

## Maximum Wattage?

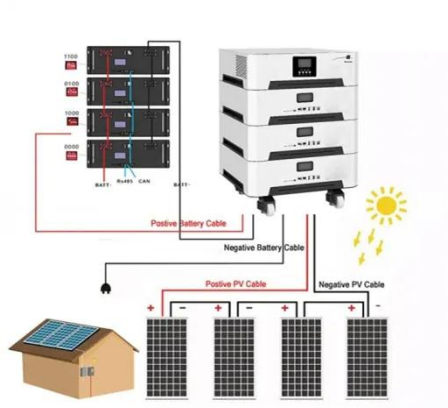
Jun 21, 2017 · Hopefully this straightens this out for you: Fixed station: A fixed station, not open to public correspondence, operated by, and for the sole use ...

[Get Started](#)



## What Are Base Station Antennas? Complete Guide

Nov 20, 2024 · In modern telecommunications systems, the base



station antenna stands out as an undeniable and crucial component to facilitate our daily ...

[Get Started](#)

## How do communication base stations work

Communication base stations, also known as cell towers or mobile phone masts, are essential components of wireless communication networks. They allow mobile devices to connect with ...

[Get Started](#)



## What is the voltage used in ethernet lines (UTP Cables)?

Jul 14, 2025 · I am asking this because after doing some research I found some conflicting information. First, on Wikipedia page on Ethernet physical layer I found that the voltage on the ...

[Get Started](#)

## Base Station

Aug 22, 2023 · Definition A base station refers to a fixed communication device that serves as a hub for connections in a

specific area, such as a wireless telephone system in a cellular ...

[Get Started](#)



## How many channels can a typical base station handle?

What is base station in communication?  
Base station (in communications)  
Definition: [A mobile phone base station is] a transmission and reception station in a fixed location, consisting of ...

[Get Started](#)



## Actual Base Station CB or use a Mobile as a base station

May 25, 2013 · Just wondered how many use an actual Base Station CB radio compared to those who use a mobile CB as their base station .just looking for how many people use which one. ...

[Get Started](#)



## Generating Power to Your House

The 240 volts enters your house through a watt-hour meter, which measures your

electrical consumption so the power company can charge you for putting up ...

[Get Started](#)



---

## Contact Us

For catalog requests, pricing, or partnerships, please visit:  
<https://www.persianasaranda.es>