

SolarInvert Energy Solutions

How to charge the base station lithium battery



Overview

How do you charge a lithium ion battery?

The key components are: Use a compatible lithium-ion battery charger designed for the specific battery chemistry and voltage. Ensure the battery and charger are at room temperature (around 20°C) for optimal charging efficiency. Remove the battery from the device or equipment if possible for better heat dissipation during charging.

What are the best practices when charging lithium-ion batteries?

To ensure optimal performance and safety when charging lithium-ion batteries, adhere to the following best practices: Use Compatible Chargers: Always use chargers designed specifically for lithium batteries to avoid damage and ensure proper charging.

How do I choose a charger for a lithium battery?

Your charger should match the voltage output and current rating of your specific battery type. Lithium batteries are sensitive to overcharging and undercharging, so it is essential to choose a compatible charger to avoid any potential damage. In addition, different types of lithium batteries may have different charging requirements.

How do you charge a battery?

Ensure the battery and charger are at room temperature (around 20°C) for optimal charging efficiency. Remove the battery from the device or equipment if possible for better heat dissipation during charging. Connect the battery to the charger and initiate the charging process.

Should I use a compatible charger when charging a lithium battery?

Using compatible chargers is critical when charging lithium batteries: Voltage Regulation: Lithium batteries require specific voltage levels during charging. Incompatible chargers may supply incorrect voltages, risking overheating or

battery failure.

How should a lithium battery pack be charged?

It is recommended that lithium battery packs be charged at well-ventilated room temperature or according to the manufacturer's recommendations. Avoid exposing the battery to extreme temperatures when charging, as this can affect its performance and life.

How to charge the base station lithium battery



How to Charge A Lithium Battery [7 Ways]

Apr 11, 2025 · Find out how to charge your lithium battery safely and efficiently. There are seven most popular methods for charging lithium batteries. Besides, ...

[Get Started](#)

How to Charge a Lithium-ion Battery? Detailed ...

Jul 14, 2024 · Charging a lithium-ion battery isn't rocket science, but it's close! Follow these easy tips to make sure your battery stays strong and powers ...

[Get Started](#)



Optimal Lithium Battery Charging: A Definitive ...

Mar 12, 2024 · Unlock the secrets of charging lithium battery packs correctly for optimal performance and longevity. Expert tips and techniques revealed in our ...

[Get Started](#)

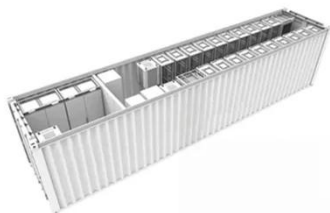


Battery Care for Trimble Receivers, Scanning Stations, & 3D ...

Jun 23, 2022 · Trimble® GNSS receivers, total stations, and laser scanners all utilize Lithium ion (Li-ion) batteries. Li-ion batteries provide 300-500 discharge/charge cycles, which equals a life ...



[Get Started](#)



How to Charge a Lithium-Ion Battery Properly: Step-by-Step ...

Nov 15, 2024 · Use a compatible lithium-ion battery charger designed for the specific battery chemistry and voltage. Ensure the battery and charger are at room temperature (around 20°C) ...

[Get Started](#)

Li-Ion Cells: Charging and Discharging Explained ...

Jun 12, 2024 · It's crucial to know how to charge and discharge li-ion cells. This article will provide you with a guide on the principles, currents, voltages, and ...

[Get Started](#)



Best Practices for Charging Li-ion Batteries



5 days ago · Charging Li-ion batteries is crucial to running small devices like phones or big machines like electric buses, cars, and more. It is essential to ...

[Get Started](#)

Charging lithium-ion batteries

May 7, 2025 · Discover the correct way to charge lithium-ion batteries. Follow our tips for efficient charging and improved battery life for your tools.

[Get Started](#)

ESS



Ultimate Guide: How to Charge a Lithium Battery ...

May 7, 2025 · Discover how to charge a lithium battery safely: choose the appropriate charger, follow the correct steps, avoid extreme charging states, ...

[Get Started](#)

What Is the Best Charging for a Lithium Battery?

Jun 1, 2025 · Lithium batteries power everything from smartphones to electric

vehicles, yet improper charging remains a top cause of premature failure, ...

[Get Started](#)



How to charge and use base station lithium batteries

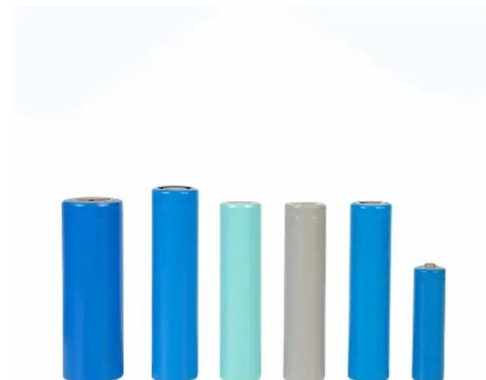
What are the best practices when charging lithium-ion batteries? To ensure optimal performance and safety when charging lithium-ion batteries, adhere to the following best practices: Use ...

[Get Started](#)

How to Properly Connect and Charge Lithium Batteries?

Apr 11, 2025 · Lithium batteries require specific charging protocols to ensure safety and longevity. Proper connections involve verifying polarity, using compatible chargers, and monitoring ...

[Get Started](#)



How to Charge Lithium Batteries: Complete Guide to Safe ...



Jul 30, 2025 · Learning how to charge your lithium batteries properly is essential for maximizing battery performance, safety, and lifespan. Lithium charge requires a two-stage process ...

[Get Started](#)

How to Charge a Li-Ion Battery Correctly and ...

Jun 14, 2025 · Some lower-cost commercial chargers could use the simple "charge-and-run" approach that will charge a lithium-ion battery in an hour or ...

[Get Started](#)



How to Charge Lithium Batteries: Complete Guide to Safe ...

Jul 30, 2025 · Proper charging requires using the right chargers, monitoring temperature, avoiding overcharging, and maintaining charge levels between 20-80% for optimal longevity. ...

[Get Started](#)

How to Charge Portable Power Station: Methods ...

Jan 8, 2025 · Wondering how to charge

portable power station on the go?
Discover the different methods to ensure
you stay powered for any adventure ...

[Get Started](#)



How to Charge Lithium Batteries: Best Practices for ...

Sep 12, 2024 · What Are the Best Practices for Charging Lithium-Ion Batteries? How Important Is It to Use Compatible Chargers? Why Should You Prevent Overcharging? What Conditions ...

[Get Started](#)

How to charge lithium battery?

May 5, 2025 · Connect the charger: Plug the charger into a power outlet and then connect it to the device or the lithium - ion battery pack. Some devices may ...

[Get Started](#)



Charging a Lithium Iron Phosphate (LiFePO4) ...

Jan 18, 2024 · Discover the benefits of

LiFePO4 batteries and follow a step-by-step guide to efficiently charge your Lithium Iron Phosphate battery.

[Get Started](#)



Lithium battery charging best practices (How to & other tips)

To charge a base station lithium battery, you can follow these general guidelines: Use the Manufacturer's Charger: Always use the charger recommended by the manufacturer to ensure ...

[Get Started](#)



The Complete Guide to Lithium Battery Charging ...

Jan 24, 2024 · It should go without saying, but a battery is only as useful as its charging capabilities--and your understanding of your charging needs. To get ...

[Get Started](#)

BU-808: How to Prolong Lithium-based Batteries ...

Oct 11, 2023 · Table 2 estimates the

number of discharge/charge cycles Li-ion can deliver at various DoD levels before the battery capacity drops to 70 ...

[Get Started](#)



How to Charge a Lithium Battery Like a Pro in 2025?

Want to know how to charge a lithium battery like a pro? Discover 7 charging methods and additional tips for safe, efficient, and long-lasting performance.

[Get Started](#)

Lithium battery charging best practices (How to ...

Aug 19, 2025 · The important difference between Lead-Acid and Lithium is that each charged Lithium battery can charge faster, run longer, and last for many ...

[Get Started](#)



HOW TO PROPERLY CHARGE LITHIUM BATTERIES

How to charge and use base station lithium batteries To charge a base



station lithium battery, you can follow these general guidelines: Use the Manufacturer's Charger: Always use the charger ...

[Get Started](#)

How to Charge a Portable Power Station?

Oct 28, 2024 · Portable power stations have become essential for those who need reliable, on-the-go power. Whether you're camping in remote areas, ...

[Get Started](#)



ESS



Base station lithium battery charging

Lithium 40v Charging Base The 2-amp rapid charge battery charging station charges battery back to full charge in 2-1/2 hours. Item #: LFV-CB Availability: Available Due to the potentially ...

[Get Started](#)

Overview of the Roomba 500 and 600 series battery and charging

Note: Refresh charge is not applicable to a Li-Ion battery. When the charging cycle is complete, the CLEAN indicator on Roomba® should illuminate solid green, or will illuminate solid green ...

[Get Started](#)



How To Use Lithium Batteries For Your Ham ...

Jun 21, 2021 · Without a reliable ham radio power source, your system won't take you very far. Lithium batteries - the best choice for ham radio batteries.

[Get Started](#)



Charge a Rechargeable Battery , Hunter Douglas ...

Dec 3, 2024 · Learn how to charge Hunter Douglas rechargeable batteries using the correct method for your product. Instructions are included for both external ...

[Get Started](#)



Best Practices for Charging Li-ion Batteries

Jan 9, 2024 · What are lithium-ion batteries, anyway? Let's talk about their



use cases and how to best maintain their charge for a long lifespan. Lithium-ion ...

[Get Started](#)

How to Charge Lithium Batteries: Best Practices for ...

Sep 12, 2024 · Charging lithium batteries correctly is crucial for maximizing their lifespan and ensuring safety. Following best practices can help prevent damage, enhance performance, ...

[Get Started](#)



HOW TO PROPERLY CHARGE MY LITHIUM

How to charge and use base station lithium batteries To charge a base station lithium battery, you can follow these general guidelines: Use the Manufacturer's Charger: Always use the charger ...

[Get Started](#)

How to Properly Charge a Lithium Battery?

Aug 1, 2025 · There are several best

practices for charging a lithium battery, including: Ensuring Compatibility and Safety: The use of appropriate charging equipment, such as chargers that ...

[Get Started](#)

Our Lifepo4 batteries can be connected in parallel and in series for larger capacity and voltage.



5 Easy Mistakes to Avoid When Charging ...

Jul 6, 2023 · Are you making these mistakes when charging your lithium-ion batteries? You could be doing significant harm to your batteries and devices.

[Get Started](#)

Contact Us

For catalog requests, pricing, or partnerships, please visit:
<https://www.persianasaranda.es>