

SolarInvert Energy Solutions

How to communicate between base stations



Overview

How do base stations work?

Base stations use antennas mounted on cell towers to send and receive radio signals to and from mobile devices within their coverage area. This communication enables users to make voice calls, send texts, and access data services, connecting them to the wider world. Network Management and Optimization.

Why are base stations important in cellular communication?

Base stations are important in the cellular communication as it facilitate seamless communication between mobile devices and the network communication. The demand for efficient data transmission are increased as we are advancing towards new technologies such as 5G and other data intensive applications.

What is a base station in a cellular network?

Base Stations A base station, often housed within a cell site, is the central point in a cellular network where signals are transmitted and received from mobile devices. It consists of electronic equipment, including transceivers, antennas, and signal processors, that manage the communication within a specific geographical area or “cell.”.

What is a base station?

What is Base Station?

A base station represents an access point for a wireless device to communicate within its coverage area. It usually connects the device to other networks or devices through a dedicated high bandwidth wire of fiber optic connection. Base stations typically have a transceiver, capable of sending and receiving wireless signals;.

What is a signal transmission & reception base station?

Signal Transmission and Reception Base stations use antennas mounted on cell towers to send and receive radio signals to and from mobile devices within their coverage area. This communication enables users to make voice calls, send texts, and access data services, connecting them to the wider world.

What are base stations & cell towers?

Base stations and cell towers are critical components of cellular communication systems, serving as the infrastructure that supports seamless mobile connectivity. These structures facilitate the transmission and reception of signals between mobile devices and the wider network, enabling voice calls, text messages, and data services.

How to communicate between base stations



Exploring the Xn Interface Between Base Stations in 5G ...

Jan 18, 2025 · One of the fundamental components of 5G architecture is the integration of base stations. These base stations serve as the vital link for user equipment (UE) to access network ...

[Get Started](#)

The Inner Workings of Steam Base Stations: A ...

Mar 13, 2025 · What are the key differences between different models of steam base stations? Different models of steam base stations mostly vary in their specifications, functionality, and ...

[Get Started](#)



How does a phone connect to a base station? - ...

Feb 1, 2020 · How does a phone connect to a base station? Mobile phones work by sending and receiving low power radio signals. The signals are sent to and received from antennas that are ...

[Get Started](#)



Space Communications: 7 Things You Need to Know

Oct 6, 2020 · NASA's Laser Communications Relay Demonstration (LCRD) will showcase the benefits of optical communications. The mission will relay data between ground stations in ...

[Get Started](#)



Communicating with satellites -- Science Learning Hub

Mar 27, 2013 · Kelvin Barnsdale explains how satellites use radio signals to communicate with ground stations and how satellite dishes are shaped to reflect these signals into a single point. Select here to view

[Get Started](#)

Starlink Ground Station: Backbone of Satellite ...

Jun 28, 2024 · These ground stations are pivotal in bridging the gap between the satellites in orbit and the terrestrial internet infrastructure. In this article, we will ...

[Get Started](#)



Types of Base Stations

Jul 23, 2025 · Base Station A base station is a component that provides



functionality as a gateway for any wireless device to communicate or access ...

[Get Started](#)

What is a Base Station?

Jan 18, 2022 · 5G base stations have begun to grow in importance recently, if recent deals inked between top telecom companies is any indication. With 5G ...

[Get Started](#)



What Are Base Station Antennas? Complete Guide

Nov 20, 2024 · Base station antennas are also known as cell site antennas and cellular antennas, and they are typically mounted on a tower or rooftop and ...

[Get Started](#)

What is a base station?

Mar 4, 2021 · Base stations in other uses
Two-way radio, also known as citizens band radio or ham radio, also use base

stations. These are typically fixed ...

[Get Started](#)



How does a base station controller work?

Posted on September 6, 2022 Author
Table of Contents [hide] 1 How does a base station controller work? 2 What is the use of BTS in cellular network architecture? 3 Which control the ...

[Get Started](#)

How do communication base stations work

Coverage areas depend on antenna height, power, and topography, while handover processes ensure seamless transitions between base stations. Connected to a core network via backhaul ...

[Get Started](#)



HOW DO Base Stations Track Controllers: A Comprehensive

...



May 10, 2024 · To track controllers, base stations rely on a combination of signals, triangulation techniques, and advanced algorithms that enable them to accurately determine the location of ...

[Get Started](#)

How do communication base stations work

Introduction Communication base stations, also known as cell towers or mobile phone masts, are essential components of wireless communication networks. They allow mobile devices to ...

[Get Started](#)

HEAT DISSIPATION

Cold aisle containment, making optimal refrigeration effect;



How Mobile Phones Communicate: Easy-to ...

Apr 19, 2025 · Base stations host the electronic equipment to transmit and receive signals, while masts raise these stations high in the sky to maximize ...

[Get Started](#)



The Common Misconceptions Around Base and ...

Nov 14, 2022 · A practical guide to

understanding how base and rover systems collaborate in RTK surveys to deliver precise real-time positioning.

[Get Started](#)



DO Base Stations Need to See Each Other? The

May 15, 2024 · Line of sight refers to the unobstructed path between two base stations, allowing for direct communication and transmission of signals. This direct path ensures a strong and ...

[Get Started](#)

X2 X2 interface

Aug 7, 2023 · The X2 interface is an important interface used in Long-Term Evolution (LTE) and 5G networks to enable communication and coordination between neighboring base stations, ...

[Get Started](#)



HOW DO Base Stations Track Controllers: A Comprehensive

...



May 10, 2024 · Overall, the tracking of controllers by base stations plays a critical role in numerous applications ranging from telecommunications to transportation systems. It enables ...

[Get Started](#)

Base Stations and Cell Towers: The Pillars of ...

May 16, 2024 · Base stations and cell towers are critical components of cellular communication systems, serving as the infrastructure that supports seamless ...



[Get Started](#)



BSIC (Base Station Identity Code)

Mar 4, 2023 · BSIC (Base Station Identity Code) is a unique identifier used in GSM (Global System for Mobile communications) networks to differentiate ...

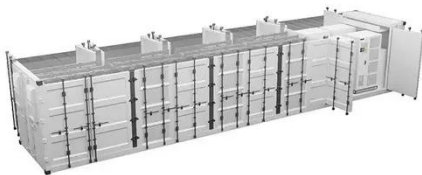
[Get Started](#)

GPS Rover and Base: For All- Important Accuracy, ...

Aug 30, 2021 · Rovers and base stations have been around and used in our

industry for a long time. When paired with the GPS Real-Time Kinematic ...

[Get Started](#)



Starlink Network Architecture: User Terminal, Satellite, ...

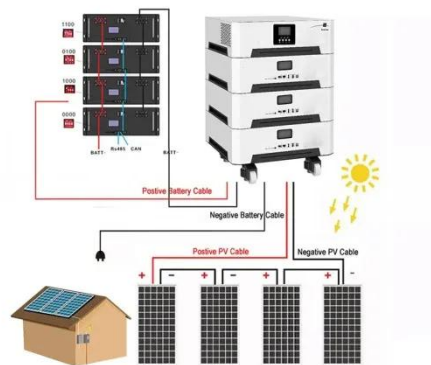
Nov 20, 2024 · The phased array antennas enable dynamic beam steering, allowing the satellites to communicate with different ground stations and provide seamless coverage.

[Get Started](#)

TETRA Radio System Tutorial: Trunking, Frame, Frequency

Mobile Stations (MS): These are the handheld, vehicle-mounted, or fixed radios used by individual users. MSs communicate with base stations and can operate in direct mode (DMO) or trunked ...

[Get Started](#)



DO Base Stations Need to See Each Other? The

May 15, 2024 · These devices are



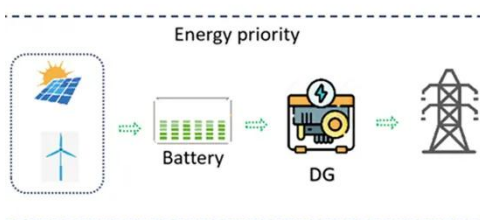
strategically placed between base stations, acting as intermediaries to transmit signals between them. By installing repeaters in locations with a ...

[Get Started](#)

Space Explained: What is a satellite ground station?

6 days ago · Ground stations also incorporate modems and terminal equipment to ensure compatibility between the ground stations and our communications ...

[Get Started](#)



Intercom Systems: All of Your Questions ...

May 1, 2025 · Intercom base stations
Intercom system base stations enable visitors outside a building to communicate with visitors inside a building. The ...

[Get Started](#)

Solved: Satellites are used to communicate between base stations ...

Satellites are used to communicate between base stations at different places on Earth. only (a) (i) Complete the diagram below to show how base station A communicates with base station B. ...

[Get Started](#)



What is a base station and how are 4G/5G base ...

Aug 16, 2022 · What is a base station and how are 4G/5G base stations different? Base station is a stationary trans-receiver that serves as the primary hub for ...

[Get Started](#)

How Do Base Stations Communicate with Each Other?

Aug 13, 2025 · Base stations communicate with each other through a wireless communication protocol such as Wi-Fi, Bluetooth, LTE, or other cellular networks. They can also communicate ...

[Get Started](#)



Base Stations

Jul 23, 2025 · The present-day tele-space is incomplete without the base stations as these constitute an important part of



the modern-day scheme of wireless ...

[Get Started](#)

Understanding How a Mobile Network Works

Aug 15, 2025 · It acts as a bridge, managing inter-network communication. Backhaul Network: The backhaul network is the link between the base stations and the core network. It carries ...

[Get Started](#)



What Is the Role of a Base Station in Wireless Communication?

Jun 27, 2025 · Base stations are critical components in wireless communication networks, serving as the intermediary between mobile devices and the core network. They play a vital role in ...

[Get Started](#)

Understanding Base Station Controller Architecture: A ...

Oct 3, 2024 · A base station controller (BSC) is a vital component in the mobile telecommunications network that acts as the central hub for communication between multiple ...

[Get Started](#)



Satellite Ground Station Basics , RF Wireless World

Explore the fundamentals of satellite ground stations, including their architecture, receiving and transmitting processes, and key specifications.

[Get Started](#)

Satellite Communication Protocols and Ground ...

Mar 26, 2024 · Ground stations leverage a variety of connectivity technologies, such as RF communication, fiber optic links, and microwave links, to facilitate ...

[Get Started](#)



What is a Base Station in Telecommunications?

What is a Base Station? A base station is a critical component in a



telecommunications network. A fixed transceiver that acts as the central ...

[Get Started](#)

Contact Us

For catalog requests, pricing, or partnerships, please visit:
<https://www.persianasaranda.es>