

SolarInvert Energy Solutions

How to measure current in lithium battery station cabinet



Overview

To measure current, first disconnect the battery from any load. Set your multimeter to DC current mode and select an appropriate range based on expected current draw. How do you measure a battery's internal resistance?

There are two methods for measuring a battery's internal resistance: the AC method and the DC method. In the DC method, the battery is discharged at a constant current, and the internal resistance is calculated from the discharge current value and the voltage drop as measured at specific times.

Why is accurate AMP measurement important for lithium-ion batteries?

By examining factors such as voltage spikes, harmonics, or distortion, you can identify potential issues that may affect the stability and reliability of the system. In conclusion, accurate amp measurement is paramount for maintaining the efficiency and safety of lithium-ion batteries.

Why is ampere measurement important for lithium-ion batteries?

At [Our Company], we understand the critical importance of accurate ampere (amp) measurement when dealing with lithium-ion batteries. These batteries, renowned for their high energy density and durability, power a vast array of electronic devices from smartphones to electric vehicles.

How to choose a battery test system?

In addition, it is necessary to choose a measurement system that meets the battery's voltage. The measurement system's maximum input voltage should be about 5 V for cell testing and about 1000 V at the maximum for testing of EV battery packs. Caution is necessary concerning the input voltage rating. Figure 33.

How is a battery impedance calculated?

In the AC method, the impedance is calculated from the current and voltage change when an AC signal is applied to the battery. By contrast, in the DC

method, the resistance value is calculated based on the voltage change and current either immediately after the start of the test or after discharge stops.

How do you measure the stability of a power amplifier?

To measure amp average current for stability, use specialized equipment like multimeters or power analyzers. Assess the average current consumption and analyze the waveform characteristics to evaluate stability. Testing the stability of a power amplifier or measuring motor current are common applications of this process.

How to measure current in lithium battery station cabinet



How to Accurately Measure the Capacity of Lithium Batteries

Aug 7, 2025 · Use the constant current discharge method with proper tools and controlled conditions to measure lithium battery capacity accurately and reliably. Prepare batteries ...

[Get Started](#)

How to measure the parameters of lithium battery pack

Our range of products is designed to meet the diverse needs of base station energy storage. From high-capacity lithium-ion batteries to advanced energy management systems, each ...



[Get Started](#)



How to measure the current and capacity of lithium battery

m battery is by performing what's called a capacity test. This measures how much current the battery can output over a period of time. Capacity tests are typically performed with ...

[Get Started](#)

How to Measure and Calculate Lithium ion ...

Mar 13, 2025 · In this article, you will learn how to measure the capacity of lithium ion batteries, calculate the battery runtime, and understand the key factors ...

[Get Started](#)



How to Accurately Measure the Capacity of Lithium Batteries

Aug 7, 2025 · How to measure capacity of lithium batteries: Use constant current discharge testing with calibrated tools for accurate, reliable battery capacity results.

[Get Started](#)

How to Measure State-of-Charge in Lithium Batteries

Aug 6, 2025 · Measure state-of-charge of lithium batteries using voltage, coulomb counting, impedance, and advanced model-based methods for optimal accuracy and safety.

[Get Started](#)



How to Measure 18650 Lithium-ion Battery Capacity

Mar 29, 2025 · 7V or 3.6V) or discharge current discharge time = battery

To Strive forward No Energy Waste



- ✓ All in one
- ✓ 100~215kWh High-capacity
- ✓ Intelligent Integration

capacity (from 4.2V or 3.6V to 2.7V or 3.0V 18650 Lithium Ion Battery Measures 2: First Step: Powering the battery and ...

[Get Started](#)

How to Install a Lithium Battery System Safely and Efficiently?

Apr 11, 2025 · Installing a lithium battery system is a critical process that demands attention to safety protocols, proper tools, and environmental considerations. Whether integrating with ...



[Get Started](#)



How to measure current in lithium battery cabinet

Coulomb counting, on the other hand, involves measuring the current flowing in and out of the battery and integrating it over time to determine the amount of charge stored in the battery. It's ...

[Get Started](#)

Electrical Measurements of Lithium-Ion Batteries

Feb 26, 2020 · Typical measurement and test instrument includes charge/discharge systems, impedance meters, insulation testers, and high-precision voltmeters. HIOKI offers a variety of ...

[Get Started](#)



How to measure the current of energy storage battery cabinet

Measuring Battery Electric Storage System Capabilities Energy storage capacity is measured in megawatt-hours (MWh) or kilowatt-hours (kWh). Duration: The length of time that a battery ...

[Get Started](#)

Battery Testing Procedure

Jan 10, 2025 · Discover the step-by-step battery testing procedure, including how to measure voltage, capacity, and internal resistance. Using this ...

[Get Started](#)



Li-Ion battery measurement system

Dec 11, 2021 · The aim of this work was to realize a circuit that will measure

voltage, discharge current, temperature and capacity of the Li-ion batteries, ...

[Get Started](#)



Leak Detection of Lithium-Ion Batteries and Automotive ...

Apr 21, 2023 · Why leak test lithium-ion batteries and electrical vehicle (EV) cooling components? Lithium-ion chemistry is not inherently safe as lithium reacts rapidly with water in a single ...

[Get Started](#)



batteries

Jul 21, 2024 · The monitoring IC only allows you to capture the battery's charge-discharge curves and monitor the charge ins and outs. You will need to get ...

[Get Started](#)



How Can You Measure Battery Current Using a Multimeter?

Feb 3, 2025 · How Can You Measure

Battery Current with a Multimeter? To measure battery current, first ensure that your multimeter is set correctly. Turn the dial to the ammeter function ...

[Get Started](#)



How to Measure 18650 Lithium-ion Battery Capacity

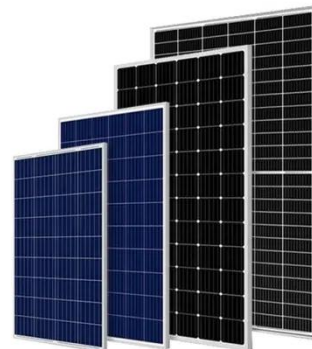
Mar 29, 2025 · 18650 Paracted Cabinet Measures 3: Battery Capacity Tester, usually 4.2V or 3.6V, step 2: discharge battery, calculate time * constant current current = battery capacity,.

[Get Started](#)

Lithium-ion Battery Cabinets - Storemasta

A battery cabinet is a particular type of storage cabinet that reduces the risks associated with lithium-ion batteries. These innovative cabinets create a safer ...

[Get Started](#)



The Ultimate Guide to Lithium-Ion Battery ...

Mar 21, 2025 · Discover the importance of lithium-ion battery storage cabinets



for safe battery storage and charging.
Learn best practices, key features, and
...

[Get Started](#)

Making High Quality Open Circuit Voltage ...

Jun 29, 2022 · OCV During Charging and Discharging Battery charging includes 2 steps Constant Current (CC): Battery is charged with a constant current rate defined by the C-rate Constant ...

[Get Started](#)



How to Measure 18650 Lithium-ion Battery Capacity

Apr 2, 2022 · 7V or 3.6V) or discharge current discharge time = battery capacity (from 4.2V or 3. 6V to 2.7V or 3.0V 18650 Lithium Ion Battery
Measures 2: First Step: Powering the battery and ...

[Get Started](#)

Simplify Voltage and Current Measurement in Battery ...

Dec 23, 2023 · Depending on the output

current requirements, the buck-boost functions can be accomplished several ways; however, two approaches are the most common. For higher ...

[Get Started](#)



How to measure the voltage of batteries in the battery ...

If we assume one terminal of the battery pack is connected to ground, we can measure the open circuit voltage across each cell. This works because DMMs measure differential voltage, or the ...

[Get Started](#)

Application of Hall Current Sensor in Battery Cabinet ...

Abstract: This article analysis the operation principle of hall current sensor, and application in battery management system. Keywords: Hall effect current sensor, Charge and discharge ...

[Get Started](#)



How to Test Lithium Ion Battery with Multimeter

Jan 31, 2025 · Learn how to test a lithium-ion battery using a multimeter for

voltage, current, and overall health in simple steps.

[Get Started](#)



Measure the current of lithium battery pack

What is Lithium Ion Battery Internal Resistance? One approach to calculating internal resistance involves the voltage drop method. Start by measuring the open-circuit voltage of the battery. ...

[Get Started](#)



How to measure the voltage of batteries in the battery ...

How to measure the current of a battery? To measure the current of a battery using a multimeter, follow these steps: Select the DC current function using the dial and keep it at ...

[Get Started](#)

How to Measure 18650 Lithium-ion Battery Capacity

Mar 29, 2025 · The arbitration mode is based on 0.2 magnification, such as

1000 mAh capacity. 18650 Paracted
Cabinet Measures 3: Battery Capacity
Tester, usually 4.2V or 3.6V, step 2: ...

[Get Started](#)



How to measure the current of energy storage battery ...

The easiest and most common way to test a battery's capacity is to measure its voltage and current under load. Once the battery is fully charged first, a load is placed on rack cabinet ...

[Get Started](#)

How to measure the current of energy storage cabinet ...

If you measure the voltage of a lithium-ion battery and it reads below 3.0 volts, it is time to recharge the battery. How can you measure the current (in amps) of a lithium-ion battery with ...

[Get Started](#)



Lithium-Ion Battery Charging Safety Cabinet

Justrite's Lithium-Ion Battery Charging Cabinet is engineered to charge and

store lithium batteries safely, mitigating common risks during charging.

[Get Started](#)



Amp Measurement Using a Multimeter for Lithium Ion Batteries

Dec 3, 2024 · Measuring amps in lithium ion batteries using a multimeter is essential for ensuring optimal performance and longevity. To accurately measure current, follow specific steps that ...

[Get Started](#)



Measurement Instrumentation for Lithium-Ion Battery ...

Aug 29, 2024 · When a cell is being charged, lithium ions are driven through the electrolyte from the cathode to the anode. When the cell is connected to a load, the opposite happens as ions ...

[Get Started](#)



Contact Us

For catalog requests, pricing, or partnerships, please visit:
<https://www.persianasaranda.es>