

SolarInvert Energy Solutions

Huawei base station product power module

**FLEXIBLE SETTING OF
MULTIPLE WORKING MODES**



Overview

The R4850N1 is a digital rectifier that converts the 85~300VAC to 53.5 VDC and possesses the characters of high efficiency, high power density, walk-in start, hot-plug, complete protection, and low noise. What are Huawei base stations?

Huawei base stations are universal and different types of base stations can be configured by flexibly combining basic modules and various cabinets. The basic modules are the baseband unit (BBU) and radio frequency module which includes radio frequency unit (RFU), remote radio unit (RRU), and active antenna system (AAS).

What is Huawei apm30h?

The advanced power module with heat exchanger (APM30H) is used for Huawei wireless products outdoors. It is small and easy to transport. The APM30H supplies DC power to the distributed or separated macro base station in outdoor scenarios. It provides space for both the BBU and transmission equipment.

What are the basic modules of a 3900 series base station?

The basic modules of a 3900 series base station are the baseband unit (BBU), radio frequency units (RFUs), and remote radio units (RRUs). The BBU uses common public radio interfaces (CPRI) and electrical or optical cables to communicate with the RFUs or RRUs. and maintenance, signaling processing, and the system clock.

What type of power does the apm30h support?

Power Specifications The APM30H supports the input power of 220 V AC single-phase, 220/380 V AC three-phase, 110 V AC dual-live-wire, 120 V AC dual-live-wire, and the output power of -48 V DC. When AC power is used, the base station converts AC power into -48 V DC power.

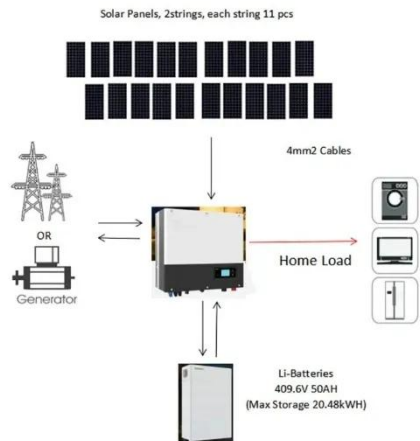
What is a bbu3900 base station?

The 3900 series base stations allow a macro base station and a distributed base station to be deployed at the same site. In this scenario, the RFUs and RRUs are connected to the same BBU3900. This deployment provides flexible networking of base stations, enabling further capacity expansion and evolution in the future. BBU.

What is db3900 dual-mode base station?

DBS3900 Dual-Mode Base Station is the fourth generation base station developed by Huawei. It features a multi-mode modular design and supports three working modes: GSM mode, GSM+UMTS dual mode, and UMTS mode through configuration of different software. In addition, the DBS3900 supports smooth evolution to the Long-Term Evolution (LTE).

Huawei base station product power module



Power-M-5/10/15/20/25/30

May 10, 2015 · Power-M works as an all-in-one energy supplier to fight off blackouts with power generation, energy storage, and seamless switchover in ...

[Get Started](#)

5900 Series Base Station Product Description

Jun 14, 2025 · 5900 Series Base Station Product Description - Free download as PDF File (.pdf), Text File (.txt) or read online for free.

[Get Started](#)



DBS5900 Distributed Base Stations -- Huawei Enterprise

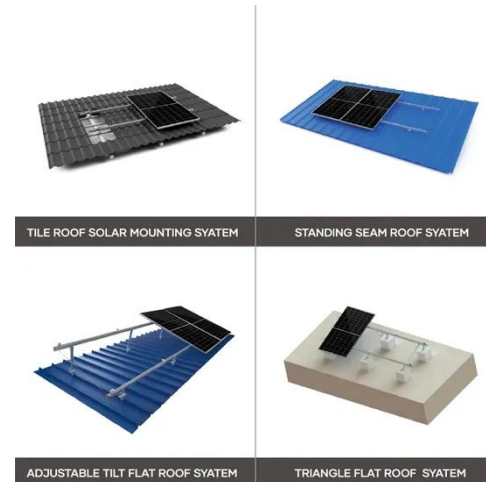
Jul 21, 2025 · DBS5900 Distributed Base Stations The DBS5900 is a wireless access device for the eLTE wireless broadband private network solution. It provides wireless access functions, ...

[Get Started](#)

Huawei APM30H power module with heat ...

The advanced power module with heat exchanger (APM30H) is used for Huawei wireless products outdoors. It is small and easy to transport. The APM30H ...

[Get Started](#)



3900 Series Base Station Product Description V1

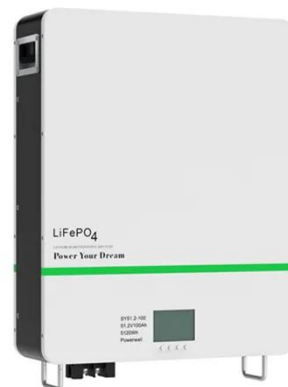
Jul 19, 2012 · With this aim in mind, Huawei developed 3900 series base stations, which are designed based on a high-performance platform and use an optimized hardware and software ...

[Get Started](#)

Base Station Huawei BBU5900 Series 5G LTE ...

The Huawei BBU5900 Series Base Station, equipped with essential modules like UBBPF1, UBBPG2D, UMPTE3, UMPTE5, and UPEUE, stands out as a ...

[Get Started](#)



Huawei to Unveil 10 New Solutions at MWC ...

Feb 21, 2023 · At the Mobile World Congress (MWC) Barcelona 2023,



Huawei will launch and showcase 10 new energy-efficient, high-performance wireless ...

[Get Started](#)

3900 & 5900 Series Base Station Technical Description

...

3900 Series Base Station Technical Description (V100R010C10_07) (PDF)-En
3900 Series Base Station V100R010C10
Technical Description Issue 07 Date
2016-04-29 HUAWEI ...



[Get Started](#)



Huawei Baseband Unit Function Module BBU 02312JXA= WD2MUPEUg Power ...

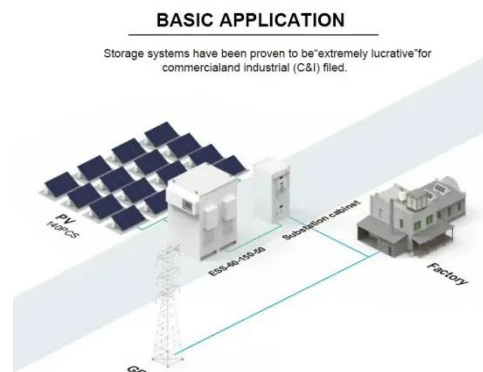
Feature highlights: Huawei BBU Power and Environment Interface Unit (-48V) features a robust design for distributed base stations, ensuring reliable power management and environmental ...

[Get Started](#)

BTS5900 Hardware Description

BTS5900 Hardware Description mainly describes the exterior, configurations, and engineering specifications of the cabinet. The RF modules for distributed base ...

[Get Started](#)



iSitePower-M-5/10/15/20/25/30

Aug 22, 2023 · The information in this document may contain predictive statement including, without limitation, statements regarding the future financial and operating results, future product ...

[Get Started](#)

Huawei Releases New-Generation 5G-oriented ...

Nov 20, 2017 · At the 2017 Global Mobile Broadband Forum in London, Huawei, the world's leading global information and communications technology (ICT) ...

[Get Started](#)



HUAWEI DBS5900 RRU5901 (1800) Distributed ...

DBS5900 adopts a modular structure, and the baseband control unit BBU and



**200kWh
Battery Cluster**

the radio frequency module RRU are deployed separately. It has the ...

[Get Started](#)

Huawei Communication Base Station Power ...

Jul 31, 2025 · Product Description In response to the rapid development of the communication industry and site modernization, Huawei launched a series of ...

[Get Started](#)

HEAT DISSIPATION

Cold aisle containment,
making optimal refrigeration effect;



Huawei Maintains the Top Position in the Global Passive ...

Dec 17, 2024 · In their latest report, the global technology market intelligence firm ABI Research released its 2023 global base station antenna market research report titled "Passive Cellular ...

[Get Started](#)

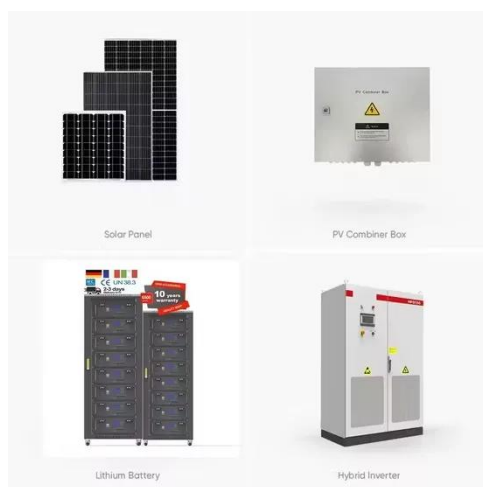


Huawei APM30 power module with heat exchanger

The advanced power module with heat

exchanger (APM30H) is used for Huawei wireless products outdoors. It is small and easy to transport. The APM30H ...

[Get Started](#)



HUAWEI WMPT WD22WMPT 03020JQE QWMD00WMPT00

WMPT is the WCDMA Transmission & Management Unit for BBU in Huawei BTS3900. BTS3900, the indoor macro base station, is applicable to the indoor centralized installation scenario. The ...

[Get Started](#)

3900 Series Base Station Product Description

Jul 31, 2025 · The R4850N1 is a digital rectifier that converts the 85~300VAC to 53.5 VDC and possesses the characters of high efficiency, high power ...

[Get Started](#)



BBU Quick Installation Guide (V100R005C10_04) (PDF) ...

May 16, 2022 · BBU Quick Installation Guide V100R005C10_04 Installing a BBU



a Installing a BBU Subrack NOTE o Wear ESD wrist strap or ESD gloves to prevent electrostatic damage to ...

[Get Started](#)

3900 Series Base Station Product Description

Jul 19, 2012 · Specifically, 3900 series base stations use the newly developed power amplifiers (PAs), provide the temperature control function, and employ the innovated power saving ...

[Get Started](#)



Huawei APM30 power module with heat exchanger

Power Specifications The APM30H supports the input power of 220 V AC single-phase, 220/380 V AC three-phase, 110 V AC dual-live-wire, 120 V AC dual-live-wire, and the output power of ...

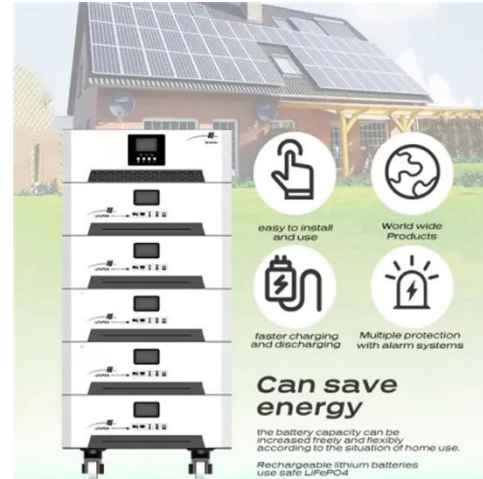
[Get Started](#)

Huawei BTS 3900 Hardware Structure , PDF

The document describes the hardware structure and components of the Huawei

BTS3900 base station system. The key points are: - The BTS3900 system ...

[Get Started](#)



3900 series base station , PDF

The document provides product descriptions for Huawei's 3900 Series Base Stations. It describes the architecture of the base stations which use modular ...

[Get Started](#)



HUAWEI DBS3900 Dual-Mode Base Station Hardware ...

Mar 26, 2022 · DBS3900 Dual-Mode Base Station is the fourth generation base station developed by Huawei. It features a multi-mode modular design and supports three working modes: GSM ...

[Get Started](#)



DBS5900 Product Description

Sep 23, 2024 · The advanced power amplification technology of the AAU5336W achieves a maximum The



Efficient Higher Revenue

- Max. Efficiency 97.5%
- Max. PV Input Voltage 600V
- 150% Peak Output Power
- 2 MPPT Trackers, 150% DC Input Overvoltage
- Max. PV Input Current 16A, Compatible with High-Power Modules

Intelligent Simple O&M

- IP66 Protection Degree: support outdoor installation
- Smart I-V Curve Diagnosis Function: locate PV string faults accurately and automatically detect faults
- DC & AC Type II SPD: prevent lightning damage
- Battery Reverse Connection Protection

Flexible Abundant Configuration

- Plug & Play, EPS Switching Under 10ms
- Compatible with Lead-Acid and Lithium Batteries
- Max. 6 units Inverters Parallel
- ATC Function (Optional): when an arc fault is detected the inverter immediately stops operation

AAU adopts the industry-leading power amplification technology, Huawei ...

[Get Started](#)

Electric Vehicles Charger , Charging Module & Network , Huawei ...

Explore our cutting-edge Charging Module, optimized for Electric Vehicles Chargers and integrated within a robust Charging Network, offering seamless and efficient solutions for your ...



[Get Started](#)

DBS5900 Product Description

Sep 23, 2024 · 5900 series base stations have a modular design. The basic modules are the baseband unit (BBU), Remote radio unit (RRU). The BBU uses common public radio ...

[Get Started](#)



5G-oriented Site Evolution

The total site power consumption will triple. This creates new challenges in

terms of AC input power distribution, DC output power distribution, battery backup, ...

[Get Started](#)



LIQUID COOLING ENERGY STORAGE SYSTEM

EMS real-time monitoring
No container design
flexible site layout



Huawei Rectifier Module of Communication ...

Jun 16, 2025 · Huawei Rectifier Module of Communication Base Station R4850g6, Find Details and Price about Huawei Power Supply from Huawei Rectifier ...

[Get Started](#)

3900 Series Base Station Configuration Principles

Mar 26, 2022 · Introduction to 3900 Series Base Stations 3900 series base stations, which use baseband units (BBUs) and RF modules as the main devices, adopt the industry-leading ...

[Get Started](#)



5900 Series Base Station Product Description

2.7 Macro + Distributed Base Station A
5900 series macro base station



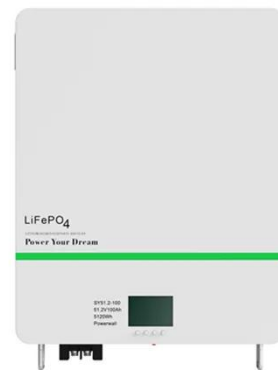
(separated base station) and a 5900 series distributed base station can be deployed at the same site.

[Get Started](#)

5G Power: Creating a green grid that slashes ...

Jun 6, 2019 · New Solutions 5G Power: Creating a green grid that slashes costs, emissions & energy use A joint innovation between China Tower and Huawei, ...

[Get Started](#)



Contact Us

For catalog requests, pricing, or partnerships, please visit:
<https://www.persianasaranda.es>