

SolarInvert Energy Solutions

Kathmandu communication base station wind power damaged



Overview

How does a communication tower damage a base station?

The communication tower and its antenna equipment are responsible for signal transmission and reception, and their damage directly affects the normal operation of the base station. This study mainly considers tower body damage (X 11) and antenna damage (X 12).

Are mobile telecommunication and ISP services still operational in Nepal?

Mobile telecommunication and ISP services were still operational in capital of Nepal (Kathmandu), however mobile network coverage outage and heavy congestion was in common. There were mobile communication site losses due to building collapses and transmission disruptions.

How mobile communications has been reinforced by mobile network operators in Nepal?

however mobile network coverage outage and heavy congestion was in common. There were mobile communication site losses due to building collapses and transmission disruptions. From users' perspective, mobile communications has been reinforced by the mobile network operators by donating free telecommunication services in Nepal.

How many Kathmandu districts are affected?

Initial government reports: 30 out of 75 districts affected in the Western and Central Regions, including Kathmandu Valley districts with densely populated cities, rural and mountainous regions. 14 Districts most affected People killed by district Offices damaged.

What type of damage does a communication base station suffer?

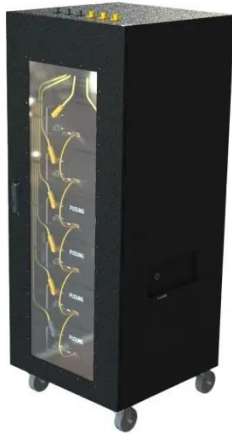
Based on field investigations after the Yangbi earthquake , this paper categorizes typical seismic damage of communication base stations as follows: Communication infrastructure damage is particularly severe, with

building collapse leading to equipment destruction.

How to assess damage to mobile communication facilities during large earthquakes?

Ke et al. proposed a method for assessing damage to mobile communication facilities during large earthquakes. The study analyzed the impact of power outages and evaluated the damage caused by ground motion to base stations using fragility curves .

Kathmandu communication base station wind power damaged



Communication infra in Eastern Tarai in disarray

Aug 14, 2017 · Sovan Adhikari, joint spokesperson of state-owned Nepal Telecom (NT) said that over 100 base transceiver station (BTS) towers of the NT in the eastern region have gone ...

[Get Started](#)

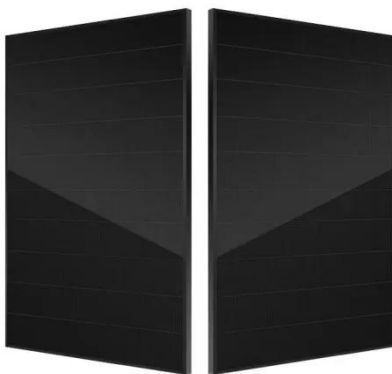
Reliability prediction and evaluation of communication

...

Dec 4, 2023 · Earthquake disasters can cause collapse of houses, damage to communication base stations towers and transmission lines, resulting in the disruption of communication ...



[Get Started](#)



News

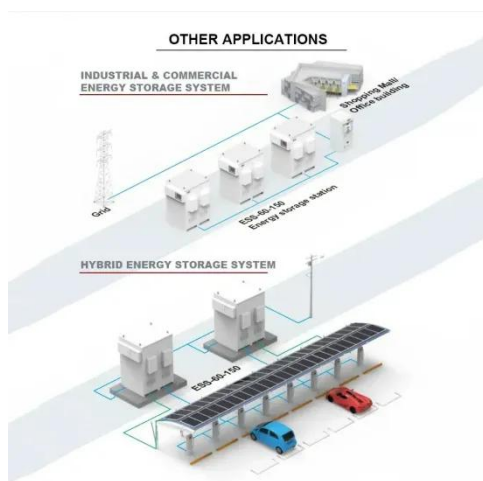
The government plans to integrate and organize the Kathmandu Valley's drinking water supply system. To do this, it will consolidate the Kathmandu Valley Drinking Water Management ...

[Get Started](#)

News

Jul 30, 2023 · Air Conditioner Battery
Booster Pump Charger Cold Storage
Room Electric Power Tools Electric Water
Heater Garbage Disposal Station
Generator Heat Pump Inverter Power ...

[Get Started](#)



News

The Independent Energy Producers' Association, Nepal (IPPAN) has urged the government to make arrangements for restoring electricity infrastructure damaged by the flood that entered ...

[Get Started](#)

News

Jun 22, 2023 · The power generation capacity of these micro hydro power stations ranged from 19 kilowatt to 64 kilowatt. Maangmaya 1 and Maangmaya 2, Thadekhola, Lodamba and ...

[Get Started](#)



IPPAN calls for government initiation to restore damaged power



Jul 10, 2025 · Kathmandu: The Independent Energy Producers' Association, Nepal (IPPAN) has urged the government to make arrangements for restoring the electricity infrastructure ...

[Get Started](#)

News

The decision was made during a meeting of the National Council for Disaster Risk Reduction and Management, held following the massive flood in the Lhendey River that severely damaged ...

[Get Started](#)



Study of wind penetration and it's impacts in Kathmandu ...

Dec 9, 2010 · Integration of wind turbines may have significant impacts on power system operation. Generation of electricity from wind power has received considerable attenti

[Get Started](#)

Post-earthquake functional state assessment of communication base

Dec 1, 2024 · Ke et al. proposed a method for assessing damage to mobile communication facilities during large earthquakes. The study analyzed the impact of power outages and ...

[Get Started](#)



Nepal's Experience in Responding to a Disaster: A

Sep 7, 2020 · A commercial company in USA, instructed its satellite, orbiting at 617km above Earth, to start capturing the affected region to support disaster response efforts in Nepal by ...

[Get Started](#)

News

News - Energy Nepal - Power Kathmandu
- Voltage Stabilizer - Battery - UPS - Heat
Pump - Gree AC - Cold Room - Water
Heater - Solar Power - Wind Power -
Hydro Power - Generator - ...

[Get Started](#)



Impact Analysis of Wind Power System Installation in ...

Feb 14, 2016 · Power injections from wind power can change network power

flows, modify energy losses and voltage profile of the system. Proper location and size of wind power plant in power ...

[Get Started](#)



The earthquake impact on telecommunications infrastructure

Aug 1, 2016 · The 2015 Gorkha earthquake caused considerable damage to the infrastructure sector of Nepal. A significant number of hydropower plants, information and communications ...

[Get Started](#)



Energy storage(KWh)

102.4kWh

Nominal voltage(Vdc)

512V

Outdoor All-in-one ESS cabinet



Green Base Station Solutions and Technology

Mar 20, 2011 · The green base station solution involves base station system architecture, base station form, power saving technologies, and application of ...

[Get Started](#)

Post-earthquake functional state assessment of communication base

Dec 1, 2024 · The proposed method integrates the seismic damage fragility of individual components, Fault tree analysis, and Bayesian network to probabilistically assess the post ...

[Get Started](#)

LIQUID COOLING ENERGY STORAGE SYSTEM

EMS real-time monitoring
No container design
flexible site layout



Cycle Life
≥8000

Nominal Energy
200kwh

IP Grade
IP55



News

Founded in 2001 and based in Qingdao, Shandong province, Huastro began by building communication, power and broadcast television towers. In 2018, after strategic transformation ...

[Get Started](#)

Floods and landslides damage 11 hydropower projects ...

Sep 29, 2024 · Floods and landslides triggered by continuous rainfall have caused significant damages to 11 operational hydropower projects with a total capacity of 625.96 MW, according ...

[Get Started](#)

Lithium battery parameters

Product capacity: 100Ah

Product size: 135*197*35mm

Product weight: 1.82kg

Product voltage: 3.2V

internal resistance: within 0.5



Communication Base Station Energy Power Supply System

The hybrid power supply system of wind



solar with diesel for communication base stations is one of the best solutions to solve this problem. The wind-solar-diesel hybrid power supply system ...

[Get Started](#)

Reliability prediction and evaluation of communication base stations ...

Jun 2, 2023 · To provide communication services to post-earthquake disaster areas, Peer et al. 7 proposed a new multi-hop device-to-device (D2D) communication framework that connects ...



[Get Started](#)



More than 200 killed: What caused the ...

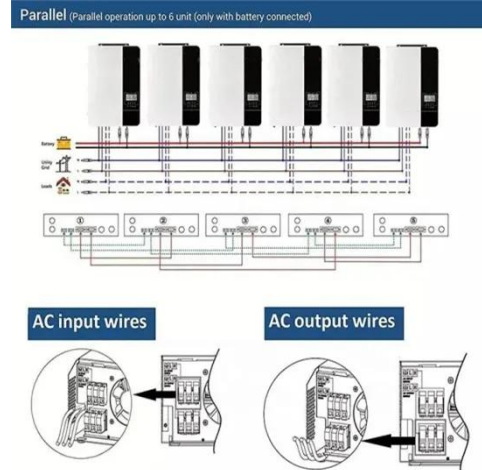
Oct 2, 2024 · More than 200 killed: What caused the devastating floods in Nepal? Working-class riverside communities bear the brunt of Kathmandu's floods, ...

[Get Started](#)

Airborne Base Stations Bring Back Connectivity

Jan 3, 2025 · When a major typhoon swept through Hainan Province in September 2024, Haikou City and Wenchang City suffered heavy damage, transportation was blocked and power and ...

[Get Started](#)



News

Energy Nepal-Complete Power Solution Similarly, the finance ministry has also given its consent to the National Disaster Risk Reduction and Management Authority to set up a temporary ...

[Get Started](#)

2015 GORKHA EARTHQUAKE: EVALUATION OF NEPAL'S ...

May 21, 2018 · Nepal Telecom (NT) - Nepal Doorsanchar Company Limited - has the largest network in the country. They suffered the most damage to their transmission systems, Base ...

[Get Started](#)

Support Customized Product



News

Energy Nepal-Complete Power Solution Before tabling the proposal, Minister Khadka mentioned that around



260 megawatt electricity was disconnected from national transmission system ...

[Get Started](#)

Upper Tamakoshi, several other hydro projects ...

Kathmandu, Sept. 29: Several hydropower projects across the country have been affected due to floods in rivers in the wake of heavy rains. According to the ...



[Get Started](#)



Concerns grow over timely repair of damaged ...

Sep 29, 2024 · National Concerns grow over timely repair of damaged roads
Floods and landslides have blocked major roads in at least 60 places across ...

[Get Started](#)

Observatoin of Building damage patterns in Kathmandu ...

May 17, 2022 · A strong earthquake of magnitude 7.8 Richter scale struck the central part of Nepal on 25th April, 2015 at shallow depth of 15 km. The epicenter was located at Barkpak ...

[Get Started](#)



Telecom operators may face problems in setting ...

May 17, 2015 · Following the Great Earthquake and subsequent aftershocks, telecom service providers might face problems in setting up BTS (Base ...

[Get Started](#)

News

Nepal Telecom has expressed sadness over unauthorized activities causing damage to its BTS towers in Humla district, Karnali Province, disrupting the services provided. The incident ...

[Get Started](#)

Lithium Solar Generator: \$150



How to make wind solar hybrid systems for ...

Wind solar hybrid systems can fully ensure power supply stability for remote



telecom stations. Meet the growing demand for communication services.

[Get Started](#)

News

The pathway to Lapchi was severely damaged by landslides, resulting in a loss of communication with Lapchi. Upper Tamakoshi Hydropower Company has consistently alerted Independent ...



[Get Started](#)

Contact Us

For catalog requests, pricing, or partnerships, please visit:
<https://www.persianasaranda.es>