

SolarInvert Energy Solutions

Lithium battery must match the inverter



easy to install and use

World wide Products

faster charging and discharging

Multiple protection with alarm systems

Can save energy

the battery capacity can be increased freely and flexibly according to the situation of home use.

Rechargeable lithium batteries use safe LiFePO₄

Overview

Lithium batteries, including lithium-ion batteries and lithium iron phosphate (LiFePO₄) batteries, don't necessarily require a special inverter specifically designed for lithium batteries. Are all inverters compatible with all lithium batteries?

Not all inverters are compatible with all lithium batteries. Therefore, it is crucial to ensure that the inverter you choose is designed to work with the specific type of lithium battery you plan to use. Check Manufacturer Specifications: Both the battery and inverter manufacturers typically provide a list of compatible products.

How do I choose a lithium battery for inverter use?

When selecting a lithium battery for inverter use, it is essential to understand the key specifications: Voltage (V): Most inverter systems use 12V, 24V, or 48V batteries. Higher voltage systems are more efficient for larger power loads. Capacity (Ah or Wh): Amp-hours or Watt-hours indicate how much energy the battery can store and deliver.

How does a lithium battery work with an inverter?

It works with inverters by delivering direct current (DC), which the inverter transforms into alternating current (AC) to power home appliances, RV electronics, or off-grid systems. Lithium batteries offer much higher energy density, longer life cycles, reduced weight, and faster charging times than traditional lead-acid batteries.

What are the specifications of a lithium battery inverter?

Inverter Specifications: Charging Current: The inverter's charging current must match your lithium battery's recommended charging current. Exceeding this limit can damage the battery. Operating Voltage: The inverter's operating voltage range should be compatible with the nominal voltage of your lithium battery bank (e.g., 12V, 24V, 48V).

Can lithium batteries be used in inverter-powered systems?

Lithium batteries can be used in a wide range of inverter-powered systems:
Home power backup: Provides energy during power outages and ensures critical appliances stay running. Solar energy storage: Ideal for storing daytime solar generation for nighttime use.

Can a solar inverter be used with a lithium battery?

Integrating a solar inverter with a lithium battery can take your renewable energy setup to the next level. This combination allows for better energy storage, improved efficiency, and greater resilience during power outages. LiFePO₄ batteries are particularly well-suited for solar applications because their thermal stability and long cycle life.

Lithium battery must match the inverter



How Many Batteries for 1000Watt Inverter - ...

Dec 26, 2024 · What Size Battery for 1000W Inverter To determine how many batteries are needed for a 1000W inverter, start by considering the battery ...

[Get Started](#)

Hybrid Inverter and Lithium Batteries: Setup ...

set up communication between lithium batteries and a hybrid inverter with our detailed step-by-step guide. Ensure optimal performance and longevity of your ...

[Get Started](#)



Top 10 Lithium Ion Battery for Inverter: Must Read before ...

Jul 4, 2025 · Find the best Lithium Ion Battery for Inverter--reviews, prices, ratings, pros/cons, FAQs--to power your home efficiently and safely.

[Get Started](#)

How Big of a Battery Do I Need for a 2000 Watt Inverter?

Dec 19, 2024 · 1. Understanding the Power Requirements A 2000 watt inverter is designed to convert DC power into AC power at a maximum output of 2000 watts. To ensure that the ...

[Get Started](#)



How do I know if my solar panels are compatible ...

Apr 18, 2025 · The energy management system must be compatible with the solar inverter and battery system. Solar panel capacity should be matched ...

[Get Started](#)

Mastering Inverter Batteries: Types, Selection, ...

Jun 25, 2024 · Inverter batteries store energy for power outages. This guide helps you understand types, choose the best one, and maintain it well.

[Get Started](#)



- ☒ 100KWH/215KWH
- ☒ LIQUID/AIR COOLING
- ☒ IP54/IP55
- ☒ BATTERY 6000 CYCLES

Can Lithium Batteries Work With Any Type of ...

Jul 21, 2025 · The short answer is no - proper inverter matching is crucial for

optimal performance and safety. Let's examine the key compatibility factors for ...

[Get Started](#)



Calculate Battery Size For Any Size Inverter ...

Mar 3, 2023 · Instructions! Inverter runtime: is the total number of hours you would need to run your load on an inverter Inverter input Volts (V): Are you ...



[Get Started](#)

☒ LIQUID/AIR COOLING

☒ INTELLIGENT INTEGRATION

☒ PROTECTION IP54/IP55

☒ BATTERY /6000 CYCLES



How to Choose the Right Inverter for Lithium Batteries?

Apr 11, 2025 · Lithium batteries require inverters with precise voltage compatibility (e.g., 12V, 24V, or 48V systems) and stable charging profiles. Unlike lead-acid batteries, lithium variants ...

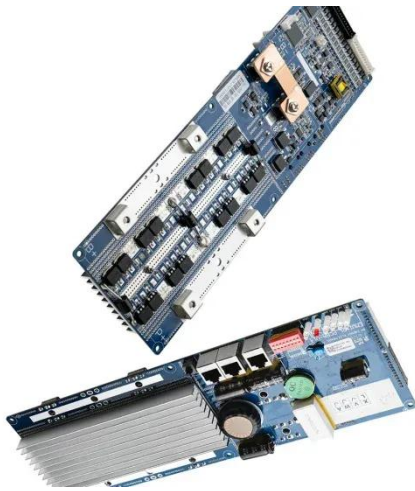
[Get Started](#)

Importance of Compatibility Between Inverter ...

Oct 13, 2024 · Factors such as the

battery's voltage, capacity, and the inverter's output rating need to be carefully matched to avoid compatibility issues. ...

[Get Started](#)



How do I know if my current inverter is ...

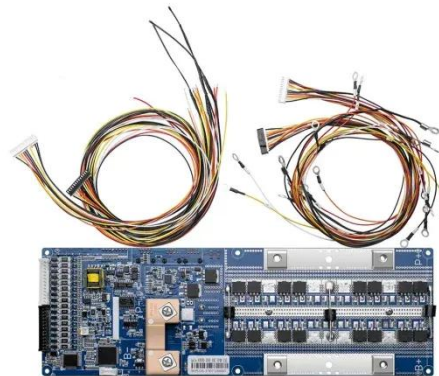
Dec 2, 2024 · 1. Review Inverter Specifications Power Rating: Ensure the inverter can handle the combined power output of your solar array and the ...

[Get Started](#)

Compatibility Analysis Between Lithium Batteries and Inverters ...

May 21, 2025 · Nominal Voltage Alignment: The nominal voltage of the lithium battery pack (e.g., 48V system) must fall within the inverter's input voltage range. GSL Energy's 5 KVA hybrid ...

[Get Started](#)



Why Does Pcs Need To Match The Lithium ...



Jul 21, 2025 · 1. Confirm whether the voltage and current specifications of the lithium battery system match the inverter. The voltage and current ...

[Get Started](#)

Compatibility of Lithium-Ion Batteries with ...

Integrating a solar inverter with a lithium battery can take your renewable energy setup to the next level. This combination allows for better energy storage, ...

[Get Started](#)



Do I Need A Fuse Between Battery And Inverter? Key ...

Feb 15, 2025 · It is crucial to install a fuse between the battery and inverter. A Mega fuse or ANL fuse is recommended because they manage high short-circuit currents well. For large lithium ...

[Get Started](#)

What Size Inverter Do You Need? A Complete ...

Jun 4, 2025 · Choosing the right inverter size is crucial--too small, and your

appliances won't work; too large, and you'll waste money. This guide will help

...

[Get Started](#)



Lithium Battery for Inverter: Pros, Specs, and Tips


Jun 24, 2025 · What is a lithium battery for inverter? A lithium battery for inverter is a rechargeable battery that uses lithium-ion technology to store energy. It ...





[Get Started](#)

Lithium Battery - Hybrid Solar Inverter & ESS Manufacturer

4 days ago · Lithium Iron Phosphate (LiFePO4) Battery 5.12/10.24/15.36kWh , WiFi , IP65 Wall-Mounted Power. Built for Home Solar Storage. The LP2800 Series is a premium wall-mounted ...

[Get Started](#)

 **TAX FREE**


   

Product Model
HJ-ESS-215A(100KW/215KWh)
HJ-ESS-115A(50KW 115KWh)

Dimensions
1600*1280*2200mm
1600*1200*2000mm

Rated Battery Capacity
215KWH/115KWH

Battery Cooling Method
Air Cooled/Liquid Cooled



Do Lithium Batteries Need a Special Inverter?

Aug 12, 2025 · When using lithium batteries for energy storage in

residential or commercial settings, it's crucial to match the battery system's specifications ...

[Get Started](#)



Which Battery Is Best for an Inverter? - leaptrend

Mar 28, 2025 · Which Battery Is Best for an Inverter? Choosing the right battery for your battery inverter is critical for ensuring reliable backup power, whether ...

[Get Started](#)



Matching Solar Inverters with Battery Systems: What You ...

May 20, 2025 · In this in-depth guide, we break down everything you need to know about matching solar inverters with battery systems. From understanding different inverter types ...

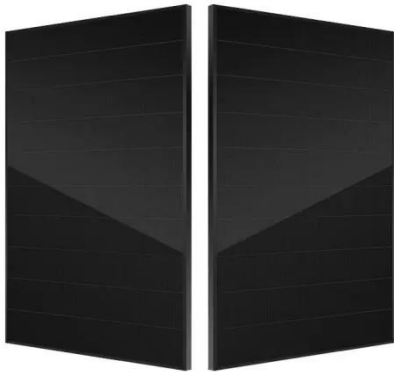
[Get Started](#)

Bad, Better, Best: Battery-Inverter ...

Dec 19, 2023 · In this article, we compare basic and advanced battery

communication, discuss the challenge of 'good' inverter-battery ...

[Get Started](#)



How to Determine the Right Inverter Size for a ...

Determining the right inverter size for a 100Ah battery is essential for ensuring optimal performance and efficiency in your power system. The inverter must ...

[Get Started](#)

Can Lithium Batteries Work With Any Type of ...

Jul 21, 2025 · The Bottom Line While lithium batteries can't work with every inverter, most modern solar and off-grid inverters now offer lithium ...

[Get Started](#)



Are Hybrid Solar Inverters Compatible With All Battery Types?

- ✓ LIQUID/AIR COOLING
- ✓ INTELLIGENT INTEGRATION
- ✓ PROTECTION IP54/IP55
- ✓ BATTERY /6000 CYCLES



May 29, 2025 · Which batteries work with hybrid solar inverters? Learn simple rules on lithium, lead-acid, DIY packs, and why matching BMS to BMS keeps your power safe.

[Get Started](#)

How to Choose the Right Inverter for Lithium Batteries?

Apr 11, 2025 · Answer: To choose the right inverter for lithium batteries, match the inverter's voltage and capacity to your battery's specifications, prioritize pure sine wave inverters for ...

[Get Started](#)



Which Batteries Are Compatible with Deye Hybrid Inverter?

The best batteries for Deye Hybrid Inverters are lithium-based options, particularly LiFePO4, which offer superior performance, safety, and efficiency. By matching voltage, capacity, and ...

[Get Started](#)



Hybrid Inverter and Lithium Batteries: Setup ...

Compatibility is the first and foremost

consideration when setting up communication between a lithium battery and a hybrid inverter. Not all ...

[Get Started](#)



Understanding the Basics of Connecting Lithium ...

Oct 8, 2024 · Connecting a lithium battery to an inverter is crucial for converting the stored DC (Direct Current) energy into usable AC (Alternating Current) for ...

[Get Started](#)

Contact Us

For catalog requests, pricing, or partnerships, please visit:
<https://www.persianasaranda.es>