

SolarInvert Energy Solutions

Multi-axis outdoor power supply specifications



Overview

What is axis Poe midspan 8 port?

AXIS PoE Midspan 8 port is an IEEE 802.3af-compliant power injector. It supports up to eight Axis network devices. For technical specifications please download the datasheet below. Make the most out of your solution. Use the filter to find compatible products.

What is axis tq1808-ve?

With 62 Gb/s switching capacity and 46.13 Mpps forwarding rate, this switch delivers reliable data transfers. Two SFP+ ports are available for 10 Gb/s fiber uplink connections. The two DIN power connectors offer redundancy with separately purchased PSUs. A DIN rail mount is included alongside AXIS TQ1808-VE surveillance cabinet brackets.

How many units can a WCS power supply power?

Power supplies in the WCS Series offer a variety of configurations for powering up to four outdoor units from a single power source. The power supplies provide 24 VAC output for 1-4 units, depending on the model selected. To compensate for voltage losses over long wire runs, 28 VAC outputs are available on all models.

Does Axis tq1808-ve have a DIN rail mount?

A DIN rail mount is included alongside AXIS TQ1808-VE surveillance cabinet brackets. Configure your switch through the AXIS Device Manager software. In addition to being designed to withstand shock and vibrations, this switch can handle temperatures between -40 to 140°F. See any errors on this page?

.

Can a COM-Pact module be combined with a power supply?

rements and your system – and not vice versa. Several individual com-compact

modules, with a choice of power supply modules, regenerative power supply modules, and single-axis and double-axis modules, are combined

Multi-axis outdoor power supply specifications



AXIS T8154 60 W SFP Midspan

5 days ago · AXIS T8154 60 W SFP Midspan is a compact, plug-and-play media converter with PoE. With its integrated power supply, it minimizes the amount ...

[Get Started](#)

AXIS P1465-LE Bullet Camera

3 days ago · This robust, outdoor-ready camera is ideal for a variety of surveillance scenarios. Available with a wide or tele lens, it offers excellent ...

[Get Started](#)



PS Power Supply.book

Jun 26, 2025 · Connect the AXIS PS12 Outdoor Power Supply This guide provides instructions for connecting and preparing the AXIS PS12 Outdoor Power Supply for use. This product is ...

[Get Started](#)



AXIS Q3819-PVE Panoramic Camera

3 days ago · Product support for AXIS Q3819-PVE Panoramic Camera. Where applicable: find software, firmware, manuals, datasheets, technical ...

[Get Started](#)



AZ Series Multi-Axis Drivers

May 15, 2018 · Power Supply Cables (Sold Separately) for Series Multi-Axis Drivers AZ Main Power Cable Control Power Cable Product Name: Product Name: LC03D06A LC02D06A List ...

[Get Started](#)

65779 AXIS Mains Adapter Power Supply Plug

Jul 23, 2025 · Review AXIS Original Mains Adapter 48v Dc 90w Power Supply 4-pin Plug AXIS 65779 FSP090-AFAN2: A High-Performance 48V 90W Mains ...

[Get Started](#)



installing

Jun 26, 2025 · Terminal connectors (Pins 1-22) Cable gland Outer ring The outdoor power supply contains two sets of

terminal connectors to provide easy wiring for alarm inputs/outputs ...

[Get Started](#)



MOVIDRIVE modular - compact multi-axis syst

Sep 20, 2024 · - Up to 30 drives on one power supply module and axis modules - Up to 800 m cable length for the entire machine - Control via MOVI-C® CONTROLLER - A particularly ...

[Get Started](#)



AXIS Q6020-E 50 Hz 4x5MP Outdoor PTZ ...

Outdoor-ready 360° situational awareness camera, comprising of 4 high light-sensitive 0.5" 5MP sensors at 25 fps in H.264/H.265 Zipstream and Motion ...

[Get Started](#)

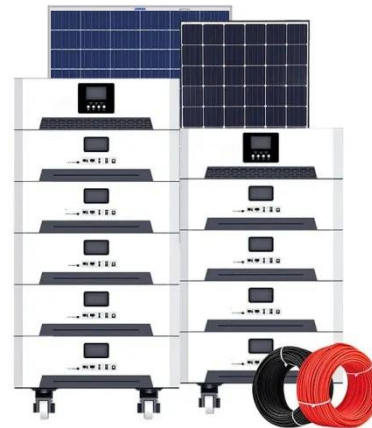


DX5 Product Manual

Sep 28, 2022 · Purpose This manual provides the information required for the Selection, Wiring, Connection, Setup,

Trial Operation, Tuning and Functions of the DX5 Multi Axis Servo Drive ...

[Get Started](#)



Multi-Axis Control Servo Drives Technical ...

Aug 15, 2025 · Looking for product and performance specifications? Need manuals for ArmorKinetix® distributed servo drives or Kinetix® multi-axis ...

[Get Started](#)

Pelco WCS Series Power Supply_spec

Aug 28, 2020 · Power supplies in the WCS Series offer a variety of configurations for powering up to four outdoor units from a single power source. The power supplies provide 24 VAC output ...

[Get Started](#)



AC_DC_Convert.book

Jun 26, 2025 · Connect the AXIS PS12 Outdoor Power Supply This guide



provides instructions for connecting and preparing the AXIS PS12 Outdoor Power Supply for use. This product is ...

[Get Started](#)

????_????????????????

??
??PDF
????DOC ...

[Get Started](#)



AXIS Camera Heater Power Supply

5 days ago · Product support for AXIS Camera Heater Power Supply. Where applicable: find software, firmware, manuals, datasheets, technical specifications and other resources here.

[Get Started](#)

MSD Servo Drive Multi-Axis System

Jul 7, 2021 · Consisting of DC-powered DC-AC Servo Drives and matching

Power Supply Units, the MSD Servo Drive Multi-Axis System of - fers a high degree of solutions expertise and ...

[Get Started](#)



CK3E-series Programmable Multi-Axis Controller ...

Jul 25, 2025 · You must use SELV power supply for the DC power supplies that are connected as the Unit power supplies and I/O power supplies for the CK3E-series Controllers. We ...

[Get Started](#)

AXIS Camera Station 5 Hardware guidelines

Aug 19, 2025 · RAM: 8GB, DDR4
Network: 1 Gbps Multi-server system
above 300 Mbit/s recording bit rate All systems with higher performance requirements should use multiple ...

[Get Started](#)



AXIS Q6000-E PTZ Network Camera

Oct 3, 2021 · Product support for AXIS Q6000-E PTZ Network Camera. Where

applicable: find software, firmware, manuals, datasheets, technical ...

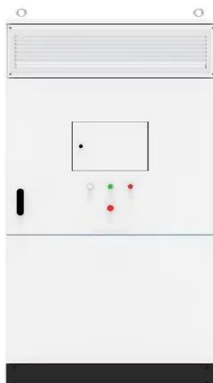
[Get Started](#)



AC_DC_Convert.book

Jun 26, 2025 · This guide provides instructions for connecting and preparing the AXIS PS12 Outdoor Power Supply for use. This product is designed for use with Axis products which have ...

[Get Started](#)



AXIS 30 W Midspan AC/DC

4 days ago · AXIS 30 W Midspan AC/DC is ideal for installations where mains power is not an option. With a power input of either 10-28 V DC or 24 V AC, it ...

[Get Started](#)

CK3E Programmable Multi-Axis Controller/Specifications

Apr 21, 2025 · Programmable Multi-Axis Controller A controller with a width of

only 28.6 mm provides complete control

[Get Started](#)



AXIS T8129 PoE Extender

4 days ago · AXIS T8129 does not require any additional power supply and the connected network camera is fed by a single PoE switch or midspan. It offers

...

[Get Started](#)

Axis Communications D8208-R 8-Port Multi-Gig ...

Buy Axis Communications D8208-R 8-Port Multi-Gig PoE 4 Compliant Industrial Outdoor Managed Switch featuring 6 x Gigabit Ethernet PoE 4 Ports (90W), 2 ...

[Get Started](#)



AXIS PoE Midspan 8 port

Aug 16, 2025 · AXIS PoE Midspan 8 port is an IEEE 802.3af-compliant power injector. It supports up to eight Axis

network devices. For technical ...

[Get Started](#)



AXIS Q6100-E Network Camera

4 days ago · Product support for AXIS Q6100-E Network Camera. Where applicable: find software, firmware, manuals, datasheets, technical specifications and other resources here.

[Get Started](#)



AXIS T8640 PoE+ over Coax Adapter Kit , Axis ...

5 days ago · Maximum range for PoE+ over Coax multi-channel kits (AXIS T8646 or AXIS T8648) being powered by either AXIS T8082 PS57 or AXIS T8085 ...

[Get Started](#)

Axis P3727-PLE: 4MP Multi-Sensor 360° ...

Explore the Axis P3727-PLE Panoramic Camera for 360° coverage with 2MP

channels. Ideal for indoor/outdoor use with day/night functionality and durable

...

[Get Started](#)



AXIS Outdoor Multicable C I/O Audio Power, 3.3', Black

A multi-connector cable that provides I/O connectivity, audio in/out and AC/DC power for cameras. Please note that the audio in/out connection uses a terminal block.

[Get Started](#)

Kempston Controls

Jun 9, 2022 · (5) The 2198-RPxxx regenerative bus supply has no internal shunt resistor. Single-axis Inverter Power Specifications 2198-S312-ERS3 2198-S312-ERS4 192.0 271.5 A duration

...

[Get Started](#)



Power Supplies

Part #: 5500-251 AXIS PS-S ACC Mains Adapter for IR-illuminators, spare part \$ 39.00 Request Quote Part #: 5000-021

AXIS PS12 ACC Mains Adapter, 12V
outdoor/indoor Power Supply. \$...

[Get Started](#)



Contact Us

For catalog requests, pricing, or partnerships, please visit:
<https://www.persianasaranda.es>