

SolarInvert Energy Solutions

Outdoor wireless AP base station installation location selection



Overview

Where should APS be placed in a location ready network?

In a location ready network, APs should not only be placed in the center spaces but also spread across the perimeters and corners of the floor. This helps in improving location accuracy as the likelihood that a device is triangulated by more than 3 APs and at better signal strengths is higher. Use a hexagonal pattern for AP layout.

How many external antenna connectors does the ap-374 access point have?

The AP-374 access point is equipped with six external antenna connectors. The connectors are labeled 2G0, 2G1, 5G0, 5G1, 5G2, and 5G3. External antennas for this device must be installed by an Aruba Certified Mobility Professional (ACMP) or other Aruba-certified technician, using manufacturer-approved antennas only.

What is the difference between ap-374 and 370 series access points?

The 370 Series access point is capable of AC power in the range of 100 - 240 VAC. The power cord or power connector kit is sold separately. The AP-374 access point is equipped with six external antenna connectors. The connectors are labeled 2G0, 2G1, 5G0, 5G1, 5G2, and 5G3.

How far away should an AP be from the ground?

Generally, for APs mounted less than 17 feet from the ground, this may not be a problem as long as the client does not move too far away from the AP and is audible to at least three surrounding APs on the floor. Achieving all the above mentioned recommendations might not be possible in certain deployments.

Where should APS be located in a non-location-ready deployment?

Most non-location-ready deployments are designed such that APs are located in the inner spaces of the floor plan. APs are generally not placed on the perimeters or corners since their coverage cells would bleed outside the floor,

which may not be necessary as the WLAN, in most cases, is not required to serve clients outside the floor boundaries.

How many APS should a WLAN deployment have?

If your use case requires analytics around associated devices, it is recommended to have a mix of APs and AMs (for example, 1 AM for every 3 APs) in your WLAN deployment. Associated devices can probe very infrequently especially if not constantly moving. The following sections describe the ideal AP placement plans.

Outdoor wireless AP base station installation location selection

Wyze Base Station Setup Guide



Jul 10, 2025 · Tap Device Info > Wi-Fi Network. Follow the on-screen steps to finish the setup. Now that your Wyze Base Station is all set up, it's time to add ...

[Get Started](#)

Introduction

Outdoor wireless mesh with AirMesh: Some customers operate a wireless network that is almost exclusively outdoors. Indoor connections can be provided from the outdoor network, usually ...

[Get Started](#)



Best Practices for Deploying Outdoor Access Points

This article outlines the various best practices when deploying an outdoor wireless network and how to correctly select the location of outdoor access points.

[Get Started](#)



A Ubiquiti airMax Point-to-Point and Point-to-Multi-Point

...

Dec 14, 2016 · As a brand synonymous with fixed wireless broadband communications, Ubiquiti airMax provides solutions for short, to long-range connectivity, as Point-to-Point (PtP) and ...



[Get Started](#)



Ap Outdoor Base Station

Our Ap Outdoor Base Station offers exceptional quality within the WiFi Products category. Purchasing WiFi products in bulk ensures cost-effective prices, simplifies logistics, ...

[Get Started](#)

10 Best Outdoor Access Points, Reviews

Sep 18, 2024 · Find the best outdoor access points with expert reviews and comparisons. Find the perfect solution for reliable outdoor networking needs.

[Get Started](#)



The Best Outdoor Wireless Access Points of 2022 ...

Nov 19, 2022 · The following article will



cover the best outdoor wireless access points by providing in-depth analysis for each product and a comprehensive ...

[Get Started](#)

Do you know how to install an outdoor AP?

Dec 13, 2022 · Wireless AP, also known as wireless access point, is divided into two types: "indoor wireless AP" and "outdoor wireless AP" according to the usage scenarios. "Outdoor ...

[Get Started](#)



outdoor-or-indoor - Altai Technologies

The Altai C1 series WiFi CPE/AP is designed as an essential component in the Altai Super WiFi system to extend outdoor Wi-Fi coverage into indoor areas ...

[Get Started](#)

China Wireless Base-station, Wireless Base-station Wholesale

WiFi 6 3600Mbps Wireless Cloud Ap
Outdoor Base Station US\$ 571.5 / Piece
100 Pieces (MOQ) Shenzhen Yunlink
Technology Co., Ltd.

[Get Started](#)



AP-370 Series IG Rev 01

May 3, 2023 · Aruba 370 Series Outdoor Access Points Installation Guide The Aruba 370 Series outdoor wireless access points (AP-374, AP-375 and AP-377) support IEEE 802.11ac Wave 2 ...

[Get Started](#)

1200M Outdoor Wireless Access Point AP290

Jun 4, 2025 · 1200M Outdoor Wireless Access Point The AP290 is a high-performance 11ac 1200Mbps dual-band outdoor wireless access point base ...

[Get Started](#)



Best practices for mounting outdoor access points

May 15, 2024 · This article describes the best practices for mounting outdoor



access points (APs). For full installation instructions, read the ANU B350 Outdoor Access Point Installation Guide.

[Get Started](#)

USER MANUAL

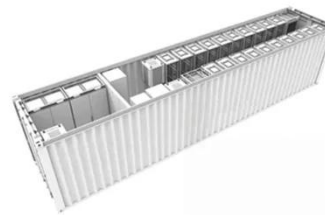
Nov 20, 2019 · The OUTDOOR AP/CPE wireless side is connected to the remote AP (Base-Station) as in Client Infrastructure mode. Between the wireless and LAN is the IP sharing ...

[Get Started](#)



 **TAX FREE**

**1-3MWh
BESS**



Access Point Distance: Calculate Ideal AP ...

6 days ago · Proper access point distance is crucial for WiFi performance. Learn how building materials, usage patterns, and professional site surveys ...

[Get Started](#)

Amazon : UniFi Wireless Base Station XG : Electronics

Jul 16, 2019 · The World's Highest Capacity WiFi AP 4.2 Gbps Real

Aggregate Throughput 1,500 Clients
Capacity for Big Crowds XG Ethernet 10
Gigabit 802.11AC Wave2 Super-Capacity

...

[Get Started](#)



AP Placement and Design

Location accuracy is heavily dependent on AP placement and Radio Frequency (RF) design. This section describes the general guidelines to consider when designing location-ready wireless ...

[Get Started](#)

Dedicated Long-Range Outdoor Wireless Networking ...

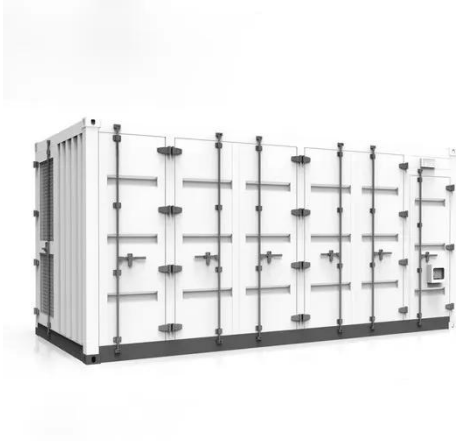
Mar 23, 2020 · Large-area Wireless Coverage Using Base Station combined with Sector Antenna as the Access Point at the central station, and several CPEs as client to build a Point-to ...

[Get Started](#)



Scenario-based WLAN Planning Design for Converter Station

This document describes the scenario characteristics, network planning



solution, and network construction standards in converter station scenarios, providing network planning guidelines.

[Get Started](#)

IAP-277 IG Rev 03

Oct 14, 2020 · Installation Guide The Aruba IAP-277 is an environmentally hardened, outdoor rated, dual-radio IEEE 802.11ac wireless access point. This access point use MIMO (Multiple ...

[Get Started](#)



Research and Implementation of 5G Base Station ...

Oct 28, 2023 · Guoqing Chen, Xin Wang, and Guo Yang Abstract The application requirements of 5G have reached a new height, and the location of base stations is an important factor ...

[Get Started](#)

2.4GHz 802.11N 2x2 Outdoor AP/CPE

Nov 20, 2019 · The OUTDOOR AP/CPE wireless side is connected to the remote

AP (Base-Station) as in Client Infrastructure mode. Between the wireless and LAN is the IP sharing ...

[Get Started](#)



How to set up a base station - Chapter 3: ...

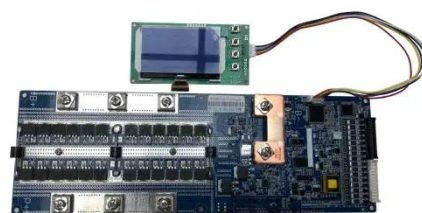
This is the third of a series of articles dealing with how to correctly set up a base station. This article provides details on how to handle the physical installation ...

[Get Started](#)

Automatic Weather Station Installation Location ...

Nov 24, 2024 · Automatic Weather Station Installation Location Selection Guide: Key Steps to Ensure Data Accuracy Automatic weather station s play a crucial ...

[Get Started](#)



Wireless Communication Base Station Location Selection ...

Jun 9, 2024 · 1. Introduction Recently, with the rapid development of wireless



communication technology, the enhancement of wireless network performance is concerned with meeting the ...

[Get Started](#)

Network design challenges and tips for mounting outdoor APs

Aug 18, 2025 · Best practices for mounting outdoor APs consider mitigating factors that only affect outdoor (and not indoor) installations, such as lightning. Designing exterior wireless networks ...



[Get Started](#)



WiFi 6 Outdoor Access Point , MR86 , Cisco Meraki

Information on Cisco Meraki's MR86 outdoor access point and how it differentiates itself from our other outdoor access points to see if it is right for you

[Get Started](#)

Outdoor AP installation recommendations , Knowledge Base ...

It is recommended for AP outdoor installation to protect the AP as well as the indoor equipment electrical surges. Surges that can reach the internal equipment from the outside, or least ...

[Get Started](#)



Step-by-Step Outdoor Access Point Installation Guide

Sep 19, 2024 · Outdoor access points play a vital role in expanding your wireless network over larger distances, offering reliable and high-performance connectivity in areas such as ...

[Get Started](#)

Contact Us

For catalog requests, pricing, or partnerships, please visit:
<https://www.persianasaranda.es>