

SolarInvert Energy Solutions

Power loss from installing photovoltaic panels on the north side



Overview

Can you put solar panels on a north-facing roof?

This maximizes the energy production over the course of the year, through both summer and winter. Sometimes, however, the homeowner will want to add modules on the north-facing roof. This may be for aesthetic purposes, or sometimes because the south-facing rooftop isn't fit for solar. The most common rule-of-thumb is that you simply can't do that.

Should solar panels be pointing south or North?

It's considered common knowledge that you want to point your solar modules south, toward the equator (assuming you are in the northern hemisphere). This maximizes the energy production over the course of the year, through both summer and winter. Sometimes, however, the homeowner will want to add modules on the north-facing roof.

What is the difference between north-facing and south-facing solar panels?

As can be seen in the chart below, for our original reference project in Charlotte, the north-facing array is nearly identical to the south-facing array in the summer months, when production is greatest. While the differences are much larger in the winter months (over 20%), the energy yield during those times is much smaller.

Should solar panels be tilted South?

Ground, flat or pitched roof solar modules in the northern hemisphere will always be tilted south to maximize the amount of radiation that reaches their surface during the day. The angle at which the PV modules will be deflected depends on several factors: – Installation space available.

How do I design a photovoltaic installation other than southern?

When designing installations other than southern, the best solution is to evenly distribute the installation over two slopes and to slightly oversize the

size of the installation so that the actual values of the energy produced by the photovoltaics match the real needs of the farm.

What angle should PV panels be deflected?

The angle at which the PV modules will be deflected depends on several factors: – Installation space available. In the southern part of the country, the optimal slope of the panels is about 20-40 degrees, and in the north – 30-45 degrees.

Power loss from installing photovoltaic panels on the north side



HANDBOOK ON DESIGN, OPERATION AND ...

May 29, 2024 · This Handbook covers "General Practice" and "Best Practice" associated with solar PV system installation and maintenance. "General Practice" refers to general ...

[Get Started](#)

How does photovoltaic power generation ...

In the photovoltaic system, the DC side to use special cables for photovoltaic, AC side to use to meet the output current of the cable. The use of mismatched ...



[Get Started](#)



PHOTOVOLTAIC PANELS

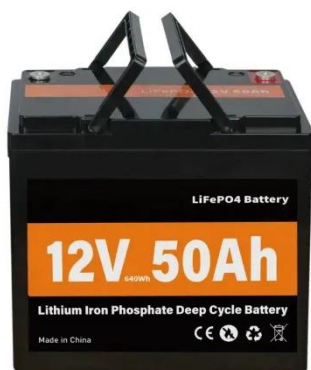
Sep 20, 2024 · Photovoltaic is the term used to describe the direct conversion of light energy (photons) into electrical energy by means of semiconductors. The photovoltaic effect is a ...

[Get Started](#)

Photovoltaic Efficiency: Solar Angles & Tracking Systems

Feb 11, 2020 · Fundamentals Article The angle between a photovoltaic (PV) panel and the sun affects the efficiency of the panel. That is why many solar angles are used in PV power ...

[Get Started](#)



Installation of PV panels on the ground, roof, ...

The choice of location is a critical factor during the installation of photovoltaic panels. Roofs--flat or sloped--are the most common installation sites, offering ...

[Get Started](#)

The environmental factors affecting solar photovoltaic output

Feb 1, 2025 · The global expansion of solar photovoltaics (PV) is central to the global energy transition. As governments aim to triple renewable energy capacity by 2030, solar PV is poised ...

[Get Started](#)



Loss of power in the panels due to temperature

Aug 13, 2021 · The loss of power from



solar panels due to temperature is one of the great enemies of photovoltaic installations. Up to 15% of the energy generated by the photovoltaic ...

[Get Started](#)

Understanding PV system losses: solar panel tilt, ...

Jan 17, 2024 · Looking to understand PV system losses in detail? Part 4 examines solar panel angle efficiency loss, exploring incidence angle, inverter ...

[Get Started](#)



North Facing Solar Panels: Are They Worth It?

How Much Power Loss From North Facing Solar Panels On average a North facing solar panel can reduce its performance by 30% - 40%, and sometimes ...

[Get Started](#)

Solar Panel Installation Philippines for 3kw, 5kw, ...

Jan 17, 2024 · How much is solar panel installation cost for 3kw, 5kw, 2kw, 1kw,

10kw, for 500w solar panel price philippines

[Get Started](#)



Solar panel inclination angle, location and ...

Mar 17, 2016 · Optimization of the inclination, orientation and location of photovoltaic solar panels and solar collectors in a solar installation to ...

[Get Started](#)

Can You Have Solar Panels On A North Facing ...

Aug 28, 2024 · The installation of solar panels on a north-facing roof is an unconventional approach but can yield significant benefits. With the right ...

[Get Started](#)



Solar Panel Angle Calculator: The Definitive Guide

Oct 18, 2024 · Annual energy output vs panel tilt angle, for a South-facing 5 kW



array in Phoenix, Arizona Tilting the panels significantly increases energy ...

[Get Started](#)

Orientation of solar panels

Jul 12, 2023 · North solar panel direction
For those living in the Northern Hemisphere, north facing solar panels is the poorest choice. The panels that face north will receive less direct sunlight ...

[Get Started](#)



How Much Power Loss With North Facing Solar Panels

Dec 11, 2024 · North-facing solar panels can reduce their performance by 30-40% over the course of a year. Panels turned away from the south generate less power, about 15 less when facing ...

[Get Started](#)

Are north facing panels worth it? , DIY Solar Power Forum

Jul 28, 2024 · The only reason I went with north-facing panels was because they



produce during the summer when we're most likely to lose power. All other roof space is in use (i.e.

[Get Started](#)

Lithium battery parameters

Product capacity: 100Ah

Product size: 135*197*35mm

Product weight: 1.82kg

Product voltage: 3.2V

internal resistance: within 0.5



Install solar power

Jan 30, 2024 · Placement of panels It's important to place photovoltaic (PV) panels so they capture the available sunlight most effectively. Do you have ...

[Get Started](#)

How to install solar panels on the north side of ...

Oct 17, 2024 · Selecting the appropriate solar technology carries critical importance when installing panels on the north side of a building. Personal ...

[Get Started](#)



Are Solar Panels On Both Sides Of Roof A Good Idea?

Aug 30, 2024 · Solar Panels On North-Facing Roof Solar panels aren't generally

114KWh ESS




recommended for roofs that face north. They receive the least amount of sun - around half as much as a ...

[Get Started](#)

Which direction is best suited for solar panels

Which direction is best suited for solar panels in Australia? Rooftop Solar Panel Orientation is important while installing rooftop solar.


[Get Started](#)


What is the best angle and orientation for solar ...

Feb 5, 2025 · Discover how to choose the right angle for your solar panels based on your location and seasonal variations. Proper orientation and tilt ensure ...

[Get Started](#)

The Case for West-Facing Solar Panels

Dec 16, 2014 · Most rooftop photovoltaic (PV) panels face south because the

owners of the panels want to generate the most electricity possible. But a ...

[Get Started](#)



Can solar panels be installed on a north facing ...

The limitations of a north-facing roof
When it comes to installing solar panels on a north-facing roof, several limitations need to be considered. Firstly, a north ...

[Get Started](#)

Photovoltaic System On The North Side Of The Roof - Royal

...

Nov 11, 2022 · Photovoltaic on the north side is only worthwhile if you plan to buy your own system. The PV north system is not profitable when rented, since the rent that has to be paid ...

[Get Started](#)



How Much Power Loss With North Facing Solar Panels

Dec 11, 2024 · A 3kWp solar photovoltaic



(PV) system with north-facing panels generates around 1, 145 kWh of electricity annually, while south-facing panels can produce about 1, 361 kWh.

[Get Started](#)

Why the tilt and direction of your solar panels matter

May 3, 2017 · Solar panels are installed differently based on their geographic locations throughout the world. What angle and orientation are best for solar panels in Australia?



[Get Started](#)



What's the Best Angle for Solar Panels?

Nov 1, 2024 · Learn how the orientation and angle of your solar panels can affect just how much electricity they'll produce for you.

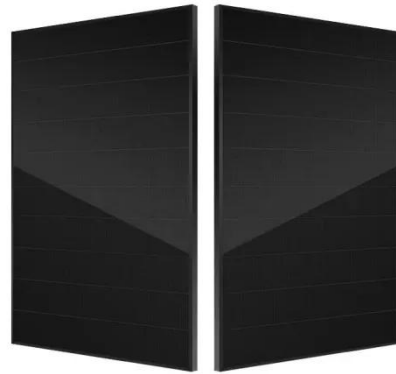
[Get Started](#)

Optimizing Solar System on the North Side ...

Apr 8, 2024 · When Should You Set up the Solar Power System on the North

Side? In Germany, maximizing the use of renewable energy resources ...

[Get Started](#)



How to install solar panels on the north side of a building

Feb 27, 2024 · Focusing on point 1, while north-facing panels typically receive less sunlight, advancements in solar technology, such as bifacial panels, can maximize energy capture in ...

[Get Started](#)

Orientation of solar panels

Jul 12, 2023 · The panels that face north will receive less direct sunlight resulting in significant output losses. This solar panel direction can cut the output by as much as 30%, which may be ...

[Get Started](#)



How does photovoltaic power generation ...

The operating temperature of a PV module has a significant impact on its

output power, and high operating temperatures can lead to power loss. The ...

[Get Started](#)



Transforming Your House: The Power of Solar ...

Oct 28, 2023 · Harness the power of solar panels on the side of your house. Discover the benefits, installation process, and maximizing energy production. ...

[Get Started](#)



Optimizing Solar System on the North Side ...

Apr 8, 2024 · This approach not only maximizes the use of renewable energy sources but also provides a reliable power solution that can adapt to varying ...

[Get Started](#)



Can You Have Solar Panels on a North-Facing ...

Feb 15, 2025 · Yes, you can install solar panels on a north-facing roof, but

efficiency will be lower compared to south-facing panels. However, with tilted

...

[Get Started](#)



Contact Us

For catalog requests, pricing, or partnerships, please visit:
<https://www.persianasaranda.es>