

SolarInvert Energy Solutions

Rooftop photovoltaic panel angle



Overview

What is the optimal tilt angle of photovoltaic solar panels?

The optimal tilt angle of photovoltaic solar panels is that the surface of the solar panel faces the Sun perpendicularly. However, the angle of incidence of solar radiation varies during the day and during different times of the year.

What is the best solar panel angle?

As we've mentioned earlier, your location's latitude plays a major part in determining the best solar panel angle. Across the continental U.S., the optimal tilt can range from 30-45 degrees. However, the further north you live, the more orientation can affect solar panel efficiency.

How do I find the best angle to mount solar panels?

To find the optimal angle to mount your solar panels, take your base tilt from your latitude and subtract it from your slope. Let's take a look at some examples: To reiterate, you'll see the optimal solar panel angle change with the seasons. Most homeowners can expect +/- 15 degrees in the summer and winter.

What temperature should a photovoltaic roof be positioned?

Namely, 0°, 15°, 20°, 25°, 30°, 35°, 40°, 45°. "Due to the difference in solar elevation angle between summer and winter, the daily power generation (Epvr) of parallel overhead photovoltaic roofs is optimal (307.2 W/m²) in summer, and the Epvr decreases with the increase of tilt angle," they explained.

Which roof is best for solar panels?

South-facing solar panel systems almost always generate the most electricity, but east-west roofs can work well for solar, too. The direction is more important than the angle. Angle is rarely a make-or-break factor, and most roof tilts will work fine—though there are some exceptions.

Why do solar panels need a higher tilt angle?

When the sun is lower in the sky, solar panels need a greater tilt angle to receive direct sunlight. When the sun is higher, panels require less tilt. The goal is to catch as much direct sunlight as possible throughout the day and across seasons. So when the sun hangs lower in winter, you'd increase the panel angle.

Rooftop photovoltaic panel angle



The Complete Guide To Rooftop Solar Mounting ...

Feb 17, 2025 · What is Rooftop Solar Mounting? Mounting solar panels on a roof surface to create a solar power system is known as rooftop solar mounting. ...

[Get Started](#)

What is Roof Pitch for Solar Panels?

Nov 29, 2024 · The angle of your roof directly influences how much sunlight your panels can capture, which in turn affects energy production and cost savings. ...

[Get Started](#)



Solar Panel Tilt Angle Calculator

Scroll to the top of this page to use our Solar Panel Tilt Angle Calculator. Simply enter your address and it will provide the optimal angles for each season, as ...

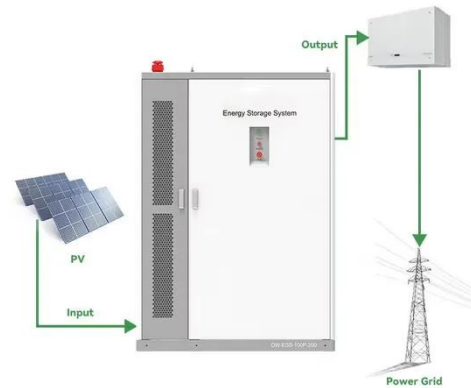
[Get Started](#)



Solar panel inclination angle, location and orientation

Nov 1, 2024 · For maximum output, the sweet spot for solar panels in the continental U.S. is facing roughly south and tilted between 15 and 40 degrees, ...

[Get Started](#)



Installation of PV panels on the ground, roof, ...

The choice of location is a critical factor during the installation of photovoltaic panels. Roofs--flat or sloped--are the most common installation sites, offering ...

[Get Started](#)

How to Determine the Optimal Tilt Angle for Solar Panels: A ...

Jan 28, 2025 · The study's use of real-time data from rooftop PV panels and thorough regression analysis provides technical recommendations for the optimal tilt angle for solar panels on a ...



[Get Started](#)

How to Determine the Optimal Tilt Angle for Solar Panels: A ...

Jan 28, 2025 · For example, research suggests that the optimal tilt angle for



solar panels is approximately 26° for maximizing power output. Furthermore, seasonal adjustments--such as ...

[Get Started](#)

The Science Behind Roof Orientation and Solar ...

5 days ago · Solar panels capture sunlight and convert it into electricity. The amount of sunlight a panel receives is dependent on its orientation relative to ...

[Get Started](#)



How to design PV systems on complex roofs?

However, designing and installing PV systems on complex roofs and knowing how to mount solar panels on roofs can be challenging due to the variety of ...

[Get Started](#)

Optimization of tilt angle for PV in China with long-term ...

Aug 1, 2024 · To address the challenges facing the optimal tilt angle of PV

systems in China, we first quantify the time-varying relationship among solar incidence angle, tilted PV panels, and ...

[Get Started](#)



Optimal tilt angle for solar photovoltaic modules on pitched rooftops

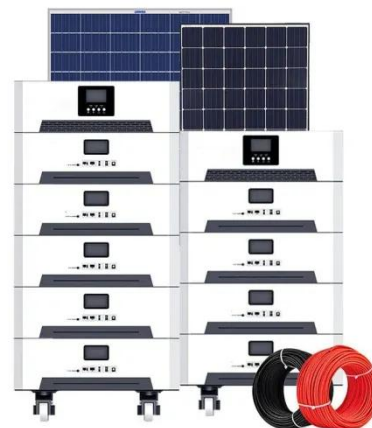
Mar 1, 2022 · In this study, the optimal tilt angle with respect to the module azimuth angle was investigated for the case of low latitude equatorial region. A replicable methodology for ...

[Get Started](#)

Roof Pitch for Solar Panels: Best Angles for ...

Mar 14, 2025 · Discover the best roof pitch for solar panels to maximize efficiency. Learn how angles impact energy production and optimize your solar setup.

[Get Started](#)



Solar Panel Angle Calculator: The Definitive Guide

Oct 18, 2024 · Our guide on solar panel



angles explains how adjusting the tilt can optimize energy production, maximizing solar output.

[Get Started](#)

Optimal Solar Panel Angle: Maximizing Efficiency ...

Feb 5, 2025 · Discover how to choose the right angle for your solar panels based on your location and seasonal variations. Proper orientation and tilt ensure ...

[Get Started](#)



Solar Panel Angle: Definition, and How to Calculate

Aug 19, 2024 · Solar panel angle is the tilt at which a solar panel is installed. Installing solar energy is more cost-effective and energy-efficient if you select ...

[Get Started](#)

What is the best angle for solar panels - Expert ...

4 days ago · When it comes to solar panels, angle matters more than you

think. The right tilt can boost efficiency, lower energy bills, and make the most of ...

[Get Started](#)



Solar Panel Angle By Postcode UK

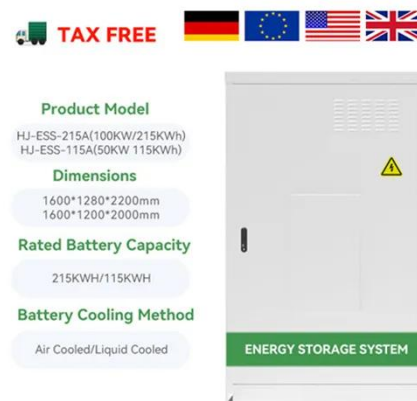
5 days ago · What is the best angle for solar panels in the UK? The best all-year-round angle for PV (photovoltaic) solar panels in the UK is 35-40 degrees. The ...

[Get Started](#)

Optimal tilt angle for solar photovoltaic modules on pitched ...

Mar 1, 2022 · To ensure that solar PV modules are installed at an optimal tilt angle on pitched rooftops, this study proposes a methodology for evaluating the appropriate support structure ...

[Get Started](#)



The Impact of Installation Angle on the Wind ...

May 24, 2024 · In order to explore the

wind load characteristics acting on solar photovoltaic panels under extreme severe weather conditions, based on the ...

[Get Started](#)



How to Determine the Best Solar Panel Angle by ...

Mar 1, 2025 · For maximum power generation, it is essential to place photovoltaic systems at the correct solar panel angle by location to improve sunlight ...

[Get Started](#)



Rooftop photovoltaic solar panels warm up and cool down ...

Oct 7, 2024 · This study looks at the diurnal temperature fluctuations in Kolkata through a model that tests the influence of rooftop photovoltaic solar panels on urban surface energy budgets, ...

[Get Started](#)

Best Angle For Solar Panels and Optimal Roof ...

Sep 24, 2024 · What is the Best Position for Solar Panels in the UK? For optimal energy production in the UK panels need to point South. The next best ...

[Get Started](#)



Wind loads on rooftop solar photovoltaic panels oriented ...

Sep 1, 2024 · Consequently, azimuth angles between the length direction of solar photovoltaic panels and the leading edges of the roof become unavoidable. The design load ...

[Get Started](#)

Design strategies for building rooftop photovoltaic systems:

...

Apr 15, 2025 · By analyzing PV technology performance, assessing the techno-economic aspects of grid-connected rooftop PV systems, and exploring design strategies for building rooftop PV ...

[Get Started](#)



Solar Panel Angle: how to calculate solar panel ...



Apr 3, 2024 · Discover how to calculate the optimum solar panel angle for your solar system according to your location and the season. Two calculation ...

[Get Started](#)

What is the Best Angle for Solar Panels? Maximizing the

...

Determining the ideal tilt angle for solar panels involves considering geographic latitude and the seasonal sun position. As a general rule, the panel tilt angle should roughly equal your latitude ...



[Get Started](#)



What is the optimal orientation and tilt angle for ...

May 13, 2025 · Does it make sense to adapt the tilt of a roof to optimize production? In the case of PV-T, when a roof has a fixed slope, it is not ...

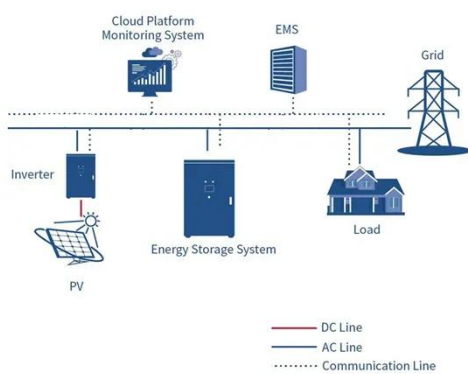
[Get Started](#)

Integrating rooftop PV system in low-cost building plan: A ...

This study examines the feasibility of

integrating enhanced rooftop PV systems into low-cost building designs by optimizing roof pitch angles and empl...

[Get Started](#)



Exploring the optimization of rooftop photovoltaic scale and ...

Apr 15, 2024 · Developing rooftop photovoltaics has become an important pathway towards carbon neutrality globally, but how to rationally implement rooftop photovoltaic development ...

[Get Started](#)

Unleash Solar Power in Singapore: Your Guide to Rooftop Panel ...

5 days ago · Reduce bills, minimize your footprint! This guide details everything you need to know about installing solar panels on your Singapore rooftop, from suitability checks to government ...

[Get Started](#)



Solar Rooftop Design: The Ultimate Guide [2025] ...



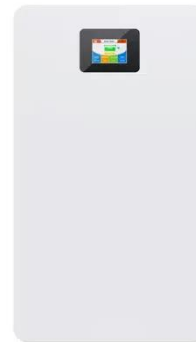
Feb 17, 2025 · Photovoltaic (PV) panels and a backup generator are combined in a hybrid solar rooftop design to produce a consistent and dependable ...

[Get Started](#)

What's the Best Angle for Solar Panels to Get ...

Aug 31, 2023 · When considering a solar panel installation, you'll want to prioritize solar panel direction over angle. While having the optimal tilt can improve ...

[Get Started](#)



Contact Us

For catalog requests, pricing, or partnerships, please visit:
<https://www.persianasaranda.es>