

SolarInvert Energy Solutions

S1 Communication Green Base Station



Overview

What is S1 interface in LTE & 5G?

It is responsible for the signaling and control functions between the base station (eNodeB in LTE or gNodeB in 5G) and the core network (Evolved Packet Core or EPC). The S1 interface is a critical interface in LTE and 5G networks that connects the base station to the core network.

What is a green base station solution?

The green base station solution involves base station system architecture, base station form, power saving technologies, and application of green technologies. Using SDR-based architecture and distributed base stations is a different approach to traditional multiband multimode network construction.

What is S1-C (s1-control)?

S1-C (S1-Control) is the control-plane part of the S1 interface in Long-Term Evolution (LTE) and 5G networks. It is responsible for the signaling and control functions between the base station (eNodeB in LTE or gNodeB in 5G) and the core network (Evolved Packet Core or EPC).

Are green cellular base stations sustainable?

This study presents an overview of sustainable and green cellular base stations (BSs), which account for most of the energy consumed in cellular networks. We review the architecture of the BS and the power consumption model, and then summarize the trends in green cellular network research over the past decade.

What is S1-C interface?

The S1-C interface is used for the exchange of control messages between the base station and the core network elements such as the Mobility Management Entity (MME) and the Serving Gateway (S-GW) in LTE, and the Access and Mobility Management Function (AMF) and the Session Management Function

(SMF) in 5G.

What should a base station do in a wireless communications network?

In a wireless communications network, the base station should maintain high-quality coverage. It should also have the potential for upgrade or evolution. As network traffic increases, power consumption increases proportionally to the number of base stations. However, reducing the number of base stations may degrade network quality.

S1 Communication Green Base Station



Green Communications

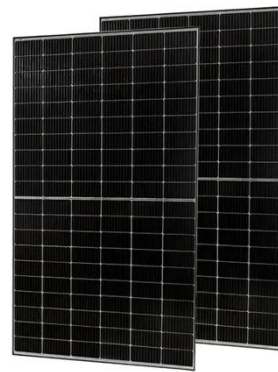
Oct 30, 2023 · The main goal of designing green base stations is to save energy and reduce power consumption while guaranteeing user service and coverage and ensuring the base ...

[Get Started](#)

The carbon footprint response to projected base stations of ...

Apr 20, 2023 · Given that China currently has the largest 5G network in the world (~1.53 million base stations by the end of 2021, Table S1) and that base station number was projected by up ...

[Get Started](#)



Green and Sustainable Cellular Base Stations: An ...

Apr 25, 2017 · Energy efficiency and renewable energy are the main pillars of sustainability and environmental compatibility. This study presents an ...

[Get Started](#)

Carbon emissions and mitigation potentials of 5G base station ...

Jul 1, 2022 · However, a significant reduction of ca. 42.8% can be achieved by optimizing the power structure and base station layout strategy and reducing equipment power consumption.

...



[Get Started](#)



2011 IEEE Online Conference on Green Communications

Dec 1, 2021 · pp. 58-63 Wednesday, September 28 S4: S4: Selected Topics II Green Communications by Demand Shaping and User-in-the-Loop Tariff-based Control Rainer ...

[Get Started](#)

S1-U (S1 for the user plane)

Jun 22, 2023 · In LTE, the S1-U interface is established between the eNodeB (eNB), which serves as the base station in LTE, and the Serving Gateway (S-GW) in the EPC. In 5G, the S1-U ...

[Get Started](#)



HyCell: Enabling GREEN Base Station Operations in ...

Nov 12, 2021 · Propose a software-

Test certification
CE FCC



defined radio access network architecture to enable GREEN BS operations. Propose a separation scheme of the decoupled air interface, and the BS ...

[Get Started](#)

Avire , Leaders In Lift Safety & Communications

2 days ago · AVIRE is a market leading and global manufacturer of light curtains, displays, emergency telephones, cellular communication and monitoring ...

[Get Started](#)



Relay Base-Station Handover in a 5G Environment

Nov 2, 2017 · Increasing data-delivery throughputs for UE: The deployment of relay nodes can increase the density of base stations so that users have better signaling quality and network ...

[Get Started](#)

Green Wireless Communication , Wireless Personal Communications ...

May 16, 2025 · Green networking solutions help to reduce energy consumption by integrating energy-efficient network devices for a wide range of tasks and communication areas. This ...

[Get Started](#)



✓ TELECOM CABINET

✓ BRAND NEW ORIGINAL

✓ HIGH-EFFICIENCY

Energy-Efficient Base Stations

Jul 24, 2015 · Energy saving potential of integrated hardware and resource management solutions for wireless base stations," in 2011 IEEE 22nd International Symposium on Personal Indoor ...

[Get Started](#)



s1 mode in 5g

Dec 30, 2023 · Here's a technical breakdown of the s1 mode in 5G: The eNB is the base station in the LTE/5G network responsible for handling user equipment (UE) connections, radio resource ...

[Get Started](#)



S1 communication grounding network ground ...

By analyzing the lightning protection and grounding requirements of the



respective systems of the communication base station and the power tower, ...

[Get Started](#)

How the S1 Interface Works in the LTE Network

Jun 30, 2025 · The S1 interface is a crucial component of the LTE network that connects the eNodeB (the base station) and the EPC (the core network). It ...



[Get Started](#)



Enabling Green Cellular Networks: A Survey and Outlook

Today, green communication is one of the main design goals of future mobile networks and current research aims to enable sustainable growth of broadband wireless infrastructure.

[Get Started](#)

Green communications in LTE networks with environmentally

...

Sep 28, 2012 · Green communications in LTE networks with environmentally friendly small cell base stations (BSs) are investigated. An approach to reassign mobile users to diff

[Get Started](#)



Multi-objective cooperative optimization of communication base station

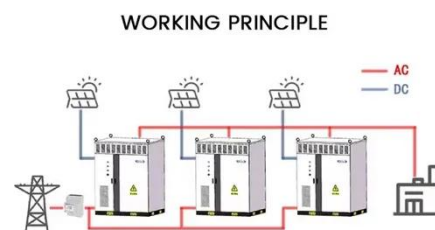
Sep 30, 2024 · Recently, 5G communication base stations have steadily evolved into a key developing load in the distribution network. During the operation process, scientific dispatching ...

[Get Started](#)

X2 Interface between base stations in LTE

Aug 7, 2023 · The X2 interface is a critical component of the Long-Term Evolution (LTE) cellular network architecture. It facilitates communication and ...

[Get Started](#)



**Green Communications ,
Engineering And Technology
Journal**



The main goal of designing green base stations is to save energy and reduce power consumption while guaranteeing user service and coverage and ensuring the base station's capability for ...

[Get Started](#)

Green and Sustainable Cellular Base Stations: An ...

Apr 25, 2017 · As its major contribution, this study highlights the uses of renewable energy in cellular communication by: (i) investigating the system ...



[Get Started](#)



Communication Base Station Green Energy , Huijue Group E ...

As global telecom networks expand exponentially, how can communication base station green energy solutions address the sector's mounting carbon footprint? With over 7 million cellular ...

[Get Started](#)

Green Base Station Solutions and Technology

Mar 20, 2011 · The green base station

solution involves base station system architecture, base station form, power saving technologies, and application of

...

[Get Started](#)



5G NR Interfaces X2/Xn, S1/NG, F1 and E1 Functions

Nov 21, 2023 · 5G New Radio (NR) is the global standard for a unified, more capable 5G wireless air interface. In the 5G network architecture, various interfaces and functions facilitate ...

[Get Started](#)

Breaking Down Base Stations - A Guide to ...

May 31, 2022 · Wondering what telecom sites really look like? Find everything you need to know about telecom sites, towers, and their components.

[Get Started](#)



UAV Assisted BS Sleep Strategy for Green Communication



Apr 29, 2025 · The evolving mobile communication technology is constantly striving to meet the growing demands for higher transmission rate, greater connection density, and lower end-to ...

[Get Started](#)

What is S1-U (S1 for the user plane)

Aug 14, 2025 · The S1-U interface connects the eNodeB (the LTE base station) and the S-GW (Serving Gateway) in the LTE network. It provides non-guaranteed data delivery for user plane ...

[Get Started](#)



Base Stations

Jul 23, 2025 · The present-day tele-space is incomplete without the base stations as these constitute an important part of the modern-day scheme of wireless ...

[Get Started](#)

A Review on Green Communications

Mar 7, 2022 · Abstract-- Green

communication aims at addressing the exploration of sustainability regarding environmental condition, energy efficiency and the communication ...

[Get Started](#)



Military Communication

4 days ago · The standalone 4G LTE Manpack Base Station provides a quick and smart network for voice, data, video, and Position Location for Information ...

[Get Started](#)



- ✓ 100KW/174KWh
- ✓ Parallel up-to 3sets
- ✓ IP Grade 54
- ✓ EMS AND BMS

Green communication systems via a wavefront ...

Jan 2, 2025 · spectrum1-5 and green communication at base stations (BSs), that is, sustainable with low power consumption. BSs account for most of the total consumed energy in cellular ...

[Get Started](#)



DBS5900 Distributed Base Stations

Aug 13, 2025 · The DBS5900 is a wireless access device for the eLTE



wireless broadband private network solution. It provides wireless access functions, including air interface management, ...

[Get Started](#)

SDW 5000 Series

Feb 15, 2019 · i "easy pairing" to subsequently use the GUEst headset with other base stations, place the GUEst headsets into the other base stations. the Headset LeD alternately flashes ...

[Get Started](#)



Green and Sustainable Cellular Base Stations: An ...

Apr 9, 2019 · Energy efficiency and renewable energy are the main pillars of sustainability and environmental compatibility. This study presents an ...

[Get Started](#)



1075KWHH ESS

The carbon footprint response to projected base stations of ...

Apr 20, 2023 · We linked these provincial base stations with provincial Gross

Domestic Product (GDP), population (POP), and big data development level (BDDL) and established a statistical ...

[Get Started](#)



The Architecture of Modern Ground Stations

Feb 28, 2024 · Discover the intricate design and cutting-edge technology behind modern ground stations, where precision meets innovation in satellite ...

[Get Started](#)

Contact Us

For catalog requests, pricing, or partnerships, please visit:
<https://www.persianasaranda.es>