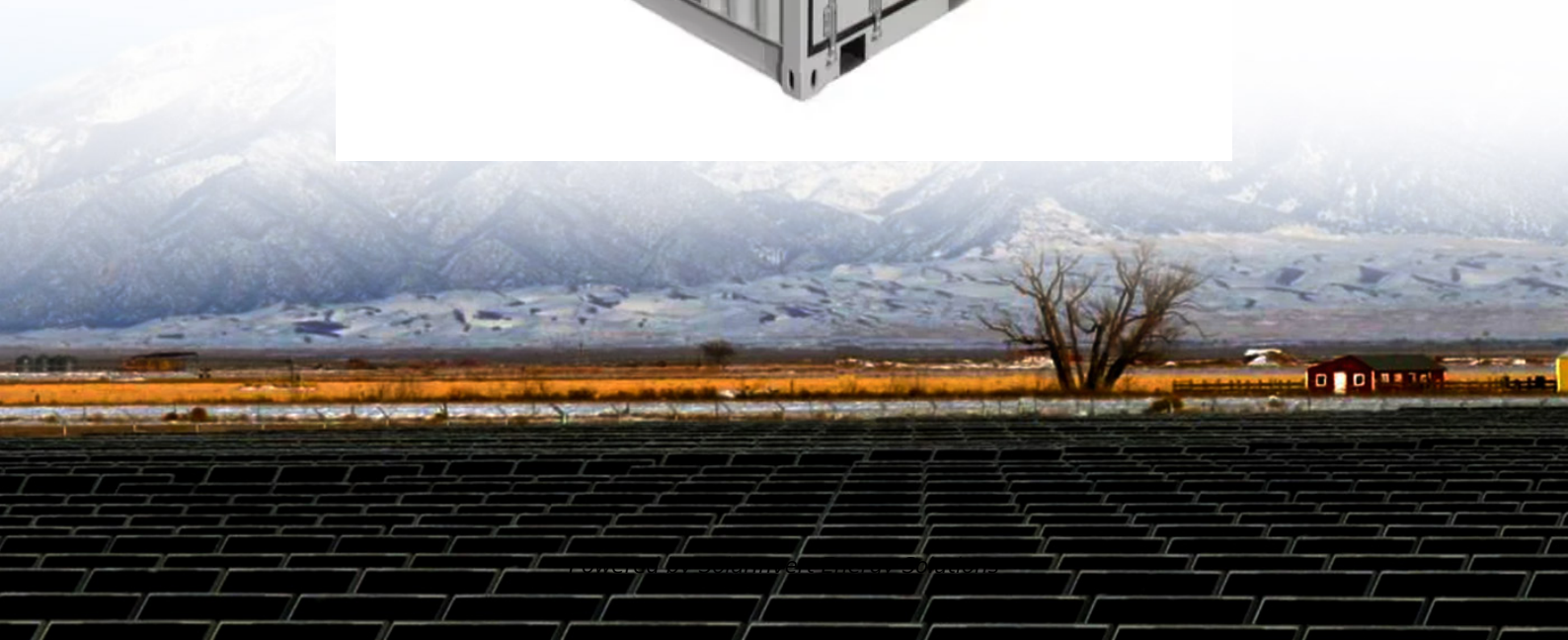


SolarInvert Energy Solutions

St George Wireless Communication Network Base Station



Overview

What is a mobile base station?

A mobile base station, also called a base transceiver station (BTS), is a fixed radio transceiver in any mobile communication network or wide area network (WAN). The base station connects mobile devices to the network and routes them to other terminals in the network or to the core network of a mobile operator. Read more [Explore Mobile base](#).

How does a wireless device communicate with a base station?

When a wireless device, such as a mobile phone, communicates with a base station, the device sends a signal to the base station, which converts the signal into digital form and sends it to the network. Similarly, when the network sends data to the device, the base station converts the digital data into a wireless signal that the device can receive.

What is a base station in a wireless network?

At the heart of wireless communication networks are base stations, which act as the gateway between wireless devices and the network infrastructure. Base stations are responsible for transmitting and receiving data to and from wireless devices, as well as managing network resources and ensuring reliable and efficient communication.

What is a base station?

What is Base Station?

A base station represents an access point for a wireless device to communicate within its coverage area. It usually connects the device to other networks or devices through a dedicated high bandwidth wire of fiber optic connection. Base stations typically have a transceiver, capable of sending and receiving wireless signals;.

Why are base stations important in cellular communication?

Base stations are important in the cellular communication as it facilitate seamless communication between mobile devices and the network communication. The demand for efficient data transmission are increased as we are advancing towards new technologies such as 5G and other data intensive applications.

Why is a base station important?

A base station plays a pivotal role in the realm of telecommunications, acting as the cornerstone of connectivity. It enables seamless communication by linking various wireless devices to broader networks, ensuring that data flows efficiently from one point to another.

St George Wireless Communication Network Base Station



Display screen
Linux operation system
quad-core processors
smooth and stable system



Placing base stations in wireless indoor communication networks

Aug 6, 2002 · More and more mobile communications comes to company sites through local (typically indoor) wireless communication networks. However, planning wireless networks is ...

[Get Started](#)

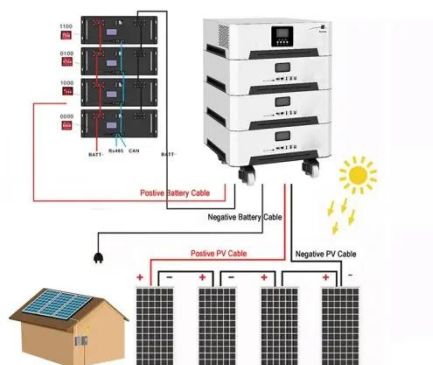
Base Transceiver Stations (BTS)

A Base Transceiver Station, commonly known as BTS, is a critical piece of equipment in wireless communication networks. It serves as the primary point

...



[Get Started](#)



What Is the Role of a Base Station in Wireless Communication?

Jun 27, 2025 · Base stations are the backbone of wireless communication networks, playing a pivotal role in signal transmission, network reliability, and high-speed data connectivity. As ...

[Get Started](#)

What is a base station and how are 4G/5G base ...

Aug 16, 2022 · Base station is a stationary trans-receiver that serves as the primary hub for connectivity of wireless device communication.

[Get Started](#)



5G base station architecture, Part 1: Evolution

May 16, 2015 · At the Brooklyn 5G Summit, Theodore Rappaport and George R. McCartney, Jr. from NYU Wireless, addressed mmWave Channel models. ...

[Get Started](#)

Understanding the Base Station Subsystem: A ...

Oct 4, 2024 · In the world of mobile telecommunications, understanding the Base Station Subsystem (BSS) is paramount for grasping how our everyday communications function ...

[Get Started](#)



Global 5G Base Station Industry Research Report ...

The 5G base station is the core device of

the 5G network, providing wireless coverage and realizing wireless signal transmission between the wired ...

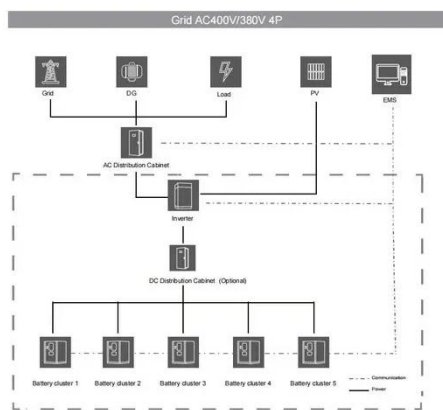
[Get Started](#)



Mobile base station , Application

A mobile base station, also called a base transceiver station (BTS), is a fixed radio transceiver in any mobile communication network or wide area network ...

[Get Started](#)



Design of Wireless Communication Base Station Monitoring ...

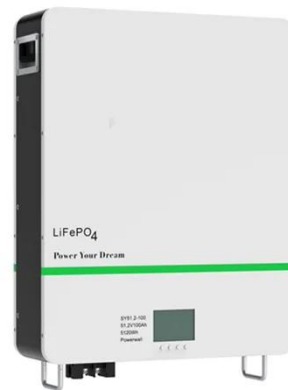
Jan 1, 2023 · With the rapid popularization of the network, under the increasingly complex network security situation and the increasingly prominent network security problems, network security ...

[Get Started](#)

STM32WL-Communication- Sigfox (SIGFOX)

Dec 9, 2020 · With a Large Link Budget of 140dB, the achievable range is over 10kms. The network architecture is shown in this picture: Sigfox IoT objects which may run on battery are ...

[Get Started](#)



(PDF) Accurate Base Station Placement in 4G LTE ...

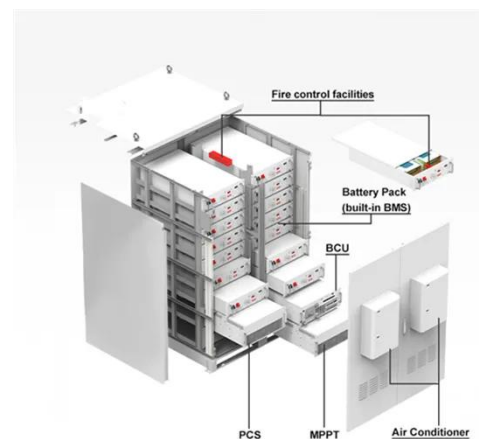
Feb 11, 2023 · Accurate Base Station Placement in 4G LTE Networks Using Multiobjective Genetic Algorithm Optimization February 2023 Wireless ...

[Get Started](#)

The Base Station in Wireless Communications: ...

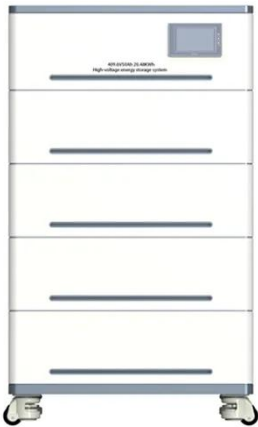
Aug 7, 2024 · Base station, also known as BTS (Base Transceiver Station), is a key device in wireless communication systems such as GSM. Equipped with ...

[Get Started](#)



Difference Between Access Point, Station, Bridge, ...

Mar 18, 2024 · An access point is used to connect a wired network to a wireless



one. Thus it is connected to a router by a wired connection and transmits a ...

[Get Started](#)

Basestation

A base station is a standalone wireless communication system and is used to communicate as part of wireless telephone system such as GSM or CDMA cell sites. Base stations need to ...

[Get Started](#)



Understanding Wireless Base Stations: Definition ...

Sep 8, 2023 · A wireless base station is an important component of cellular networks. It serves as a hub that connects mobile devices to the broader ...

[Get Started](#)

Unraveling the Mysteries of Cell Towers and ...

4 days ago · The base station promoting wireless communication can be a hub of

a dispatch fleet such as delivery or taxi fleet. The base of a TETRA network is ...

[Get Started](#)



IoT Glossary: Base Station Controller Explained

May 11, 2022 · A base station is company specific, but competing telecommunication companies can have their individual base stations on a physical site. In terms of wireless communication, ...

[Get Started](#)

What is a Base Station?

Jan 18, 2022 · A base station works as the main communication point for one or more wireless mobile devices. It is a fixed transceiver capable of sending and ...

[Get Started](#)



Wireless Communication Base Station Location Selection ...

Jun 9, 2024 · Keywords: Wireless



Communication Base Station Location Selection; Optimization; Neural Network Algorithms; Convolutional Neural Network Network ation are critical to ...

[Get Started](#)

The Central Role of Base Stations in Two-Way ...

What is a Base Station in Two-Way Radio Communication? A base station in the context of two-way radio communication refers to a fixed, central hub that ...

[Get Started](#)



48V 100Ah



Soft Base Station Technology in Wireless ...

Dec 20, 2010 · This paper introduces the background of soft base stations and analyzes their architecture design, system modules. The key technologies in ...

[Get Started](#)

Optimal Placement of Base Stations in Wireless Indoor

Jan 1, 1999 · Planning of local wireless communication networks is about

installing base stations (small radio transmitters) to provide wireless devices with strong enough signals. POPULAR is

...

[Get Started](#)



The Base Station in Wireless Communications: ...

Nov 10, 2023 · Base station, also known as BTS (Base Transceiver Station), is a key device in wireless communication systems such as GSM. Equipped with ...

[Get Started](#)

RBS (radio base station)

Jun 12, 2023 · A Radio Base Station (RBS), also known as a base transceiver station (BTS), is a key component of a cellular network infrastructure. It serves

...

[Get Started](#)



Wireless Communication Base Station Location Selection ...

Jun 9, 2024 · 1. Introduction Recently, with the rapid development of wireless



communication technology, the enhancement of wireless network performance is concerned with meeting the ...

[Get Started](#)

Integrating Base Station with Intelligent Surface for 6G Wireless

Nov 19, 2024 · In particular, integrating passive IS into the base station (BS) is a novel solution to enhance the wireless network throughput and coverage both cost-effectively and energy ...

[Get Started](#)



Green Base Station Solutions and Technology

Mar 20, 2011 · A base station is an important element of a wireless communications network and often the main focus of power saving in the ...

[Get Started](#)

Contact Us

For catalog requests, pricing, or partnerships, please visit:

<https://www.persianasaranda.es>