

SolarInvert Energy Solutions

Substation battery cabinet installation requirements and specifications



Overview

Where should batteries be installed in a substation?

Batteries installed in unit substations, electrical equipment rooms and instrument rack rooms shall comply with the requirements of this section, Main Substation Design and Unit Substation Design. In these locations, stainless steel hoods vented to the outside shall be installed over batteries.

What issues should a substation design engineer consider when installing batteries?

Hydrogen off-gassing is another issue that often arises when dealing with batteries in a substation. The design engineer should consult American Petroleum Institute Recommended Practice 500 to determine ventilation and classification requirements whenever batteries are installed indoors.

What are the substation specific requirements?

Substation specific requirements are detailed in Section 6. All distribution boards shall include either a 100A/125A double-pole (phase and neutral) or 125A 4-pole (three-phase and neutral) disconnect and the relevant RCBOs or MCBs. The RCBO/MCBs shall be selected based on the load characteristics in accordance with BS 7671.

What equipment should be included in a secondary substation (switch room)?

If the secondary substation (switch room) houses indoor panel type switchgear (e.g. Genie Evo) or other indoor equipment (e.g. RTU, battery charger, protection etc.) refer to Section 6.2 for the applicable requirements.

What is a substation battery system?

The primary role of the substation battery system is to provide a source of energy that is independent of the primary ac supply, so that in the event of the loss of the primary supply the substation control systems that require energy to operate can still do so safely.

How to operate a battery charger in a substation LVAC distribution board?

3.3.1. Battery Chargers shall be operated from a 230V single phase or 415V 3 phase 50 Hz AC supply from a dedicated output from the substation LVAC distribution board. 3.3.2. The AC input is to be connected to the system via a Surge Protection Device (SPD) to BS EN 61643-11 that will protect the DC system against surge conditions on the AC supply.

Substation battery cabinet installation requirements and specifications



-48 VDC Battery Cabinet Installation and User Manual ...

Apr 21, 2022 · Install the frame ground landing point adapter P/N 556872 to the left or right side of the battery cabinet, as shown in Figure 5. Installing P/N 556872 Frame Ground Landing Point ...

[Get Started](#)

Battery Installation Requirements , PDF , Battery ...

Feb 27, 2025 · The document also addresses determining auxiliary equipment needs according to Saudi Aramco standards and electrical codes. Work aids ...

[Get Started](#)



Substation Battery Systems Present & Future

Apr 29, 2024 · The substation batteries for the DC system must be in operation 24/7 - 365 - NOT just for backup power, but also to provide the current needed for day-to-day switching operations

[Get Started](#)

Secondary distribution substations

TG-NET-SST-017 - Secondary Distribution Substations - Particular Requirements for Joint Owner and HV Metered Substation
TG-NET-SST-018 - Secondary ...

[Get Started](#)



Outdoor Cabinet BESS
50 kWh/500 kWh Battery Storage System
Industrial and Commercial Energy Storage



- All In One**
Integrating battery packs
- High-capacity**
50 - 500kWh
- Degree of Protection**
IP54
- Operating Temperature Range**
-20~60°C;(Derating above 50 °C)
- Intelligent Integration**
Integrated photovoltaic storage cabinet
- Rated AC Power**
50-100kW
- Altitude**
3000m(>3000m derating)

Microsoft Word

Apr 10, 2022 · This Saudi Electricity Company (SEC) Distribution Material Specifications (SDMS) specifies the minimum technical requirements of design, engineering, manufacturing, ...

[Get Started](#)

GENERAL SPECIFICATIONS FOR ELECTRICAL WORKS

Sep 16, 2013 · General A sub-station installation is a combination of a number of major equipments like Transformers, High Voltage Panel, Medium Voltage (MV) Panels, Inter ...

[Get Started](#)



EDS 07-1119 Substation Electrical Services

Jan 22, 2024 · New standard to cover the electrical services requirements in all



substations. The electrical services requirements from EDS 07-0102, EDS 07-0105 and EDS 07-0020 have ...

[Get Started](#)

UPS/DC Battery Room, Equipment Installation Requirements ...

QC Before Installation - Battery room Equipment shall conform to all applicable requirements, standards, and specifications prior to release to be used as part of work. Incoming Battery ...



[Get Started](#)



IEEE 525-2007_accepted

May 23, 2010 · IEEE-SA Standards Board Abstract: The design, installation, and protection of wire and cable systems in substations are covered in this guide, with the objective of minimizing ...

[Get Started](#)

Engineering Equipment Specification 25/6

Nov 2, 2018 · This Engineering

Equipment Specification (EE SPEC) defines the requirements for substation 110V batteries, battery chargers, battery controllers, dc distribution boards & ...

[Get Started](#)



Technical Specification of Stationary Batteries and Battery ...

Mar 3, 2021 · Technical Specification of Stationary Batteries and Battery Charger 30 V, 100 Ah, 25A Suitable for MSEDCL 33/11 kV Conventional Substation and 30V, 200 Ah, 50A Suitable for ...

[Get Started](#)

Substation Battery Systems Present & Future

Apr 29, 2024 · Designed to provide power backup for switches, circuit breakers, motors, monitors and communications equipment used for protecting electricity generation, distribution, ...

[Get Started](#)



Specifications and requirements for battery cabinets in ...



o Battery rack/cabinet (if battery modules or Pre-assembled battery system requires external battery racks/cabinets for mechanical mounting/protection).
o Balance of system components ...

[Get Started](#)

Battery Room Design Requirements - PAKTECHPOINT

Jul 24, 2025 · Learn best practices for substation battery installation and maintenance. Discover how reliable battery systems support substation protection and avoid costly outages.

[Get Started](#)



Batteries and Battery Chargers in Major Substations

Jun 6, 2024 · Battery chargers shall comply with the Type 2 requirements of AS 4044 - Battery chargers for stationary batteries, (i.e. the charger is to be suitable for providing supply to a ...

[Get Started](#)

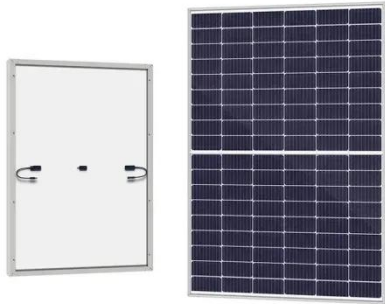


Substation battery cabinet installation specifications

Battery rooms or stationary storage battery systems (SSBS) have code

requirements such as fire-rated enclosure, operation and maintenance safety requirements, and ventilation to prevent ...

[Get Started](#)



Substation Power Systems and Switchgear

Power Solutions offers customized substation battery systems to meet the requirements of most facilities. We can help configure the entire substation ...

[Get Started](#)

Specifications for Electrical Installations

Mar 5, 2024 · These 2024 specifications consolidate and replace the "Specification for Electrical Installation 2022, and are in effect for the following National Grid companies:

[Get Started](#)



Batteries and Battery Chargers in Major Substations

Jun 6, 2024 · Design Criteria - Batteries
Design philosophy to ensure sufficient



capacity to make safe substation on loss of AC supply. In addition the ability to supply high current transient ...

[Get Started](#)

Business Documentation (DBD)

May 16, 2022 · Northern Powergrid utilises a "DC Disconnect facility" to meet the requirements stated in ENA Engineering Recommendation G91 Substation Black Start Resilience. At these ...



[Get Started](#)



Installation and commissioning of 11/0.43 kV ...

Jan 8, 2020 · 11/0.43 kV distribution substation The decision of a MV or LV supply will depend on local circumstances and considerations such as those ...

[Get Started](#)

Designing Industrial Battery Rooms: Fundamentals and ...

Designing Industrial Battery Rooms:

Fundamentals and Standards Industrial battery rooms require careful design to ensure safety, compliance, and operational efficiency. This article ...

[Get Started](#)



Maintenance BestPractices & Intervals for Substation ...

Oct 24, 2017 · There's no one answer to a perfect Substation Maintenance Schedule. Today we'll be using our industry and utility experience, but your engineering firm, the manufactures ...

[Get Started](#)

bhel-hpvp,vISAKHAPATNAM

Mar 4, 2025 · This specification is intended to cover the design, manufacture, assembly, testing at manufacturer's works, supply & delivery, properly packed for transport of the Packaged ...

[Get Started](#)



Battery Room Design Requirements - ...

It does not cover maintenance free or computer room type batteries and



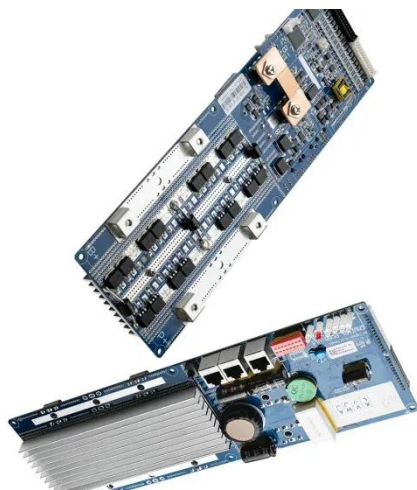
battery cabinets. Main keywords for this article are Battery Room Design ...

[Get Started](#)

Specification for Batteries (IEC)

Jan 18, 2021 · This specification is to be applied in conjunction with the supporting data sheet, quality requirements specification (QRS) and information requirements specification (IRS) as ...

[Get Started](#)



Utility-scale battery energy storage system (BESS)

Mar 21, 2024 · Introduction Reference Architecture for utility-scale battery energy storage system (BESS) This documentation provides a Reference Architecture for power distribution and ...

[Get Started](#)

Battery Room Design Aspects , PDF , Electrical ...

Oct 9, 2024 · This document outlines

design requirements for battery rooms containing vented lead acid batteries. It specifies that battery rooms must be ...

[Get Started](#)



substation

Oct 21, 2022 · IEEE Std 1268TM-2005, IEEE Guide for Safety in the Installation of Mobile Substation Equipment IEEE Std 1303TM-2011, IEEE Guide for Static var Compensator Field ...

[Get Started](#)

Substation Primary Design Standard

Aug 12, 2022 · The primary systems are the high voltage, civil and structural and building elements. The secondary systems are the protection, communication and control, auxiliary ...

[Get Started](#)



Business Documentation (DBD)

May 16, 2022 · This specification details the technical requirement for 48V and



110V batteries and chargers for use in substations where DC supplies are required for control, protection and ...

[Get Started](#)

Substation cabinets

Jan 30, 2024 · This article will give you an overall introduction to substation cabinets and how to use it properly, also the precautions tips on the ...

[Get Started](#)



Business Documentation (DBD)

May 16, 2022 · The electrical installation shall be fully tested by the manufacturer prior to delivery in accordance with the current edition of the IET Wiring Regulations BS 7671, for TNCS and ...

[Get Started](#)

Contact Us

For catalog requests, pricing, or partnerships, please visit:

<https://www.persianasaranda.es>