

SolarInvert Energy Solutions

**The best base station for
domestic communications is**



Overview

Today's mobile applications require a high network availability as well as high traffic throughput. With the challenging landscape of the modern cities (tall buildings, city.

Form factor is a big part of continuing evolution. A slimmer form factor can allow more antennas on a site and reduce windloading which.

Multiple solutions allow operators to ensure the BSA solution they select best addresses the problems they face at that site. The RFS.

5G sites are expensive in terms of CAPEX and OPEX. That's why the legacy, less-expensive technologies will continue to be a big part of any cellular network. This leads to the imminent need for highly efficient passive base station antennas supporting various.

Sadly, there isn't a silver bullet when it comes to solving 5G roll out challenges. There isn't a one size fits all or a single 'best' base station option but instead operators need to be.

What is a base station?

What is Base Station?

A base station represents an access point for a wireless device to communicate within its coverage area. It usually connects the device to other networks or devices through a dedicated high bandwidth wire of fiber optic connection. Base stations typically have a transceiver, capable of sending and receiving wireless signals;.

Why are base stations important for modern telecommunications?

In summary, base stations are critical for modern telecommunications as they serve as the link between mobile devices and the extensive network infrastructure that spans the globe. The strategic deployment and ongoing improvement of these stations are essential for maintaining global connectivity.

What is a base station in a cellular network?

A base station, also known as a cell site or cell tower, is an integral part of a cellular network. It serves as a central hub for communication between mobile devices and the network infrastructure. Here is a simplified explanation of how a base station works: 1.

What are the different types of base stations?

Some basic types of base stations are as follows: Macro-base stations are tall towers ranging from 50 to 200 feet in height, placed at strategic locations to provide maximum coverage in a given area. Those are equipped with large towers and antennas that transmit and receive radio signals from wireless devices.

How to choose a base station?

Frequency: The base station should operate on a frequency that is compatible with the devices it will be communicating with. Common frequencies include 900 MHz, 1.8GHz, 2.1GHz, 2.4 GHz, 2.6GHz and 5 GHz ,etc. 3. Power: The base station should have enough power to provide a strong and reliable signal.

What is an indoor base station?

Indoor base stations in rack format This is the most common type of base station, in which all its components are integrated in a rack-type cabinet, which provides more space for more modules or components. This can enable, for example, redundancy of all components, thereby improving system availability.

The best base station for domestic communications is



What Is a Base Station PCB? A Complete Guide for 2025

Jun 14, 2025 · Whether you're an RF engineer, a telecom OEM, or a curious buyer, understanding the fundamentals of base station PCBs in 2025 is essential for building efficient and future ...

[Get Started](#)

What Is Base Station In Mobile Communication?

Jan 11, 2025 · What is a Base Station? A base station, also known as a cell site, is a critical component of a mobile communication network. It is a fixed structure that houses the ...



[Get Started](#)



10 Best Base Station HAM Radios for Maximum ...

Jul 27, 2025 · HAM radios are a popular tool for communication enthusiasts. Unlike regular radios, they allow two-way communication over long distances. ...

[Get Started](#)

Base Stations

Jul 23, 2025 · What is Base Station? A base station represents an access point for a wireless device to communicate within its coverage area. It usually ...

[Get Started](#)



What Are Base Station Antennas? Complete Guide

Nov 20, 2024 · Base station antennas are also known as cell site antennas and cellular antennas, and they are typically mounted on a tower or rooftop and ...

[Get Started](#)

Low-Carbon Sustainable Development of 5G Base Stations in ...

May 4, 2024 · Goncalves et al. (2020) explored carbon neutrality evaluation of 5G base stations from the perspective of network structure and carbon sequestration. Despite the growing ...

[Get Started](#)



Types of Base Stations

Jul 23, 2025 · Base stations are one of the widely used components in the field of wireless communication and



networks. It is an access point or base point of a ...

[Get Started](#)

Why Choose Base Station for Reliable Communication , KSA

Aug 7, 2025 · Choose SaudiaRadios's base station for secure, long-range communication in Saudi Arabia, ideal for tough conditions and key industries.

[Get Started](#)



7 Best Ham Radio Base Stations 2025 - Ham ...

Jun 28, 2020 · The Best Ham Radio Base Station Reviews 2022 1. Yaesu Original FT-450D Ham Radio Base Station - 100 Watts

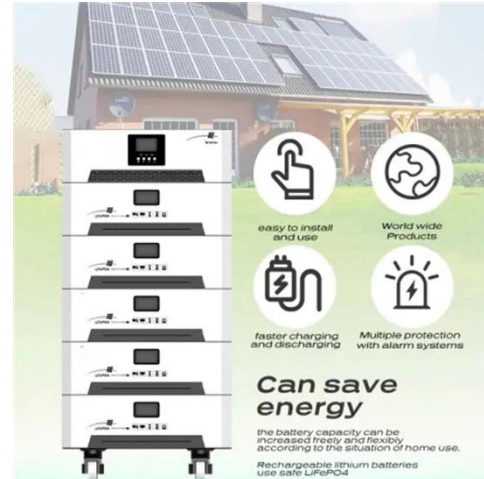
[Get Started](#)

Best Base Station Ham Radio (2025 Update)

Jun 3, 2025 · Yes, the best base station ham radios can be used for both voice and data communication. Many modern

ham radios come with digital modes ...

[Get Started](#)



Best Ham Radio Base Station Kits for Effective ...

Explore the best ham radio base station kits for effective communication. Find top-rated options to enhance your amateur radio experience and connectivity.

[Get Started](#)

Airborne Base Stations Bring Back Connectivity

Jan 3, 2025 · When a major typhoon swept through Hainan Province in September 2024, Haikou City and Wenchang City suffered heavy damage, transportation was blocked and power and ...

[Get Started](#)



✓ IP65/IP55 OUTDOOR CABINET

✓ IP54/55

✓ OUTDOOR ENERGY STORAGE CABINET

✓ OUTDOOR MODULE CABINET

base station in 5g

Dec 8, 2023 · A 5G base station, also known as a gNodeB (gNB), is a critical component of a 5G network



infrastructure. It plays a central role in enabling ...

[Get Started](#)

Can I Use Only 1 Base Station? Understanding Your Network

...

Apr 18, 2025 · A base station is a key component of a wireless communication system, responsible for connecting various devices to a network. Often used in telecommunication ...



[Get Started](#)

ESS



Base Station's Role in Wireless Communication Networks

What is a base station? A base station is a critical component of wireless communication networks. It serves as the central point of a network that connects various devices, such as ...

[Get Started](#)

2-Way Radio Base Stations -- Silke ...

Base Stations The radios get all the

glory, but a base station is essential. Let us help you identify the best solution for your needs. BK Technologies Formerly ...

[Get Started](#)



Top 9 Best Ham Radio Base Stations In 2023

Aug 18, 2025 · Are you looking for the best ham radio base station in 2023? Check out this honest review of the 9 best Ham Radio Base Stations and the ...

[Get Started](#)

10 Best Base Station CB Radios for Clear ...

Jun 1, 2025 · CB radios have been a staple communication tool for decades, providing reliable short- range communication for truckers, hobbyists, and ...

[Get Started](#)



9+ Popular Ham Radio Base Stations for the Best Communication

Jan 13, 2025 · A ham radio base station is the central hub of a ham radio system.

It typically consists of a transceiver, antenna, and power supply. The transceiver is the heart of the base ...

[Get Started](#)



The Base Station in Wireless Communications: ...

Aug 7, 2024 · Base station, also known as BTS (Base Transceiver Station), is a key device in wireless communication systems such as GSM. Equipped with ...

[Get Started](#)



Base station types: a solution for every deployment scenario

Apr 28, 2021 · There are different types of base stations, offering a wide variety of operating characteristics under different conditions, with a suitable solution for each type of scenario, but ...

[Get Started](#)

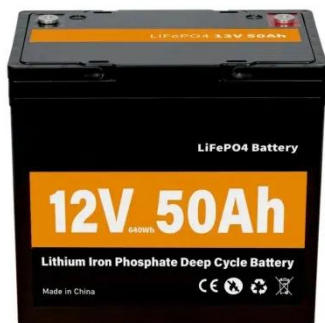


UHF Base Stations for Urban and Indoor Communication

In professional communication, UHF (Ultra High Frequency) base stations are an indispensable tool for ensuring robust

and reliable connectivity in challenging environments. From urban ...

[Get Started](#)



Ambitious 5G base station plan for 2025

Aug 17, 2025 · Technicians from China Mobile check a 5G base station in Tongling, Anhui province. [Photo by Guo Shining/For China Daily] China aims ...

[Get Started](#)

What Is A Base Station?

Apr 22, 2024 · A base station is an integral component of wireless communication networks, serving as a central point that manages the transmission and reception of signals between ...

[Get Started](#)



Choosing the Optimal Channels for Base Stations: A ...

Apr 22, 2025 · In the world of wireless communication, the choice of channels for base stations plays a critical role in



Battery String-S224

- 1C Charge/Discharge
- Easy configuration and maintenance
- Power supply can be single battery string or parallel battery strings

ensuring reliable service, minimizing interference, and optimizing ...

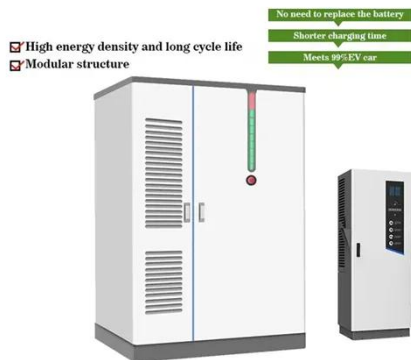
[Get Started](#)

7 Best Ham Radio Base Stations in 2025

3 days ago · Also called amateur radios, ham radios facilitate communications through shortwave radio stations. This way, you can reach another person ...



[Get Started](#)



Recommended 5 GMRS Base Stations

Feb 23, 2024 · Choosing a GMRS base station involves considering several factors to ensure that the equipment meets your specific needs. Whether you are an outdoor enthusiast, a prepper, ...

[Get Started](#)

chapter 9 Flashcards , Quizlet

A (n) _____ handoff is when a cellular communication is conditionally handed off from one base station to another and the mobile equipment is

simultaneously communicating with ...

[Get Started](#)



The Best Emergency Two Way Radio Setup For ...

Here is how to make an emergency backup two way radio system for your family with a base station and mobiles using GMRS, FRS or MURS radios for ...

[Get Started](#)

10 Best Ham Radio Base Station Antennas To ...

Dec 11, 2023 · Ham radio base station plays a vital role in transmitting signals. Hence, the importance of a ham radio base station antenna is undeniable.

[Get Started](#)



What Is A Base Station?

Apr 22, 2024 · A base station is an integral component of wireless communication networks, serving as a central point that manages the



transmission and ...

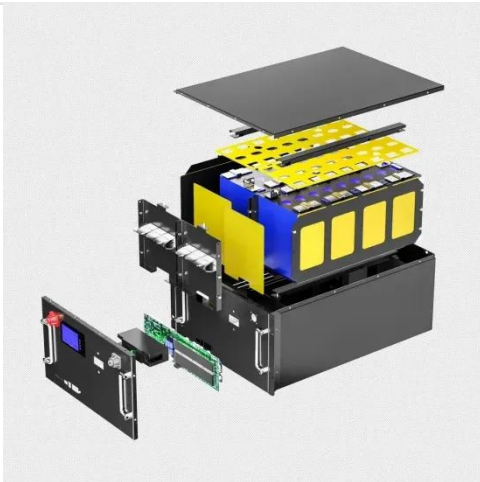
[Get Started](#)

Choosing the Optimal Channels for Base Stations: A ...

Apr 22, 2025 · In this extensive article, we explore the various factors that influence channel selection for base stations, the impact of the wireless environment, and best practices for ...



[Get Started](#)



What Are Base Station Antennas? Complete Guide

Nov 20, 2024 · In modern telecommunications systems, the base station antenna stands out as an undeniable and crucial component to facilitate our daily ...

[Get Started](#)

Base Station Design for Wireless Communications Engineers

Base stations are the backbone of

wireless communication networks. They facilitate the transmission and reception of signals between mobile devices and the network. Effective base ...

[Get Started](#)



Contact Us

For catalog requests, pricing, or partnerships, please visit:
<https://www.persianasaranda.es>