

## SolarInvert Energy Solutions

# Two lithium battery packs connected in parallel



## Overview

---

Can lithium batteries be connected in parallel?

Lithium batteries can indeed be connected in parallel, and this method is commonly used to achieve higher capacity and extend the runtime of a battery system. By connecting two or more lithium batteries with the same voltage in parallel, the resulting battery pack retains the same nominal voltage but boasts a higher Ah capacity.

What is a parallel lithium battery pack?

According to the parallel principle, the current of the main circuit is equal to the sum of the currents of the parallel branches. Therefore, a parallel lithium battery pack with “n” parallel batteries achieves the same charging efficiency as a single battery, with the charging current being the sum of the individual battery currents.

Why do I need to add batteries in parallel?

If your load requires more current than a single battery can provide, but the voltage of the battery is what the load needs, then you need to add batteries in parallel to increase amperage. Wiring batteries in parallel is an extremely easy way to double, triple, or otherwise increase the capacity of a lithium battery.

What are the advantages of parallel lithium batteries?

Parallel lithium batteries have many advantages, including increased capacity, enhanced power output, and improved overall performance. When multiple batteries are connected in parallel, their individual ampere-hour (Ah) capacities add up, resulting in a higher total capacity.

How do you maintain a parallel lithium battery?

To maintain parallel lithium batteries effectively: Regularly Check Voltage Levels: Ensure all batteries are at similar voltage levels before connecting.

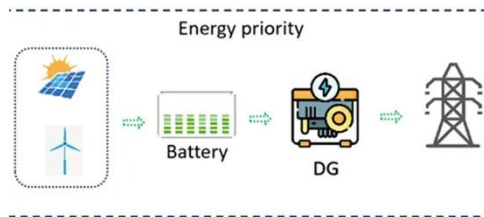
Balance Charging: Use a charger that balances charge among all connected batteries. Inspect Connections: Regularly check connections for corrosion or damage to prevent failures.

What happens if two batteries are put in parallel?

When two batteries are put in parallel the continuous discharge amp rating and charge amp rating is typically reduced to 90% of the two batteries' combined rating. Our EarthX batteries have the capability of extremely high discharge rates and charge rates.

## Two lithium battery packs connected in parallel

---



### Strings, Parallel Cells, and Parallel Strings

Feb 15, 2016 · Strings, Parallel Cells, and Parallel Strings Whenever possible, using a single string of lithium cells is usually the preferred configuration for a lithium ion battery pack as it is ...

[Get Started](#)

---

### Wiring Batteries in Parallel: Understanding the ...

Jan 4, 2025 · When lithium batteries are wired in parallel, their positive terminals are connected together, and their negative terminals are also linked. This ...

[Get Started](#)

---



### Can You Use Two Lithium Batteries in Parallel?

Dec 12, 2023 · Yes, you can connect two lithium batteries in parallel to increase the overall capacity and current output of your battery system. However, it is crucial to ensure that the ...

[Get Started](#)

---



## All Things You Need to Know about Lithium ...

Can a single cell provide a car enough power? Absolutely not, we all know that a single cell has limited voltage and capacity, in addition, the operation of a car ...

[Get Started](#)



### 3. Battery bank wiring

Aug 30, 2024 · Battery bank wiring matters. It matters how a battery bank is wired into the system. When wiring a battery bank, it is easy to make a mistake. One of the most common mistakes ...

[Get Started](#)

## What Happens When You Connect Two Batteries ...

Jun 22, 2024 · Connecting two batteries in parallel increases the total capacity (amp-hours) of your battery bank while maintaining the same voltage. This ...

[Get Started](#)



### Connecting two lithium batteries in parallel

There are ways to connect lithium batteries in parallel to double capacity



while keeping the voltage the same. This means two 12V 120Ah batteries wired in parallel will give you only 12V. But ...

[Get Started](#)

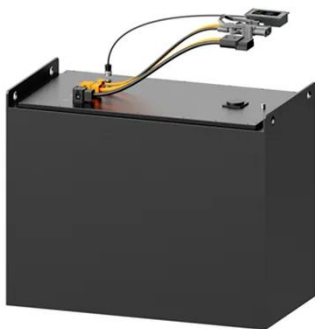
---

## How to connect multiple 48V lithium battery packs?

Conclusion Connecting multiple 48V lithium battery packs is a technical task that requires a good understanding of the connection methods, safety precautions, and the characteristics of the ...



[Get Started](#)



## How to Put 2 Battery Packs Together?

Jun 9, 2025 · In this comprehensive guide, as a professional lithium battery pack manufacturer, I'll explain step-by-step how to properly connect two battery packs in series or parallel to create a ...

[Get Started](#)

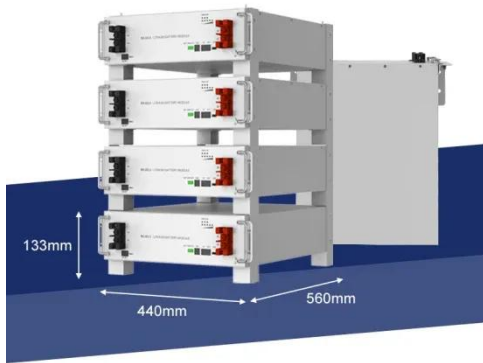
---

## Can I parallel multiple Lithium Battery Packs?

May 27, 2025 · The short answer is yes,

you can parallel multiple lithium battery packs. However, there are several factors you need to consider to ensure a safe and efficient operation. One of ...

[Get Started](#)



## How to Balance Lithium Batteries with Parallel ...

Sep 1, 2023 · Lithium batteries can indeed be connected in parallel, and this method is commonly used to achieve higher capacity and extend the runtime ...

[Get Started](#)

## How To Wire Lithium Batteries In Parallel ...

Aug 9, 2022 · Wiring batteries in parallel is an extremely easy way to double, triple, or otherwise increase the capacity of a lithium battery. When wiring ...

[Get Started](#)



## Parallel Battery Packs

Oct 15, 2024 · We've been looking at truck battery packs and a common thread is the parallel battery packs



approach. As there is no need for a propshaft the ...

[Get Started](#)

## How to Wire Batteries in Parallel or Series

Dec 7, 2018 · Charge only at room temperature. Two Batteries in Parallel can use just one Charger Batteries connected in series strings can also be recharged ...

[Get Started](#)



## Everything About Lithium Battery Series

May 21, 2025 · Learn how to safely connect lithium batteries in series and parallel. Avoid risks, extend battery life and build reliable power systems with ...

[Get Started](#)



## Management of imbalances in parallel-connected lithium-ion battery packs

Aug 1, 2019 · This paper investigated the management of imbalances in parallel-connected lithium-ion battery packs based on the dependence of current distribution on cell chemistries, ...

[Get Started](#)





**TAX FREE**

**ENERGY STORAGE SYSTEM**

**Product Model**  
HJ-ESS-215A(100KW/215KWh)  
HJ-ESS-115A(50KW 115KWh)

**Dimensions**  
1600\*1280\*2200mm  
1600\*1200\*2000mm

**Rated Battery Capacity**  
215KWH/115KWH

**Battery Cooling Method**  
Air Cooled/Liquid Cooled



## How should I connect multiple Lithium Polymer battery packs in parallel?

Sep 16, 2013 · I was thinking of connecting four external USB battery packs like these in parallel, as they output a nice regulated 5V and are easy to charge. But I know lithium chemistries are ...

[Get Started](#)

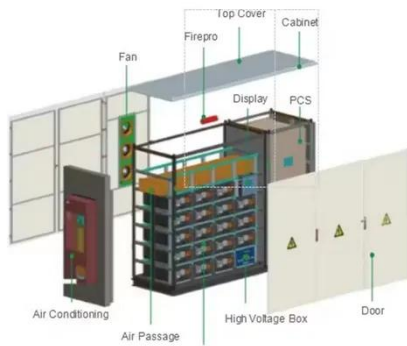
## batteries

Oct 4, 2022 · I'm working on batteries to run an underwater drone and a follow-boat using 3.7 V, 3400 mAh Li-ion cells. I need a voltage of around 18.5 V and ...

[Get Started](#)



## Charging Li-ion batteries in parallel



Aug 26, 2014 · I have more batteries from the same manufacturer and wanted to make higher capacity packs by putting two cells in parallel. The two cells come with their own PCB, but I ...

[Get Started](#)

## Lithium Battery Series / Parallel Operation

Check out our fact information sheet on the Lithium Battery Series and Parallel Operation. Get a breakdown of the basics, BMS, Parallel Operation and more!

[Get Started](#)



## ESS



## How should I connect multiple Lithium Polymer battery packs in parallel?

Sep 16, 2013 · There's no problem in putting lithium cells in parallel as long as they're similar, if you charge them in parallel they'll equalize, when you discharge them in parallel they'll ...

[Get Started](#)

## Management of imbalances in parallel-connected lithium-ion battery packs

Aug 1, 2019 · Uneven electrical current distribution in a parallel-connected lithium-ion battery pack can result in different degradation rates and overcurrent issues in the cells. Understanding the ...

[Get Started](#)



## How to Connect Batteries in Series VS Parallel

6 days ago · What is the better connection method between batteries in series VS parallel or series-parallel? The following will discuss.

[Get Started](#)

## Can I parallel multiple Lithium Battery Packs?

May 27, 2025 · A lithium battery pack consists of multiple individual lithium cells connected in series and/or parallel to achieve the desired voltage and capacity. When cells are connected in ...

[Get Started](#)

### APPLICATION SCENARIOS



## Can a lithium battery pack be used in parallel?

Aug 14, 2025 · For example, if you have two 12 - volt, 10Ah lithium battery packs



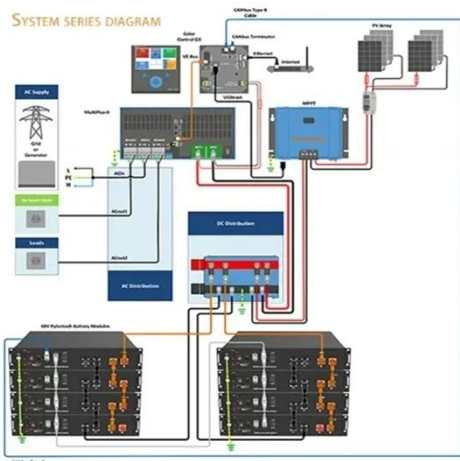
and you connect them in parallel, you'll end up with a 12 - volt, 20Ah battery system. This can be super useful in ...

[Get Started](#)

## Why can't lithium batteries be used in parallel at will?

Aug 2, 2025 · When connecting lithium batteries in parallel, attention should be paid to the consistency of the batteries, because parallel lithium batteries with poor consistency will fail to ...

[Get Started](#)



## Lithium Battery Series & Parallel Operation , Fact Sheets

Like individual cells, you can combine batteries together in parallel to achieve higher energy/power (amp-hours, amps). Up to two batteries can be put in parallel. To combine ...

[Get Started](#)

## How to Charge Two Batteries in Parallel: Step-by ...

Nov 20, 2024 · In this article, we'll guide

you on charging two batteries in parallel, explain key considerations and safety tips when batteries in parallel charging.

[Get Started](#)



## Understanding the Performance of Lithium ...

Mar 12, 2025 · For example, if you connect two 12V 100Ah batteries in parallel, the total capacity becomes 200Ah at 12V, effectively doubling the runtime of ...

[Get Started](#)

## How to Connect 18650 Batteries in Parallel

Feb 5, 2025 · Connecting 18650 batteries in parallel can increase capacity and allow higher discharge rates. But there are some important safety ...

[Get Started](#)



## Monitoring two Li-Ion battery packs in parallel

1 day ago · Currently I measure the two parallel batteries through a single



LTC4150 (the batteries are connected through an ideal diode). Would it be possible to use the same approach with ...

[Get Started](#)

---

## Contact Us

For catalog requests, pricing, or partnerships, please visit:  
<https://www.persianasaranda.es>