

SolarInvert Energy Solutions

Wattage of solar cells per square meter



Overview

What is solar panel watts per square meter (W/M)?

Solar panel watts per square meter (W/m) measures the power output of a solar panel based on its size. Compare solar panels to see which generates most electricity per square meter. A higher W/m value means a solar panel produces more power from a given area. This can help you determine how many solar panels you need for your energy needs.

How do you calculate solar panel output in watts per square meter?

The formula to calculate the solar panel output and how much energy solar panels produce (in watts) using watts per square meter is as follows: Solar Panel Output (W) = Watts per Square Meter (W/m²) × Area of Solar Panel (m²).

How many Watts Does a solar panel produce per square foot?

Dividing the specified wattage by the square footage of the solar panel will give us just this result: The average solar panel output per area is 17.25 watts per square foot. Let's say that you have 500 square feet of roof available for solar panel installation.

How much energy does a square meter of solar panels generate?

On a clear day with high solar irradiance, a square meter of efficient solar panels can generate around 150-250 watt-hours (Wh) of energy in an hour. It translates to approximately 1.5-2.5 kWh per day. Remember that this is a rough estimate and can vary based on factors such as panel efficiency, geographic location, and weather conditions.

What is solar panel efficiency?

Solar panel efficiency is crucial for a solar power system's success. High-efficiency panels convert more sunlight into electricity, boosting overall output. To measure this efficiency, use solar panel Watts per square meter

(W/m). This metric shows how much power a solar panel produces per square meter of surface area under standard conditions.

How do you measure solar panel efficiency?

To measure this efficiency, use solar panel Watts per square meter (W/m). This metric shows how much power a solar panel produces per square meter of surface area under standard conditions. By knowing W/m, you can: Install solar panels and maximize your energy output! What is Solar Panel Efficiency?

Wattage of solar cells per square meter



How many watts of photovoltaic solar energy per square meter

May 21, 2024 · Photovoltaic solar energy can generate between 150 to 200 watts per square meter under optimal conditions. To elaborate, various factors influence this output, including ...

[Get Started](#)

How Much Power (Watts) does a Solar Panel ...

3 days ago · And pricing in solar is usually measured in dollars per watt (\$/W), so the total bill of your solar system is determined by the final wattage of your ...



[Get Started](#)



Solar Panel Output per Square Meter: Efficiency ...

2 days ago · Solar panels have become a cornerstone of renewable energy, but many wonder: How much power can a single square meter of solar panels ...

[Get Started](#)

Solar Panels Watts per Square Meter

Nov 9, 2023 · One of the key metrics is "watts per square meter." The kilowatt hours to amp hours calculator then converts the energy output of solar panels ...

[Get Started](#)



Solar Panels Wattage Calculated

The type of solar panel you choose also influences the solar panel's wattage per square meter. For example, suppose you opt for one of Shop Solar Kit's ...

[Get Started](#)

Solar Panel Cost in 2025: How to Estimate The ...

Jul 4, 2025 · In this article, we'll explore: Solar panel cost over time Price per Watt vs cost per kWh How to calculate the cost of solar panels How much do solar ...

[Get Started](#)



Solar Panel Watts Per Square Meter Explained

Solar panel watts per square meter (W/m) measures the power output of a



solar panel based on its size. Compare solar panels to see which generates most ...

[Get Started](#)

How Much Electricity Do They Produce? (2025)

5 days ago · The south of the country gets more sun in general, with an average of around 128.4 watts per square meter. Regions with high levels of solar ...

[Get Started](#)



Watts Per Square Meter Solar Panel - The Go-to ...

Aug 29, 2023 · On a clear day with high solar irradiance, a square meter of efficient solar panels can generate around 150-250 watt-hours (Wh) of energy ...

[Get Started](#)

Solar Panel Capacity: A Full Guide to Choosing ...

Feb 5, 2025 · Standard test conditions in which solar panel capacity is estimated

refer to the conditions of optimal sunlight with a temperature of 25°C, and ...

[Get Started](#)



Solar Panel Efficiency: Watts Per Square Meter Explained

Currently, the average efficiency of commercially available solar panels ranges between 15% and 20%. This translates to about 150 to 200 watts per square meter of solar panel. The Frontier of ...

[Get Started](#)

Solar Panel Output and Wattage Explained

May 22, 2025 · This includes a cell temperature of 25° Celsius, solar irradiance of 1,000 watts per square meter, and air mass of 1.5. Different manufacturers ...

[Get Started](#)



Solar Panel Calculator

It takes into account factors such as the daily energy needs of a household or



business, the efficiency of the solar panels, the average peak sun hours per day in the location where the ...

[Get Started](#)

Solar Panel Output , Green IOT

Standard test conditions are when there is a cell temperature of 25C°, and 1 kilowatt per square meter of solar energy shining on the panel. In terms of ...

[Get Started](#)



Understanding the Specifications of Solar Panels

...

Nov 17, 2023 · Here's a breakdown of the key specifications and guidance on how to interpret them: 1. Rated Wattage
The wattage of a solar panel ...

[Get Started](#)

Watts Per Square Meter Solar Panel - The Go-to ...

Aug 29, 2023 · How many Watts per Square Meter for a Solar Panel? Here is a

breakdown of how much energy a solar panel generates.

[Get Started](#)



Solar Panel Ratings Explained - Wattage, ...

Nov 11, 2024 · An "Air Mass" of 1.5 A "Solar Irradiance" of 1000 Watts per square meter (W/m^2) And a "Solar Cell Temperature" of 25°C . Manufacturers ...

[Get Started](#)

How much does solar energy generate per ...

Jul 11, 2024 · 1. Solar energy generation per square meter can vary significantly, but typical values indicate that 1 square meter of solar panels can produce ...

[Get Started](#)



How many watts per square meter is the top ...

Jul 28, 2024 · The maximum wattage per square meter for solar energy generation



is approximately 1000 watts, depending on location and conditions, ...

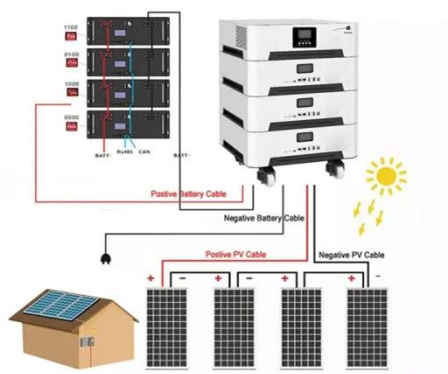
[Get Started](#)

Solar Panel Watts Per Square Foot: 'We (Finally) Did The Math'

2 days ago · Check the standard solar panel size (area) and the output wattage of the whole panel. Divide the solar panel wattage (for 100W, 150W, 170W, 200W, 220W, 300W, 350W, ...



[Get Started](#)



A Complete Guide To Solar Panel Output

Jun 11, 2023 · Working principle of a solar panel (Reference: saurenergy) 1. Solar Panel Output Per Day Work out how much electricity--measured in ...

[Get Started](#)

Solar Power per Square Meter Calculator

2 days ago · The average solar panel

output per area is 17.25 watts per square foot. Let's say that you have 500 square feet of roof available for solar panel ...

[Get Started](#)



Photovoltaics

Solar cells can generate 200 watts (watt-peak, Wp) per square meter. This is the status in 2024, the value has grown significantly in the last few years, in the year 2010 it was about 80 Wp/m².

[Get Started](#)

How to Understand Solar Panel Watts Per ...

Jun 14, 2023 · High-efficiency solar panels, such as those incorporating advanced technologies like heterojunction or multi-junction cells, can achieve more ...

[Get Started](#)



How much energy does a solar panel produce: per year, per day, per ...



Nov 5, 2024 · The higher the wattage, the more electricity your panel can generate. Our customers prefer solar panels in the 350 to 450-watt range for home. Solar panels deliver their ...

[Get Started](#)

Solar Panel Output Calculator , Get Maximum ...

Feb 29, 2024 · Use Solar Panel Output Calculator to find out the total output, production, or power generation from your solar panels per day, month, or in ...

[Get Started](#)



How to Calculate Solar Cell Efficiency , Complete ...

May 9, 2025 · Learn how to calculate solar cell efficiency with formulas and tips. Discover what affects performance and how to get the most out of your solar ...

[Get Started](#)



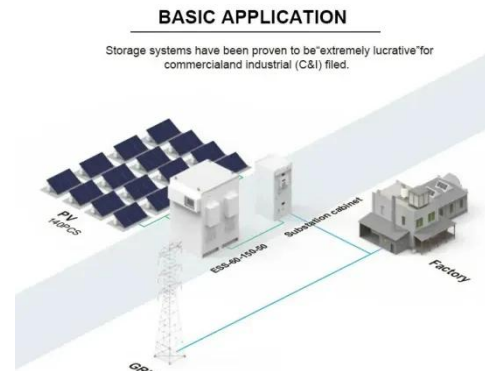
Solar Panel Power Per Square Meter: How to ...

Jul 16, 2025 · Final Words Calculating the solar panel power per square meter is an

essential step in understanding the efficiency and potential of solar energy

...

[Get Started](#)



The Output Watts Of Solar Panels

Mar 9, 2018 · The solar energy available to solar panel systems depends on a number of factors. Latitude, weather and the angle of incoming sunlight each ...

[Get Started](#)

Solar Panel Sizes And Wattage , Sizing, ...

Nov 27, 2022 · The size or dimensions of the solar panels, measured in height by width, will determine the number of solar panels that will fit on your roof and ...

[Get Started](#)



Contact Us

For catalog requests, pricing, or partnerships, please visit:

<https://www.persianasaranda.es>