

SolarInvert Energy Solutions

What does BMS battery pack mean



Overview

What is battery management system (BMS)?

Battery Management System (BMS) is the “intelligent manager” of modern battery packs, widely used in fields such as electric vehicles, energy storage stations, and consumer electronics.

What are BMS batteries used for?

BMS batteries are used in virtually every industry where lithium-ion batteries are found, including: Electric Vehicles (EVs) Ensures battery safety, efficiency, and extended driving range. Energy Storage Systems (ESS) Balances large-scale battery packs for home and commercial solar power systems.

How does a BMS protect a battery pack?

Monitoring battery pack current and cell or module voltages is the road to electrical protection. The electrical SOA of any battery cell is bound by current and voltage. Figure 1 illustrates a typical lithium-ion cell SOA, and a well-designed BMS will protect the pack by preventing operation outside the manufacturer’s cell ratings.

What does BMS stand for?

BMS stands for Battery Management System. It is an electronic control unit that monitors, manages, and protects rechargeable batteries, especially lithium-ion battery packs.

Do EV batteries need a BMS?

However, if you have multiple independent battery packs, each pack requires its own BMS to monitor and protect its cells. For example, in an EV with multiple battery modules, each module may have a dedicated BMS, or a centralized BMS may oversee all modules, depending on the system design.

Can I use lithium battery without BMS?

.

How do battery management systems work?

Battery management system (BMS) is technology dedicated to the oversight of a battery pack, which is an assembly of battery cells, electrically organized in a row x column matrix configuration to enable delivery of targeted range of voltage and current for a duration of time against expected load scenarios.

What does BMS battery pack mean

What is Ford BMS?

Feb 27, 2025 · What is Ford BMS? Ford BMS, or Ford Battery Management System, is a critical component in Ford's electric and hybrid vehicles. The BMS is responsible for monitoring and ...

[Get Started](#)



How To Choose A BMS For Lithium Batteries

Aug 22, 2022 · If you are looking to build safe-high performance battery packs, then you are going to need to know how to choose a BMS for lithium batteries. ...

[Get Started](#)



What Does ESS, BMS, and Inverter Mean in Solar Systems?

1 day ago · Get clear on ESS, BMS, and inverter roles with sizing rules and safety checks for solar system components. What is ESS in solar answered.

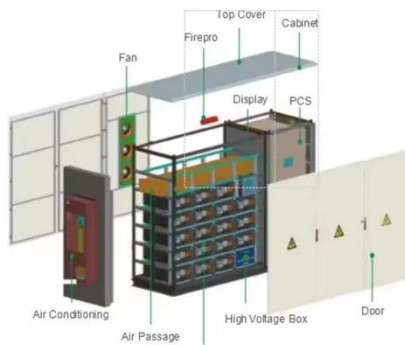
[Get Started](#)



BMS Battery Meaning Explained: The Smart Technology ...

Jun 2, 2025 · The BMS battery meaning refers to the integration of a Battery Management System (BMS) into a rechargeable battery pack, allowing it to be intelligently monitored, protected, ...

[Get Started](#)



What Does BMS Mean? (Battery Management ...

Mar 26, 2024 · From a smartphone to a laptop to an electric vehicle, BMS is a critical software unit devised in coordination with the battery, aimed at ...

[Get Started](#)

What Is BMS in a Battery Pack? And What Does It Do

May 27, 2025 · What Is BMS in a Battery Pack? A battery pack's battery management system (BMS) is arguably its most critical component. As the "brain" of the battery, the BMS ...

[Get Started](#)



LiFePO4 BMS: Understanding A Battery ...

Jul 4, 2023 · Final Thoughts The BMS is a crucial component of battery systems --

it monitors the battery cells and makes sure they're all functioning together ...

[Get Started](#)



What is a Modular Battery System & What is ...

Nov 5, 2022 · A modular battery management system (BMS) is a device that helps to protect Lithium-ion batteries from overcharging and deep discharge. It ...

[Get Started](#)



What Amp BMS Do I Need? Sizing Battery Management ...

What Amp BMS Do I Need? Sizing Battery Management Systems Are you in the market for a Battery Management System (BMS) but feeling overwhelmed by the sheer number of options ...

[Get Started](#)

What Is a BMS Battery and Why Need It , Grepow

Apr 23, 2025 · A Battery Management System (BMS) is a critical electronic

system integrated into rechargeable battery packs, especially lithium-ion ...

[Get Started](#)



What Does BMS Mean? A Comprehensive Guide - Renogy US

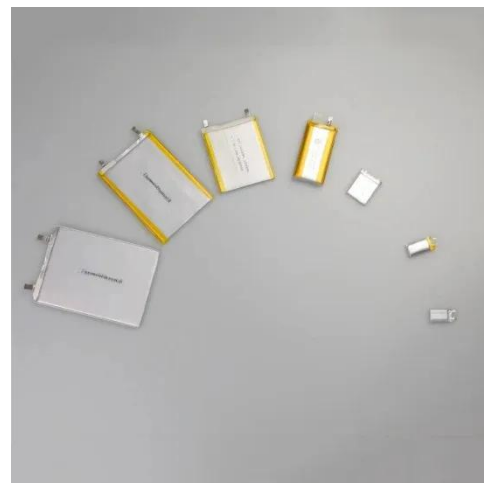
In this battery management system, one central BMS is connected to all battery packs directly. This system offers several benefits, such as it is the most budget-friendly system, as it ...

[Get Started](#)

What is a Battery Management System? Complete Guide to BMS ...

Aug 3, 2025 · A Battery Management System (BMS) is an electronic control unit that monitors and manages rechargeable battery packs to ensure safe operation, optimal performance, and ...

[Get Started](#)



Understanding BMS in Lithium Batteries: ...

GRADE A BATTERY

LiFePO4 battery will not burn when overcharged, over discharged, overcurrent or short circuited and can withstand high temperatures without decomposition.



Feb 9, 2025 · Though a BMS adds to the initial cost of a battery system, it pays off in the long run by maximizing battery life, performance, and safety. Users ...

[Get Started](#)

What is a Battery Management System (BMS)? - ...

1 day ago · Battery management system (BMS) is technology dedicated to the oversight of a battery pack, which is an assembly of battery cells, electrically ...

[Get Started](#)



BMS LiFePO4 Guide: Safety, Setup & Sizing

Aug 12, 2025 · Clear, practical guide to BMS LiFePO4: safety features, wiring basics, setup steps, and sizing so your LiFePO4 battery runs longer and safer.

[Get Started](#)



What Is a BMS Battery? A Complete Guide for Beginners and ...

Apr 23, 2025 · It is an electronic control unit that monitors, manages, and protects rechargeable batteries, especially lithium-ion battery packs. When we refer to a BMS battery, we're typically ...

[Get Started](#)



The Complete Guide to A Battery Management ...

Aug 31, 2023 · BMS Topology Centralized BMS topology, distributed BMS topology and modular BMS topology are three major topology types. The ...

[Get Started](#)

What Does BMS (Battery Management System) Mean?

4 days ago · What Does BMS (Battery Management System) Mean? Table of Contents Introduction Why is BMS a common term in lithium battery specs? You'll see "BMS included" ...

[Get Started](#)



Understanding Battery Management Systems ...

Sep 4, 2024 · An internal BMS is integrated directly into the battery pack



itself. This means the BMS is housed within the battery casing, where it seamlessly ...

[Get Started](#)

What is a Battery Management System (BMS)? A ...

Apr 9, 2025 · A Battery Management System (BMS) is an electronic system that manages and protects the battery pack within an electric vehicle. The system ...

[Get Started](#)



What Is A BMS (Battery Management System)?

Apr 14, 2021 · What Is a Battery Management System? A battery management system (BMS) is said to be the brain of a battery pack. The BMS is a set of ...

[Get Started](#)

Battery BMS: Understanding the Basics and its Importance

Understanding the basics of a Battery BMS is essential for anyone working with

batteries or considering implementing them into their operations. The components of a Battery BMS work ...

[Get Started](#)



Battery Management System (BMS) Detailed Explanation: ...

May 7, 2025 · Battery Management System (BMS) is the "intelligent manager" of modern battery packs, widely used in fields such as electric vehicles, energy storage stations, and consumer ...

[Get Started](#)

How does lithium battery BMS determine the ...

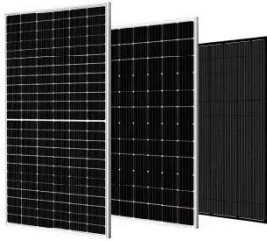
May 1, 2025 · To ensure the safe, stable, and efficient operation of battery packs, the Battery Management System (BMS) was developed, becoming an ...

[Get Started](#)



What Does BMS (Battery Management System) Mean?

4 days ago · What Exactly Is a Battery



Management System (BMS)? What is the basic definition of BMS? At its core, a Battery Management System is an electronic control unit that monitors ...

[Get Started](#)

Battery Management System , Functions

Understand Battery Management Systems (BMS): Explore how they work, key building blocks, and functions for efficient battery performance and safety.



[Get Started](#)



Guide to Understanding Battery Management ...

Sep 6, 2023 · This is where reliable battery management systems (BMS) can make all the difference in maintaining your battery pack's health. Here, we'll ...

[Get Started](#)

BMS and lithium battery balancing: What is it?

May 25, 2021 · The key function of a lithium battery BMS is cell balancing.

What is a conventional BMS and how is the Flash Balancing System different?

[Get Started](#)



What Is A Bms For Battery? Essential Guide & Benefits

Jul 27, 2025 · Have you ever wondered how your batteries stay safe and work well? That's where a BMS, or Battery Management System, comes in! A BMS is like a smart guardian for battery ...

[Get Started](#)

What Size Battery Management System Do I ...

Nov 2, 2022 · The question of what size battery management system (BMS) you need is a common one, and the answer depends on a few factors. The first is ...

[Get Started](#)



What is a Battery Management System (BMS)?

Jan 15, 2025 · Discover the essential components of a Battery Management



System (BMS) and how they ensure battery efficiency, safety, and longevity in ...

[Get Started](#)

What is a Battery Management System (BMS)?

May 5, 2025 · A Battery Management System (BMS) safeguards lithium-ion batteries by monitoring voltage, current, and temperature, preventing ...

[Get Started](#)



Contact Us

For catalog requests, pricing, or partnerships, please visit:
<https://www.persianasaranda.es>