

SolarInvert Energy Solutions

**What inverter should I use for a
fully charged 88v lithium
battery**



Overview

Do advanced lithium batteries need an inverter?

Special features for advanced batteries: Some advanced lithium batteries have a Battery Management System (BMS) that monitors and controls the battery. These might need an inverter that can communicate with the BMS to optimize charging and ensure safety.

What are the specifications of a lithium battery inverter?

Inverter Specifications: Charging Current: The inverter's charging current must match your lithium battery's recommended charging current. Exceeding this limit can damage the battery. Operating Voltage: The inverter's operating voltage range should be compatible with the nominal voltage of your lithium battery bank (e.g., 12V, 24V, 48V).

What is a lithium ion battery for a home inverter?

Lithium-ion batteries offer a more consistent discharge rate, ensuring that your inverter operates smoothly and efficiently. A lithium-ion battery for a home inverter can significantly enhance your home's energy storage capabilities.

Should you pair a lithium-ion battery with an inverter?

Before you decide to pair a lithium-ion battery with your existing inverter, it's essential to consider several factors. These include the inverter's voltage, charging algorithm, and overall compatibility with lithium-ion technology. Not all inverters are created equal.

Can a solar inverter be used with a lithium battery?

Integrating a solar inverter with a lithium battery can take your renewable energy setup to the next level. This combination allows for better energy storage, improved efficiency, and greater resilience during power outages. LiFePO4 batteries are particularly well-suited for solar applications because

their thermal stability and long cycle life.

How do I choose a good battery inverter?

Ideal Power Consumption: Look for an inverter with an efficiency rating that suits your needs. Lithium batteries are more efficient than lead-acid, so you might opt for a slightly less powerful inverter to optimize efficiency. **Low Battery Cutoff (LBC):** These settings protect the battery from over-discharge and over-charging.

What inverter should I use for a fully charged 88v lithium battery



How to Properly Charge My Lithium Battery?

Aug 27, 2021 · Or just charge them separately. If you found that the battery bank's total capacity could not reach what it should be after charging the pack ...

[Get Started](#)

Inverter Battery Voltage Chart

Nov 9, 2024 · An inverter battery voltage chart shows the relationship between a battery's charge level and its voltage. Battery voltage charts describe the ...

[Get Started](#)



Lithium Battery for Inverter: Pros, Specs, and Tips

Jun 24, 2025 · Looking for the best power storage for your inverter? Lithium offers unmatched performance, a longer lifespan, and better efficiency than ...

[Get Started](#)



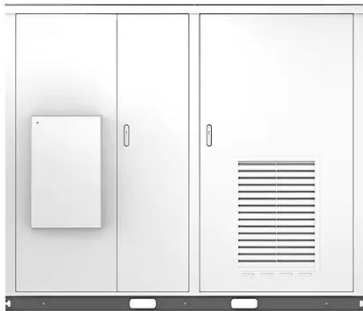
Do I Need to Fully Charge a Lithium Ion Battery ...

Oct 1, 2022 · Lithium-ion batteries are one of the most popular types of batteries on the market today. Many people believe that it is necessary to fully charge a ...

[Get Started](#)



Solar



What will happen if I charge a lithium battery ...

Aug 5, 2024 · Related Product: Keep your RV lithium battery charged at home or in emergencies with the portable NOCO Genius 1 (click to view on Amazon) In ...

[Get Started](#)

Do Lithium Batteries Need Full Charge First Time?

Jun 16, 2025 · Part 1. Do lithium batteries need to be fully charged before first use? The short answer is: No, lithium batteries do not need to be fully charged before first use. Unlike older ...

[Get Started](#)



Which Inverter Is Best for a 100Ah Battery?

Feb 5, 2025 · Selecting the best inverter for a 100Ah battery involves



understanding the power requirements of your devices, the type of battery you have, and the inverter's efficiency. ...

[Get Started](#)

Debunking Lithium-Ion Battery Charging Myths: ...

May 5, 2025 · Explore the truth behind common lithium-ion battery charging myths with our comprehensive guide. Learn the best practices to enhance ...

[Get Started](#)



Understanding the Basics of Connecting Lithium ...

Oct 8, 2024 · Connecting a lithium battery to an inverter is crucial for converting the stored DC (Direct Current) energy into usable AC (Alternating Current) for ...

[Get Started](#)

5. Charging algorithms

Nov 27, 2024 · It is not necessary to use the VE.Smart sense feature, or buy a Smart Battery Sense to make sure a

Smart Charger stops charging a Victron Smart Lithium Battery below ...

[Get Started](#)



48V Battery Guide: Charging, Safety and More

Jan 31, 2024 · The automatic transfer switch of an inverter, which is a crucial feature, facilitates the switch between different power sources. In a ...

[Get Started](#)

How to Know If Inverter Battery Fully Charged?

Aug 21, 2023 · If the voltmeter shows 13 volts, the battery is fully charged. If it reads 11 volts or less, the battery is drained. Why is the Inverter Battery not ...

[Get Started](#)



Lithium (LiFePO4) Battery Runtime Calculator

Mar 3, 2023 · Calculator assumption
Lithium battery discharge efficiency:

Lithium battery parameters

Product capacity: 100Ah

Product size: 135*197*35mm

Product weight: 1.82kg

Product voltage: 3.2V

internal resistance: within 0.5



95% (Source) Inverter efficiency: 90%
how to use Lithium Battery runtime ...

[Get Started](#)

A Comprehensive Guide to LiFePO4 Voltage Chart - Renogy US

Lithium Iron Phosphate (LiFePO4) batteries have revolutionized energy storage with their exceptional performance, longevity, and safety features. At the heart of understanding and ...



[Get Started](#)

Calculate Battery Size For Any Size Inverter ...

Mar 3, 2023 · So I have made it easy for you, use the calculator below to calculate the battery size for 200 watt, 300 watt, 500 watt, 1000 watt, 2000 ...

[Get Started](#)

Do I need a special inverter for Lithium battery?

May 20, 2024 · Discover if you need a special inverter for a lithium battery. Learn about the important factors to consider for compatibility with your battery.

[Get Started](#)



How to Determine If Your Lithium Battery Is Fully Charged

Dec 12, 2023 · Determining if your lithium battery is fully charged is essential for maintaining its health and performance. A fully charged lithium battery typically reaches a voltage of about 4.2 ...

[Get Started](#)

Determining the Solar and Inverter Size Needed ...

Jul 29, 2025 · This guide will walk you through everything you need to know to calculate the optimal Size of your solar and inverter setup to charge batteries ...

[Get Started](#)



What Voltage Should I Charge A Lithium-Ion Battery? Safe ...



- ✓ 50KW/100KWH
- ✓ HIGHER POWER OUTPUT IN OFF-GRID MODE
- ✓ CONVENIENT OPERATION & MAINTENANCE
- ✓ PRE-WIRED

Mar 22, 2025 · What Is the Recommended Voltage for Charging a Lithium-Ion Battery? The recommended voltage for charging a lithium-ion battery is typically between 4.2V and 4.3V per ...

[Get Started](#)

Car Battery Voltage Chart

Mar 4, 2024 · A car battery voltage chart displays the relationship between a battery's charge level and its corresponding voltage. A fully charged car ...

[Get Started](#)



A guide to lithium battery full charge voltage ...

2 days ago · What is full charging voltage? The most significant LiFePO4 battery full charge voltage a battery can achieve when fully charged is called full ...

[Get Started](#)

Lithium Ion Battery Voltage Chart: A Comprehensive Guide

Jun 22, 2025 · A fully charged lithium-ion battery has a voltage level of around 4.2

volts, while a battery with 50% charge has a voltage level of around 3.7 volts. The voltage level and ...

[Get Started](#)



The Complete Guide to Lithium-Ion Battery ...

Nov 14, 2023 · Nominal Voltage: This is the battery's "advertised" voltage. For a single lithium-ion cell, it's typically 3.6V or 3.7V. Open Circuit Voltage: This is ...

[Get Started](#)

Optimal Lithium Battery Charging: A Definitive ...

Mar 12, 2024 · Unlock the secrets of charging lithium battery packs correctly for optimal performance and longevity. Expert tips and techniques revealed in our ...

[Get Started](#)



How to Choose the Right Inverter for Different Load Types



The inverter's input voltage range must accurately match the output voltage range of the power supply (such as battery packs or solar panel arrays). For example, for common 12V, 24V, or ...

[Get Started](#)

What Will An Inverter Run & For How Long?

Mar 3, 2023 · So I'm gonna explain to you guys in simple words about what you can run on your any size inverter and what are the key point to keep in mind. ...

[Get Started](#)



What amp should I charge my LiFePO4 battery?

Feb 15, 2023 · Figuring out what current you should charge your LiFePO4 battery is easy. There are two factors to consider: The recommended charge current ...

[Get Started](#)

Compatibility of Lithium-Ion Batteries with ...

Lithium-ion batteries are a type of rechargeable battery that has gained

widespread use because their high energy density and efficiency. Unlike ...

[Get Started](#)



Battery Compatibility

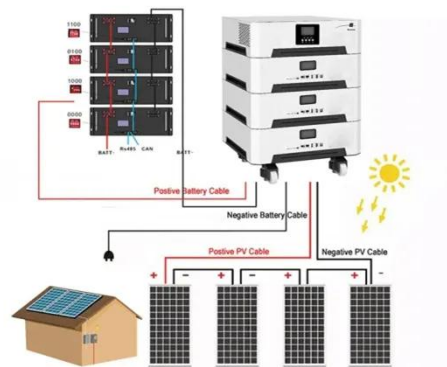
Jul 16, 2025 · Batteries using a BMS that blocks charge, or discharge current, or sets CCL to 0 when full, can trigger a number of confusing or misleading inverter/charger warnings and alarms.

[Get Started](#)

48V Battery Full Charge Voltage Chart: What Matters?

Jun 22, 2025 · A 48V AGM battery should be considered fully charged when its voltage level reaches 54.6V. However, the voltage range for a fully charged AGM battery can vary ...

[Get Started](#)



1500 Watt Inverter: Battery Sizing Guide

Jul 15, 2023 · How many batteries do I need for a 1500-watt inverter? In short,

12.8V 200Ah



For 1500 watt inverter you'll need two 12V 100Ah lead-acid batteries connected in ...

[Get Started](#)

Importance of Compatibility Between Inverter ...

Oct 13, 2024 · Modern inverters designed for lithium batteries often come equipped with smart technology that allows for better monitoring and control of ...

[Get Started](#)



Contact Us

For catalog requests, pricing, or partnerships, please visit:
<https://www.persianasaranda.es>