

SolarInvert Energy Solutions

What is a mobile base station



Overview

A base station is an integral component of wireless communication networks, serving as a central point that manages the transmission and reception of signals between cellular networks and mobile devices. What is a mobile base station?

A mobile base station, also called a base transceiver station (BTS), is a fixed radio transceiver in any mobile communication network or wide area network (WAN). The base station connects mobile devices to the network and routes them to other terminals in the network or to the core network of a mobile operator. [Read more Explore Mobile base.](#)

What is a base station in a telecommunications network?

A base station is a critical component in a telecommunications network. A fixed transceiver that acts as the central communication hub for one or more wireless mobile client devices. In the context of cellular networks, it facilitates wireless communication between mobile devices and the core network.

What is a wireless base station?

A wireless base station is an important component of cellular networks. It serves as a hub that connects mobile devices to the broader network infrastructure, enabling seamless communication between devices and ensuring a reliable and efficient wireless connection for end users.

What are base stations & cell towers?

Base stations and cell towers are critical components of cellular communication systems, serving as the infrastructure that supports seamless mobile connectivity. These structures facilitate the transmission and reception of signals between mobile devices and the wider network, enabling voice calls, text messages, and data services.

Why are base stations important?

Base stations are the backbone of modern telecommunications networks, providing the essential infrastructure for wireless communication. They enable mobile devices to connect to the network, manage traffic efficiently, and ensure robust and reliable connectivity across wide areas.

How do base stations work?

Base stations use antennas mounted on cell towers to send and receive radio signals to and from mobile devices within their coverage area. This communication enables users to make voice calls, send texts, and access data services, connecting them to the wider world. Network Management and Optimization

What is a mobile base station



Understanding the Basics: What is a Base ...

Aug 19, 2024 · A Base Transceiver Station (BTS) is a critical component of mobile telecommunication systems. It serves as the primary connection point ...

[Get Started](#)

What is a base station? Basic building blocks of cellular

Jul 26, 2023 · Call Routing: Base stations act as intermediaries between mobile devices and the core network. They facilitate call routing, authentication, encryption, and other essential ...

[Get Started](#)



Understanding Base Transceiver Stations: The Backbone of Mobile

Jan 1, 2025 · A Base Transceiver Station (BTS) is a piece of equipment that facilitates wireless communication between a mobile device and a network. Essentially, it acts as a bridge by ...

[Get Started](#)



Cellular Base Stations

Sep 14, 2015 · As you drive along the highway, you may notice cellular towers or cellular base stations appearing every few miles. A base station is the ...

[Get Started](#)



What Is A Base Station?

Apr 22, 2024 · A base station is an integral component of wireless communication networks, serving as a central point that manages the transmission and reception of signals between ...

[Get Started](#)



Base Transceiver Station: Core Functionality Explained

Apr 5, 2025 · Discover what a Base Transceiver Station is and how it's pivotal in mobile communication networks. Unlock the essentials of BTS functionality here.

[Get Started](#)



What is a Base Station?

Apr 1, 2023 · The electromagnetic waves emitted by base stations and mobile phones are like air, filling us all around.

Everyone knows mobile phones, ...

[Get Started](#)



Base Station Definition

Sep 11, 2023 · A base station is a fixed wireless device that serves as a hub for other wireless devices and provides a bridge to another network. In a ...

[Get Started](#)



✓ IP65/IP55 OUTDOOR CABINET

✓ OUTDOOR CABINET WITH AIR CONDITIONER

✓ OUTDOOR ENERGY STORAGE CABINET

✓ 19 INCH

What is a Mobile Switching Center and How ...

The Role of the Mobile Switching Center (MSC) Set between the base station and the Public Switched Telephone Network (PSTN), the Mobile Switching Center ...

[Get Started](#)



Base Stations and Cell Towers: The Pillars of ...

May 16, 2024 · Base stations and cell towers are critical components of cellular

communication systems, serving as the infrastructure that supports seamless ...

[Get Started](#)



What Is Base Station in Mobile Communication? - The Heart ...

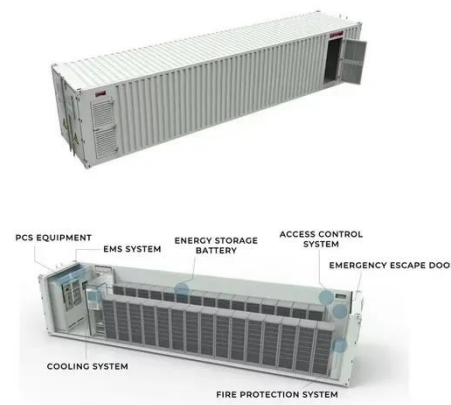
Jan 11, 2025 · At the heart of this system lies the base station, a crucial component that enables seamless communication between mobile devices and the network. In this blog post, we will ...

[Get Started](#)

Types and Applications of Mobile ...

Oct 11, 2024 · Mobile communication base station is a form of radio station, which refers to a radio transceiver station that transmits information between mobile ...

[Get Started](#)



Base Stations

Jul 23, 2025 · The present-day tele-space is incomplete without the base stations



as these constitute an important part of the modern-day scheme of wireless ...

[Get Started](#)

What is a Base Station?

Jan 18, 2022 · A base station is a common term used in telecommunications for a radio receiver with one or more antennae. While the base station has many ...



[Get Started](#)



What is the relationship between the Base station and mobile ...

Relationship between the Base station and mobile switching centre A mobile switching center (MSC) is the centerpiece of a network switching subsystem (NSS). The MSC is mostly ...

[Get Started](#)

What is a 5G Base Station?

Jun 21, 2024 · These base stations are pivotal in delivering the high-speed, low-

latency connectivity that 5G promises. A 5G base station is a critical ...

[Get Started](#)



IoT Glossary: Base Station Controller Explained

May 11, 2022 · A base station is a radio receiver that may have one or multiple antennas. It was first used in mobile telecommunication networks.

[Get Started](#)

Mobile base station , Application

A mobile base station, also called a base transceiver station (BTS), is a fixed radio transceiver in any mobile communication network or wide area network (WAN). The base station connects ...

[Get Started](#)



RBS (radio base station)

Jun 12, 2023 · A Radio Base Station (RBS), also known as a base transceiver station (BTS), is a key component of a



cellular network infrastructure. It serves ...

[Get Started](#)

Mobile Base Station Solutions

Feb 24, 2025 · Mobile base station solutions are a critical component of modern telecommunications infrastructure, enabling the provision of wireless communication services ...

[Get Started](#)



What is Base Station?

Nowadays, networking has become a crucial part of our daily lives. To implement network services for users, base station plays an essential role to constitute a ...

[Get Started](#)

What is a Base Station?

Jun 22, 2024 · A base station can refer to any of the following: 1. In the computer networking realm, a base station is the

central hub for wireless network ...

[Get Started](#)



 **LFP 12V 100Ah**



What is a Cell Site? Why cell sites are essential.

What is a cell site? A cell site is also known as a cell tower, cell phone tower, cellular tower, communication tower, or mobile base station, and connects a ...

[Get Started](#)

Types of Base Stations

Jul 23, 2025 · Base stations are one of the widely used components in the field of wireless communication and networks. It is an access point or base point of a ...

[Get Started](#)



Mobile Base Station Solutions

Feb 24, 2025 · In a 5G network, a mobile base station plays a critical role in providing high-speed, low-latency

communications to mobile devices. 5G mobile base stations use advanced ...

[Get Started](#)



Understanding Wireless Base Stations: Definition ...

Sep 8, 2023 · Wireless base stations are important components of cellular communication networks. They serve as central hubs that provide wireless ...

[Get Started](#)



Mobile Networks Explained , Tarang Sanchar

Overview Mobile phones work by sending and receiving low power radio signals. The signals are sent to and received from antennas that are attached to radio ...

[Get Started](#)

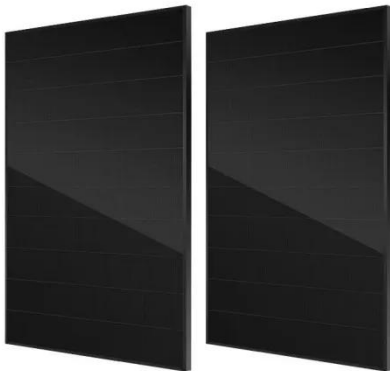


What Is a Base Station and Its Role in Enhancing ...

When we talk about a base station, we're diving into the heart of communication

technology. It's essentially a fixed point of communication within a network ...

[Get Started](#)



What is a Base Station in Telecommunications?

What is a Base Station? A base station is a critical component in a telecommunications network. A fixed transceiver that acts as the central ...

[Get Started](#)

Cell sites and cell towers in a mobile cellular ...

Nov 17, 2019 · The base stations represent the radio part of the mobile network, and one base station typically contains multiple cells which operate on specific ...

[Get Started](#)



Contact Us

For catalog requests, pricing, or partnerships, please visit:

<https://www.persianasaranda.es>