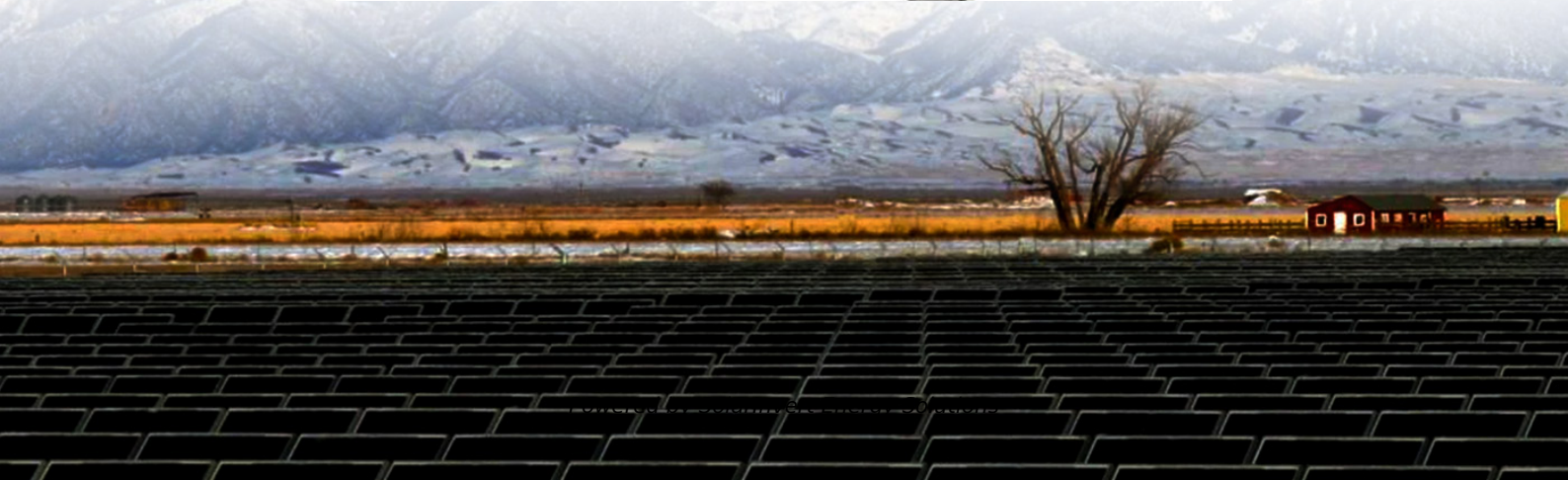


SolarInvert Energy Solutions

Will the battery be over-discharged when using an inverter



Overview

To understand the difference between an inverter and an inverter charger, let us look at how they operate, The following explanation will highlight their similarities and differences. It will also make clear why invert.

What are the problems with Inverter Batteries?

Inverter batteries can face several problems. Identifying these issues early helps in battery management. Here are some common problems:

Overcharging: This can damage the battery. It reduces its life. Undercharging: The battery doesn't get enough charge. It affects performance.

Can an inverter overcharge a battery?

Charging is similar to other batteries, and there is also the potential to overcharge. Ideally the system should have overload protection built in. Once the battery is full, the charging should stop. A poorly designed inverter might overcharge the battery however. So the best way to avoid this is to use a charge controller.

Why are Inverter Batteries important?

Inverter batteries are crucial for power backup. They need proper care. Battery management ensures they last longer and perform well. You can avoid frequent replacements. Let's explore more about keeping your inverter battery healthy. Healthy batteries provide consistent power supply. They reduce chances of sudden power loss.

Can a battery be charged with an inverter?

connecting an inverter with the battery will not do the harm to your battery while it's charging unless the battery is about to fully drained or it has reached its discharged limit like a lead-acid battery which only has a DOD limit of 50% Is it safe?

.

How does an off grid inverter work?

In an off grid system, the inverter uses a battery bank to run whatever you load onto it. The inverter does not charge the battery. The inverter takes power from the battery to run appliances. Batteries in off grid systems can be charged by solar panels, a generator or another power source. Batteries can even be charged by electricity.

What happens if your inverter is not turned off?

However, improper handling can lead to battery drainage, causing inconvenience and additional costs. Ensuring the inverter is switched off when not needed can prevent unnecessary battery usage. Regularly checking and maintaining the battery's health can extend its lifespan and efficiency.

Will the battery be over-discharged when using an inverter



How Long Will a 12V Battery Last When Using an Inverter

Mar 13, 2025 · Understanding how long a 12V battery lasts when using an inverter depends on multiple factors, including battery capacity, inverter efficiency, and power consumption.

[Get Started](#)

Will a car inverter drain the car battery?

Dec 10, 2024 · The rate at which a power inverter consumes power from a battery is affected by a number of factors, including the power of the inverter, the load ...



[Get Started](#)



How Long Will a 12V Battery Last with an Inverter?

Mar 10, 2025 · Discover how long a 12V battery lasts with an inverter, factors affecting runtime, and tips to maximize battery efficiency.

[Get Started](#)

Battery Runtime Calculator ,

How Long Can A ...

Feb 21, 2024 · The Battery Runtime Calculator is an indispensable tool for anyone using batteries for power supply, be it in RVs, boats, off-grid systems, ...

[Get Started](#)



How Long Will a Battery Last with an Inverter? Calculate Your ...

Mar 13, 2025 · An inverter battery lasts about 5 to 10 hours when fully charged. The backup time depends on the battery capacity and the load, which is the total energy consumption. You can ...

[Get Started](#)

Battery Runtime Calculator: How Long Does ...

May 26, 2023 · How long will your battery last? find out with our easy-to-use battery runtime calculator.. (12v, 24v, 50ah, 150ah, 100ah, 200ah, 50ah)

[Get Started](#)



What happens to excess power when batteries are full?

Aug 18, 2025 · Yes, provided there is useful sun shining on the array the



controller will allow whatever amperage through to the inverter by way of the batteries as is available. If your array ...

[Get Started](#)

Charging Battery While Connected To Inverter ...

Mar 3, 2023 · connecting an inverter with the battery will not do the harm to your battery while it's charging unless the battery is about to fully drained or it has ...

[Get Started](#)



How Long Will A 12v Battery Last With An ...

Jan 11, 2025 · Car batteries are not designed to be discharged over time and I don't recommend that you use one except in exceptional circumstances and ...

[Get Started](#)

Battery Over-discharged error on Renogy setup

Dec 31, 2023 · I've been having an issue with Battery Over-discharged errors. The last two times it's happened I've been

using the van for about a week ...

[Get Started](#)



How Long Will 12V Battery Last When Using a ...

Oct 14, 2024 · Inverters are often used in conjunction with batteries to power various appliances and devices. In a previous blog we discussed: What Can a ...

[Get Started](#)

Power Inverter Troubleshooting

Jun 7, 2022 · Power inverters or digital inverters are very effective when using the battery as a larger power source. They will help you convert DC power from ...

[Get Started](#)



10 Tips for Using a Power Inverter Correctly

Jan 24, 2020 · Power inverter that converts DC power to AC power provides a great convenience people's lives,



especially in home appliances, such as air conditioner, refrigerator, TV, VCR, ...

[Get Started](#)

Depth of Discharge: How It Impacts Your ...

Oct 28, 2024 · Over-discharging your battery can lead to sulfation (for lead-acid batteries) or permanent capacity loss (for lithium-ion batteries). Regularly ...



[Get Started](#)



How Long Will 12V Battery Last With Inverter? 3 ...

Since we couldn't find a realistic test of common batteries with common power consumption, RVgoer decided to test the 3 most common 12V batteries. We ...

[Get Started](#)

How to Store Inverter Battery When Not in Use

Battery Self-Discharge Rate The following scenario makes it clear why inverter batteries must have some

power left when stored. Suppose you want to store ...

[Get Started](#)



What to Do When Battery Over Discharged or ...

Mar 19, 2025 · An over discharged battery is a battery that has been drained below its recommended minimum voltage. When this happens, the battery's ...

[Get Started](#)

Inverter Sizing: Can Your Inverter Be Too Big For Your Battery ...

Apr 14, 2025 · An inverter can indeed be too big for your battery bank. An oversized inverter might waste energy and raise operating costs. To prevent this, ensure the inverter size matches your ...

[Get Started](#)



✓ IP65/IP55 OUTDOOR CABINET

✓ IP54/55

✓ OUTDOOR ENERGY STORAGE CABINET

✓ OUTDOOR MODULE CABINET

Charging Battery While Connected To Inverter



Oct 19, 2022 · There are two scenarios to consider when charging the battery while the inverter generates alternating current to the loads connected to the ...

[Get Started](#)

How to Safely Connect a Battery to an Inverter: A ...

Apr 13, 2025 · Learn how to safely connect your batteries to your inverter with our guide. Avoid common wiring mistakes to optimize performance and extend ...

[Get Started](#)



Does Inverter Overcharge Battery?

Aug 22, 2023 · Does an inverter overcharge the battery? An inverter itself does not directly cause battery overcharging. However, if the inverter is connected ...

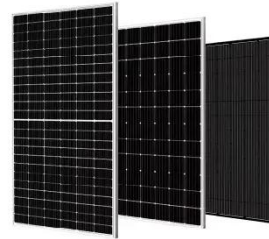
[Get Started](#)

How Long Will A Battery Last Using An Inverter? Calculate ...

Mar 27, 2025 · What Factors Determine How Long a Battery Will Last with an Inverter? The duration a battery will last

with an inverter is influenced by various factors such as battery ...

[Get Started](#)



Is Your Inverter Overcharging Batteries?

Overcharging your inverter batteries is a very real possibility. While there are several variables to be concerned with when charging a deep cycle battery, the results will always be the same. If ...

[Get Started](#)

Complete Guide to Inverter Batteries - NPP POWER

Oct 23, 2024 · Inverter batteries is a rechargeable battery built to supply backup power for inverters, which convert direct current (DC) into alternating current (AC). These batteries store ...

[Get Started](#)



Choosing the Best Inverter Battery

An inverter battery is a crucial part of any power backup solution. The choice

of the right battery for your inverter directly influences the performance and ...

[Get Started](#)



How Long Will A Battery Power An Inverter? Key Factors For ...

Mar 13, 2025 · To calculate runtime, use the formula: (Battery capacity in watt-hours) divided by (inverter load in watts). Understanding these factors can help you estimate how long a battery ...

[Get Started](#)



How Long Will a Deep Cycle Battery Last with an Inverter:

...

Dec 30, 2024 · Cycle count reflects how often a battery is charged and discharged, with more cycles leading to reduced performance over time. According to a study by the National ...

[Get Started](#)

What is Deep Discharge? Build A Simple Circuit ...

Sep 19, 2019 · When a battery is

charged, it consists of potential electric energy stored and when it is discharged, you are reversing the charging process and ...

[Get Started](#)



 **LFP 280Ah C&I**

How to Fix Solar Battery Over Discharge: A ...

Aug 27, 2023 · Discover how to fix solar battery over discharge with our comprehensive guide. Gain useful insights on prevention and optimal ...

[Get Started](#)

How to Keep Inverter from Draining Battery

Sep 29, 2024 · An inverter may drain the battery quickly due to overloading, poor battery maintenance, or using inefficient appliances. Ensure the battery is fully ...

[Get Started](#)

1mwh (500kw/1mw)
AIR COOLING
ENERGY STORAGE CONTAINER



How to Prevent Inverter from over-discharge ...

Aug 27, 2020 · No, you will use the relay output port of the Victron BP to turn the inverter off when the batteries are too

low, you should never ...

[Get Started](#)



How long will a battery last with an inverter

Mar 19, 2024 · The actual capacity of the battery when discharged at a rate of 1C (strong current) may be less than 40-70% of the nominal capacity (at a rate of ...

[Get Started](#)



Contact Us

For catalog requests, pricing, or partnerships, please visit:
<https://www.persianasaranda.es>