

SolarInvert Energy Solutions

Wireless outdoor base station settings



Overview

How do I set up a Wyze base station?

In the Wyze app, tap on your Wyze Base Station. Tap on the Settings gear on the top right. Tap Device Info > Wi-Fi Network. Follow the on-screen steps to finish the setup. Now that your Wyze Base Station is all set up, it's time to add your Wyze Cam Outdoor. Move on to the next article, Wyze Cam Outdoor Setup Guide.

Can I use Wyze base station on a Wi-Fi Connection?

Once it's set up, you can use Wyze Base Station on a Wi-Fi connection - no need for a router. To do this: In the Wyze app, tap on your Wyze Base Station. Tap on the Settings gear on the top right. Tap Device Info > Change Connection. You'll see one of the following screens: Select your network.

What is the TP-Link outdoor wireless base station?

The TP-LINK Outdoor Wireless Base Station pairs professional performance with user-friendly design, making it the perfect solution for both business and home users. Two external RP-SMA antenna interfaces allow the Outdoor Wireless Base Station to integrate seamlessly with TP-LINK's line of sector and dish antennas.

How do I pair a Wyze camera with a base station?

In the Wyze app, tap Begin Setup. If you have more than one Wyze Base Station, or yours is already full, you'll be prompted to select the one you'd like to pair the camera with. Press the SYNC button on the bottom of the Wyze Cam Outdoor. The camera will say "Pairing is in progress."

How do I add a Wyze Cam Outdoor?

Now that your Wyze Base Station is set up, it's time to add your Wyze Cam Outdoor. It's an easy process, as it relies on Wyze Base Station for network communication. Fully charge your Wyze Cam Outdoor before setting it up the

first time. This can take up to 4 hours. Once fully charged the light will switch from flashing red to solid red.

Can the wbs510 be paired with a TP-Link dish antenna?

Where long- distance wireless data transmission is necessary, the WBS510 can be paired with a TP-LINK dish antenna, allowing it to transfer data over distances of up to 50 km *. Pharos Base Stations works seamlessly with TP-LINK dish and sector antennas to provide efficient PtP and PtMP data transmission.

Wireless outdoor base station settings



How do I factory reset Wyze Cam Outdoor? - Wyze

Nov 23, 2021 · For security reasons, you cannot factory reset it. Unlike other Wyze Cam devices, Wyze Cam Outdoor cannot be hard reset. In the event that the camera is stolen, it cannot be ...

[Get Started](#)

TP Link Technologies WBS510 5GHz 300Mbps Outdoor Wireless Base Station

User manual instruction guide for 5GHz 300Mbps Outdoor Wireless Base Station WBS510 TP-Link Technologies Co., Ltd.. Setup instructions, pairing guide, and how to reset.



[Get Started](#)

Is Wyze Base Station wired or wireless?

Aug 4, 2022 · A wired connection ensures you have the most stable and reliable connection between your Wyze Base Station, Wyze Cam Outdoor, and router. To use your base station ...



[Get Started](#)

Amazon : Wifi Base Station

Amazon : wifi base stationCarbon Neutral Certified by SCS Global Services enables companies to demonstrate carbon neutrality for their products by reducing carbon emissions ...

[Get Started](#)



Newentor Wireless Weather Station with Atomic ...

Newentor Weather Station Wireless Indoor Outdoor User Manual Table of Contents Package Contents Device Setup Mounting the Sensor Display ...

[Get Started](#)



How to set up your Roku Outdoor Camera SE

Feb 27, 2025 · In addition to your Roku Outdoor Camera SE, base station, and included accessories, you will need the following: Power: Your base station ...

[Get Started](#)



Springfield Springfield-Preciset emp-91756-User-Manual ...

5 days ago · BASE STATION REMOTE SENSOR FEATURES AND SPECIFICATIONS



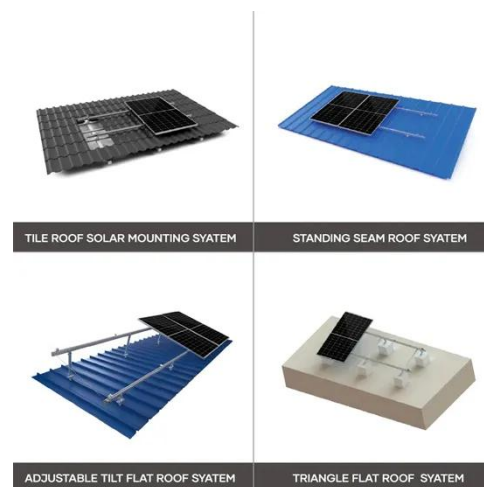
BASE STATION Indoor / wireless outdoor temperature, oc / OF selectable Indoor / wireless outdoor ...

[Get Started](#)

Wyze Cam Outdoor Getting Started

Wyze Base Station Setup Guide (French-CA) Wyze Cam Outdoor Mounting Guide (French-CA) Wyze Cam Outdoor Quick Start Guide Wyze Cam Outdoor Features About the Wyze Base ...

[Get Started](#)



Wyze Cam Outdoor Quick Start Guide

Feb 13, 2024 · This guide is a short user manual with the basics about Wyze Cam Outdoor, including: What's in the box for Wyze Cam Outdoor. How to download the Wyze app. A ...

[Get Started](#)

SPRINGFIELD PRECISETEMP 91756 USER ...

Page 2: Remote Sensor REMOTE SENSOR
o 433 MHz wireless transmission

frequency o Wireless data transmission
to base station up to 100 ft. (range ...

[Get Started](#)



Outdoor Camera Base Station User Manual

Sep 18, 2024 · If Wi-Fi is selected as the network access method for the base station, make sure that the phone is already connected to the Wi-Fi network and that the phone is placed as close ...

[Get Started](#)

Understanding Wyze Outdoor Camera: Do You Need a Base Station?

Nov 23, 2024 · However, many potential users wonder whether they need a base station to use this innovative device effectively. This article delves deep into the Wyze Outdoor Camera's ...

[Get Started](#)



Wyze Cam Outdoor Setup Guide

Jul 10, 2025 · In the Wyze app, tap



Home, then tap + plus sign on the top right. On the Add menu, tap Device. Tap Cameras > Battery Camera > Wyze Cam ...

[Get Started](#)

WIRELESS WEATHER STATION

Jun 11, 2018 · If a key is pressed before the weather station receives the temperature signal, or battery change happened on remote sensor side, please hold the base station + button for 3s ...

[Get Started](#)



WBS510 , 5GHz 300Mbps Outdoor Wireless Base ...

May 10, 2020 · Two external RP-SMA antenna interfaces allow the Outdoor Wireless Base Station to integrate seamlessly with TP-LINK's line of sector ...

[Get Started](#)

Wisnetworks WIS-S516AC Outdoor Wireless Base Station

...

Sep 11, 2024 · Using a web browser access 192.168.1.2 (wait a few seconds after device power up). When login page appears enter "admin" in both the username and password fields. For ...

[Get Started](#)



NEWENTOR WEATHER STATION INSTRUCTIONS ...

If your Newentor Weather Station model Q9 remote has stopped working even after replacing the batteries, try the following steps: 1. Bring the remote sensor ...

[Get Started](#)

Newentor Weather Station Wireless Indoor ...

Newentor Weather Station Wireless Indoor Outdoor Thermometer User Manual Table of Contents Getting Started Setting Up the Weather Station Setting Up ...

[Get Started](#)



Basestation

A base station is providing wireless access toward fixed devices, e.g., a nonmobile home base station/access

point. The geolocation of both the base station and the fixed device is well known.

[Get Started](#)



**2MW / 5MWh
Customizable**

Connecting Your Arlo Camera to the Base Station: A ...

Jun 14, 2025 · Understanding Arlo Cameras And Base Stations Before delving into the setup process, it's crucial to gain a clear understanding of what an Arlo camera and base station are ...

[Get Started](#)



Wyze Cam Outdoor full setup guide

Apr 24, 2022 · Connect your mobile device to the same WiFi network your Base Station will be set up to. In the Wyze app, tap Home, then tap + plus sign on ...

[Get Started](#)

Fix Wyze Base Station Not Connecting - Complete ...

May 22, 2025 · Struggling with your

Wyze Base Station not connecting?
Follow this 2025 guide with easy, expert
fixes to restore your smart home system
fast.

[Get Started](#)



Wyze Base Station Setup

Jan 24, 2023 · To set up your Wyze base station, you can connect it to your network via the ethernet cable. Next, configure it with the Wyze app.

[Get Started](#)

UniFi Wi-Fi BaseStation Quick Start Guide

Dec 5, 2024 · Outdoor Installation
Requirements o Shielded Category 5 (or
above) cabling should be used for all
outdoor wired Ethernet connections and
should be grounded through the AC ...

[Get Started](#)



WBS510 , 5GHz 300Mbps Outdoor Wireless Base ...

May 10, 2020 · TP-LINK's 5GHz 300Mbps
* Outdoor Wireless Base Station is

specifically designed to provide an effective solution for outdoor wireless ...

[Get Started](#)



Wyze Base Station Setup

Oct 12, 2023 · Setting up the Wyze Base Station is an integral step in getting the most out of your Wyze Cam Outdoor. Designed for outdoor use, this camera ...

[Get Started](#)



WBS510 & WBS210 1.1 Datasheet

Aug 9, 2016 · TP-LINK's Outdoor Wireless Base Station is dedicated to cost effective solutions for outdoor wireless networking applications. With its centralized management application, it is ...

[Get Started](#)

Wyze Cam Outdoor Troubleshooting

Wyze Cam Outdoor Siren

Troubleshooting I can't enable Travel Mode. What do I do? Wyze Cam Outdoor Setup Troubleshooting Wyze Cam Outdoor Connectivity Troubleshooting Base ...

[Get Started](#)



Contact Us

For catalog requests, pricing, or partnerships, please visit:
<https://www.persianasaranda.es>