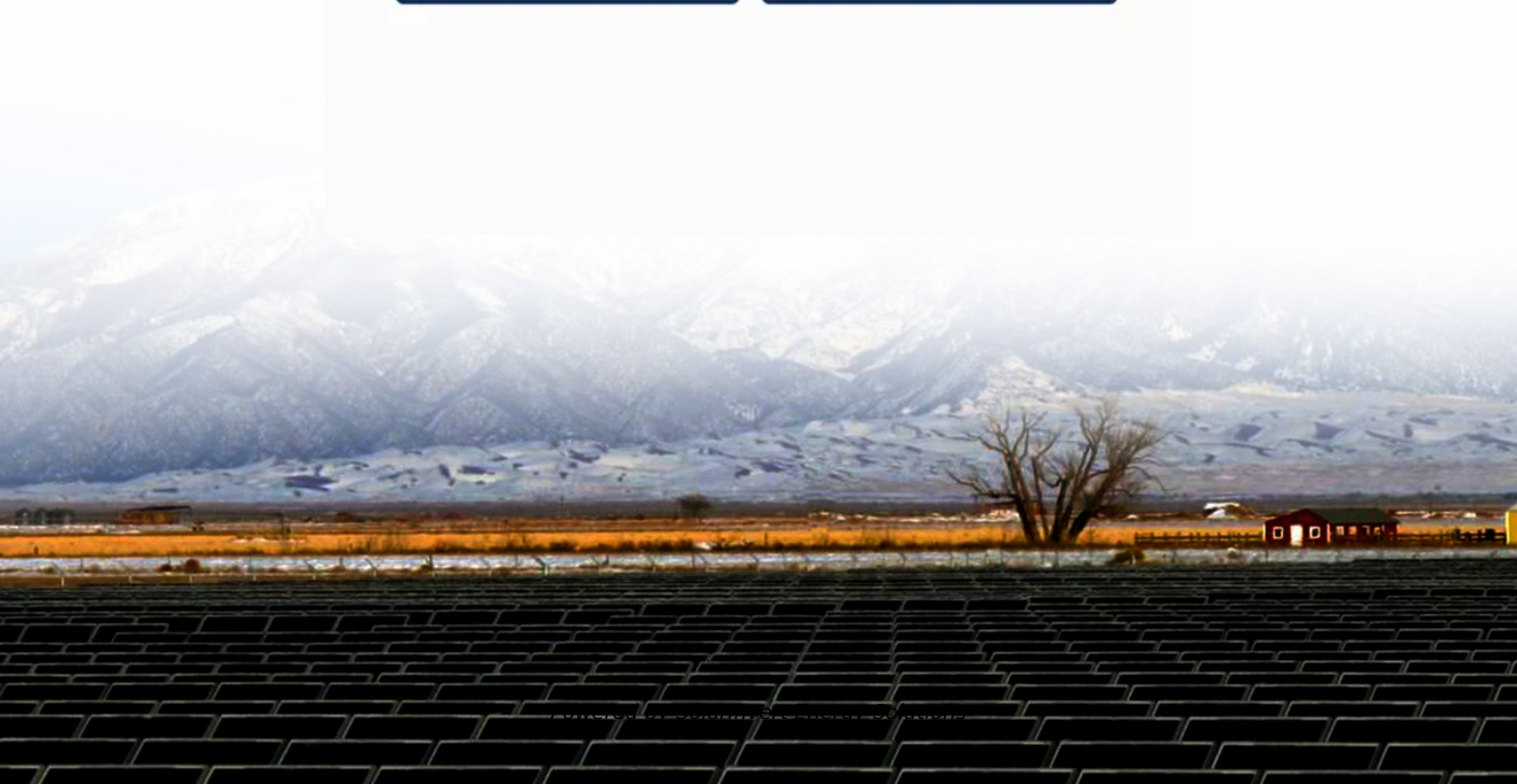


SolarInvert Energy Solutions

How many watts should solar charging at 10A



Overview

Charge controllers are sized based on the solar system voltage and current or amps. The controller must be large enough to deal with the power generated by the solar panel. If your solar panel is less than 150 watts, a 10 amp charge controller is sufficient. If it is higher than 150 watts, you will.

Charge controller amp ratings range from 1 to 60. The most widely used are 10A, 20A, 30A, 40A, 50A and 60A. Voltage ratings for charge controllers are 12V, 24V.

Solar panel output does not always match its rating. Because of how solar power works, the output on average will be lower than its rating. A 150W solar panel in.

MPPT charge controllers cost more than PWM because they are more efficient. But for a 10A charge controller, a PWM is sufficient. The following will illustrate the.

The other thing you need to consider though is the reserve power. If you add a 10% to 25% to the calculations, a 10A solar controller will be insufficient for most.

A 10A charge controller can handle 130 to 150 watts of solar power. 12V system often use 20A charge controllers, but if it is less than 150 watts, a 10A controller is enough. How many watts can a 10A charge controller handle?

A 10A charge controller can handle 130 to 150 watts of solar power. 12V system often use 20A charge controllers, but if it is less than 150 watts, a 10A controller is enough. Is a 10A Charge Controller Large Enough For My System?

Charge controllers are sized based on the solar system voltage and current or amps.

How many watts a solar panel to charge a battery?

You need around 360 watts of solar panels to charge a 12V 100ah Lithium (LiFePO4) battery from 100% depth of discharge in 4 peak sun hours with an MPPT charge controller. What Size Solar Panel To Charge 50Ah Battery?

.

Can a 10 amp charge controller be used on a solar panel?

You should not use a 10 amp charge controller on a 10 amp solar panel to avoid overloading it and increase its efficiency. Instead, the size of the charge controller should be slightly larger than the solar panel. Additionally, charge controllers have varying voltages. The most commonly used values are 12v, 24v, and 30 volts.

What size solar charge controller do I Need?

Charge controllers are sized based on the solar system voltage and current or amps. The controller must be large enough to deal with the power generated by the solar panel. If your solar panel is less than 150 watts, a 10 amp charge controller is sufficient. If it is higher than 150 watts, you will need a bigger controller.

How many watts a solar panel to charge 130ah battery?

You need around 380 watts of solar panels to charge a 12V 130ah Lithium (LiFePO4) battery from 100% depth in 5 peak sun hours with an MPPT charge controller. What Size Solar Panel To Charge 140Ah Battery?

.

How many solar panels do I need to charge a 50Ah battery?

You need around 180 watts of solar panels to charge a 12V 50ah Lithium (LiFePO4) battery from 100% depth of discharge in 4 peak sun hours with an MPPT charge controller. Related Post: [How Long Will A 50Ah Battery Last?](#)

How many watts should solar charging at 10A



How Many Watts Can a 60 Amp Charge Controller Handle?

Can your 60 amp charge controller handle your solar system? Use this simple guide to find out how many watts your controller can work with.

[Get Started](#)

How Long Does It Take to Charge a 200ah Battery?

Theoretically the two solar panels can produce 2400 watts in four hours, so it might take 4 to 5 hours to fully charge the battery. If it was an FLA battery and you recharged at 50%, that ...

[Get Started](#)



How many watts can a 10, 20, 30, 40,50,60,80, 100 amp charge ...

Nov 25, 2023 · $12 \text{ volts} \times 10 \text{ amps} = 120 \text{ watts}$. Thus, the amount of power that a 12volt 10 amp charge controller can handle is less than 120 watts. In other words, the total power generated ...

[Get Started](#)



How Many Watts Does a Car Battery Charger Use

1 day ago · A car battery charger typically uses 50 to 1,000 watts, depending on its type and charging speed. But why such a wide range? Let's break it down. Many assume all chargers

...

[Get Started](#)



How to choose the perfect charge controller

Sep 16, 2014 · When picking a solar charge controller, there are a few steps that you must follow to make sure that you get the right controller for the job.

[Get Started](#)

Confused about how much solar I can use

Apr 7, 2021 · I bought a Renogy Rover Elite, 20 amp, MPPT solar charge controller. The manual shows: Max solar input voltage is 100VDC. Max solar input power is 12v @ 260w - 24v @ ...

[Get Started](#)



What Voltage My Solar Panel Produces ...

Oct 2, 2021 · The voltage a solar panel produces can vary for a few reasons.



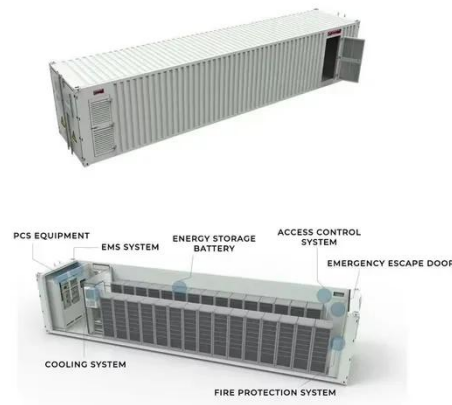
Some of the reasons are positive, some are not. The voltage produced by a ...

[Get Started](#)

How Many Watt Solar Charger for 12V Battery

Jul 22, 2025 · Wondering how many watts your solar charger needs for a 12V battery? The answer depends on your battery's capacity, sunlight availability, and charging speed--but a ...

[Get Started](#)



Everything You Should Know About Solar Amps, ...

Jun 21, 2024 · For example, if you have a solar panel that produces 10 amps at 12 volts, the power output is: $10 \text{ A} \times 12 \text{ V} = 120 \text{ W}$ $10\text{A} \times 12\text{V} = 120\text{W}$. In the ...

[Get Started](#)

RECOMMENDED SOLAR PANEL WATTAGE PER ...

Jul 24, 2023 · If you're looking to set up a solar system, then one thing you must

take into account is the wattage of your solar panels. For optimum ...

[Get Started](#)



How to Calculate Solar Panel for Battery ...

Nov 11, 2024 · To determine how many solar panels you need for battery charging, consider these steps: Identify Your Energy Consumption: Calculate ...

[Get Started](#)

How Many Watts Is a Car Battery Charger

1 day ago · A car battery charger typically uses 50 to 200 watts, but the exact wattage depends on voltage, amperage, and charging speed. Understanding this prevents underpowered or ...

[Get Started](#)



How many watts is the solar charging voltage of 10A

How many watts can a 10A charge



controller handle? A 10A charge controller can handle 130 to 150 watts of solar power. 12V system often use 20A charge controllers, but if it is less than 150 ...

[Get Started](#)

How Many Watt Solar Charger for 12V Battery

Jul 26, 2025 · Wondering how many watts your solar charger needs for a 12V battery? The short answer: It depends on your battery capacity and energy needs, but a 100W panel is a ...



[Get Started](#)



What size solar panel to charge 100ah battery?

Aug 21, 2024 · For a 24 volt 100ah lead acid battery it should be charged with a 300w solar panel. Conclusion A 10w solar panel can charge a 100ah battery ...

[Get Started](#)

How Much Power Does A Battery Charger Use?

Apr 11, 2025 · Battery chargers typically use between 5 to 100 watts of power,

depending on the type of device and charger. While chargers are designed to be energy-efficient, their power ...

[Get Started](#)



How Many Solar Panels Are Needed To Charge A 12V Battery...

Mar 14, 2025 · To charge a 12-volt battery with a capacity of 100 amp-hours at a rate of 20 amps, you need 240 watts of solar power. You can use one 300-watt solar panel or three 100-watt ...

[Get Started](#)

How many watts is solar energy 10a

Feb 2, 2024 · 1. Solar energy rated at 10A corresponds to a power output of 120 watts, calculated using the formula $P = V \times I$, where P is power in watts, V is ...

[Get Started](#)



How To Use Solar Panels With A Prewired ...

Feb 1, 2023 · A solar generator usually



contains a 12V lithium battery, a solar charge controller, and an inverter that powers regular 120V AC outlets. I use a ...

[Get Started](#)

How Many Amp Solar Charger Do I Need

Jul 26, 2025 · The answer depends on your battery capacity and energy needs--but generally, a 5-10 amp solar charger suits small setups, while larger systems require 20+ amps. Solar ...

[Get Started](#)



What Size Charge Controller You Need ...

Feb 26, 2022 · Climate conditions (cold temperatures, marine) How many solar panels do you have to meet your energy needs The number, size, and type of ...

[Get Started](#)

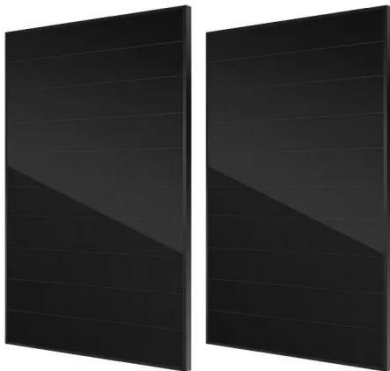


Charging a 12v 100Ah LiFePo

Jul 27, 2021 · Hello. I am learning about the LiFePo batteries and am looking for suitable charging specification. I am

assuming the charger should be capable of delivering at least as much ...

[Get Started](#)



How Long To Charge 100Ah Battery (Lead-acid, ...

Mar 21, 2023 · Find out how long to charge a 100ah battery with our solar panel and battery charger calculators. Get tips to increase charge efficiency.

[Get Started](#)

Solar Panel Amps Calculator (Watts to Amps) - ...

Mar 3, 2023 · Solar panel output: Enter the total capacity of your solar panel (Watts). Vmp: Is the operating voltage of the solar panel which you can check ...

[Get Started](#)



Solar Panel Size Calculator

Apr 9, 2023 · Use our solar panel size calculator to find out what size solar panel you need to charge your battery in

desired time. Simply enter the battery ...

[Get Started](#)



What amp should I charge my LiFePO4 battery?

Feb 15, 2023 · Figuring out what current you should charge your LiFePO4 battery is easy. There are two factors to consider: The recommended charge current ...

[Get Started](#)



How many watts is solar energy 10a

Feb 2, 2024 · Solar energy rated at 10A corresponds to a power output of 120 watts, calculated using the formula $P = V \times I$, where P is power in watts, V is ...

[Get Started](#)



Solar Panel Amps Calculator (Watts to Amps) - ...

Mar 3, 2023 · Use our solar panel amps calculator to calculate the solar panel

amps or convert solar panel watts to amps. How to use this calculator? Solar

...

[Get Started](#)



How Many Watts Should My Charger Be? A Comprehensive

...

Feb 15, 2025 · But with so many different charger options available, it can be overwhelming to determine the right wattage for your needs. This comprehensive guide will demystify the world ...

[Get Started](#)

A Quick Look & Review Of The New Goal Zero ...

Mar 22, 2020 · Goal Zero has released the new Yeti 500X Lithium portable power station/solar generator. What's new, is it the best one, and what solar panels ...

[Get Started](#)



Solar Panel Wattage per Charge Controller



May 22, 2023 · I've read the specs on a lot of charge controllers and they seem strict with how many watts of solar panels can be connected to them. I have a 40 amp Renogy running a 12V ...

[Get Started](#)

How Many Watts Solar Panel To Charge Car Battery

May 2, 2025 · A 100-watt solar panel can charge a 100Ah 12V lithium battery in 10.8 peak sun hours, or about 2 days, depending on the battery specifications and charge controller.

[Get Started](#)



Everything You Should Know About Solar Amps, ...

Jun 21, 2024 · $I = 250W / 24V = 10.42A$ 4. Practical Example Imagine you have a solar panel system with the following specifications: Solar Panel Power: 300 ...

[Get Started](#)

How to Correctly Calculate Solar Panel, Inverter, ...

Jun 14, 2025 · To figure out exactly what size solar panel batteries charge

controller and inverter you will need we have to carefully calculate and set up ...

[Get Started](#)



Contact Us

For catalog requests, pricing, or partnerships, please visit:
<https://www.persianasaranda.es>