

SolarInvert Energy Solutions

Outdoor Base Station Features



Overview

What is Damm bs422 outdoor base station?

This technology-independent solution features multiple carriers as well as simulcast in one box within either UHF or VHF frequency ranges. The DAMM BS422 Outdoor Base Station features multi-technology, multi-carriers, multi-frequency and simulcast and is core-connected, eliminating the need for any bridges or internal gateways.

What is Multitech outdoor base station bs422?

MultiTech Outdoor Base Station BS422Unlock a new level of connectivity, efficiency, and cost savings. This compact, rugged, and versatile outdoor base station offers uninterrupted connectivity in challenging conditions, with multi-technology, multi-frequency, and multi-

Why should you choose TP-Link outdoor wireless base station?

With its centralized management platform and high degree of flexibility, it is the ideal choice for providing point-to-point, point-to-multipoint, and outdoor Wi-Fi coverage. The TP-LINK Outdoor Wireless Base Station pairs professional performance with user-friendly design, making it the perfect solution for both business and home users.

What is x4000 5G SDR small cell outdoor base station?

X4000 5G SDR Small Cell Outdoor base stations enjoy great flexibility, high performance as well as very low cost of operation and ownership. "Stand Alone" operation is possible which enables the 5G Base station to connect remote terminals without need for external network elements.

What is a x4000 5G base station?

"Stand Alone" operation is possible which enables the 5G Base station to connect remote terminals without need for external network elements. Custom designed for private 5G mobile networks using 5G FR1 radio

spectrum. The X4000 5G 'All-in-One' includes Radio Unit (RU), Distributed Unit (DU) and Centralised Unit (CU).

What is a 5G small cell base station?

5G Small Cell indoor and outdoor 'all-in-one' radio access for private 5G wireless networks. 5G Small Cell Base Stations (Micro Cell, Femtocell) offer advanced features and “stand alone” capability for private networks.

Outdoor Base Station Features



Weightless AMI Meters Turnkey Products , Ubiik

This weatherproof Weightless(TM) Outdoor Base Station creates a low-power, wide area network (LPWAN) suitable for IoT devices. Data collected by the outdoor ...

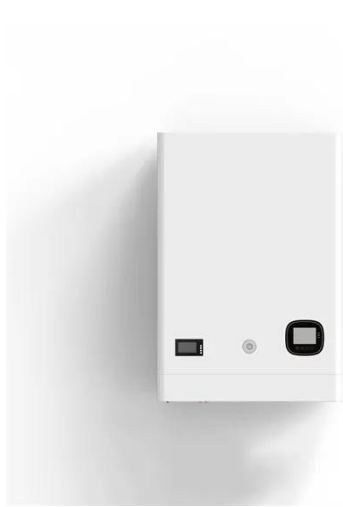
[Get Started](#)

X4000 5G RAN 'All-in-One' gNodeB

5G Small Cell indoor and outdoor 'all-in-one' radio access for private 5G wireless networks. 5G Small Cell Base Stations (Micro Cell, Femtocell) offer advanced ...



[Get Started](#)



DAMM MultiTech Outdoor Base Station BS422

The DAMM MultiTech Outdoor Base Station BS422 is a cross-technology one-box solution offering multiple technologies: TETRA, DMR Tier III, TEDS and ...

[Get Started](#)

DMR Outdoor Base Station DS-6250 , DMR Repeaters

Discover our DMR Trunking Cube Base Station DS-6250, a highly integrated solution designed with fast deployment and operation simplicity in mind.

[Get Started](#)



Base Station BS422

The DAMM MultiTech Outdoor Base Station BS422 is a cross-technology one-box solution offering multiple technologies: TETRA, DMR Tier III, TEDS and Analogue. This technology ...

[Get Started](#)

Xiaomi Outdoor Camera Base Station

Xiaomi Outdoor Camera Base Station: Outstanding performance with exceptional features, Supports local storage and is secure and energy-efficient, Strong ...

[Get Started](#)



JRC 5G Base Station

Aug 19, 2025 · 5G Base Station JRC provides Private 5G system, including the compact, lightweight 5G RU with

Applications



superior performance and
5GC/BBU/FHGW ...

[Get Started](#)

BS422 MultiTech Outdoor Base Stations from ...

The DAMM BS422 Outdoor Base Station features multi-technology, multi-carriers, multi-frequency and simulcast and is core-connected, eliminating the need for ...



[Get Started](#)



427103147-Data-Sheet-Nokia-Flexi-Zone-Multi-band-Outdoor-Micro-BTS...

Jun 17, 2021 · Design and Capabilities
The Flexi Zone Multi-band Outdoor Micro Base Station features a compact single enclosure, designed for 'simple installations, whether pole mounted ...

[Get Started](#)

WBS510 , 5GHz 300Mbps Outdoor Wireless Base ...

May 10, 2020 · TP-LINK's 5GHz 300Mbps

* Outdoor Wireless Base Station is specifically designed to provide an effective solution for outdoor wireless ...

[Get Started](#)



TetraFlex® Outdoor BS422

Lets you build coverage in a completely new way. The world's only outdoor base station featuring multiple technologies in one single core-connected system: TETRA, DMR Tier III, TEDS and ...

[Get Started](#)

Complete Guide to 5G Base Station ...

Nov 17, 2024 · Outdoor base stations integrate all essential systems into a single Integrated Cabinet, designed to endure harsh conditions like direct sunlight, ...

[Get Started](#)



MultiTech Outdoor Base Station BS422

May 14, 2024 · DAMM® MultiTech Outdoor Base Station BS422 tivity,



efficiency, and cost savings. This compact, rugged, and versatile outdoor base station offers uninterrupted connectivity in ...

[Get Started](#)

Set up you Outdoor Camera SE , Cameras

How to set up your Roku Outdoor Camera SE Your Roku ® Outdoor Camera SE delivers a Full HD image with great features like color night vision, instant ...

[Get Started](#)



Unity(TM) Outdoor Integrated Base Station 5W

May 9, 2025 · This compact base station integrates the 5G baseband module and radio module, pre-installed the SageRAN`s Engine(TM) 5G L2 L3 software, to provide a high performing 5G ...

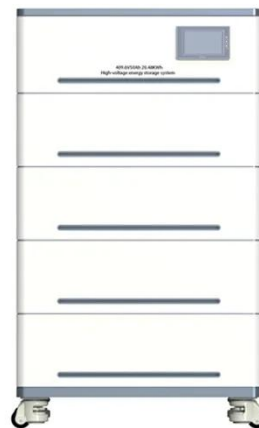
[Get Started](#)

Xiaomi Outdoor Camera Base Station, ...

Sep 11, 2024 · Compatible with the

Chinese manufacturer's BW300 and BW500 outdoor surveillance cameras, the Xiaomi Outdoor Camera Base Station gives ...

[Get Started](#)



RTX 8660 Outdoor Base Station Dubai

Aug 18, 2025 · RTX 8660 Outdoor Base Station The RTX 8660 Outdoor Base Station Dubai system presents itself as the solution Outdoor (IP65) offering IP ...

[Get Started](#)

M900 Outdoor DECT Base Station

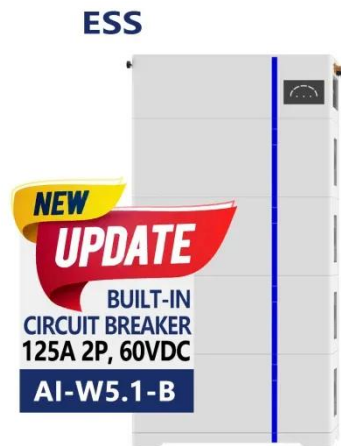
Up to 1,000 registered base stations in a multicell setup* using LAN-synchronisation Up to 100 repeaters in a multicell setup(2) Up to 8 narrowband or 4 wideband calls per base station in ...

[Get Started](#)



Outdoor Station

ZKTeco's VEX-B24A is a smart outdoor video station with Android 6.0 operating system that seamlessly integrates video



intercom capabilities with facial recognition, offering a ...

[Get Started](#)

Wyze Cam Outdoor Features

May 23, 2025 · This feature lets you use the camera without an internet connection, and it can be enabled on the camera or Base Station. To enable ...

[Get Started](#)



Excellent Coverage BaiCells Base Stations

The sleek, elite-quality Base Stations offer enhanced indoor and outdoor coverage and are jam-packed with exceptional features. Find the BEST Base Station here.

[Get Started](#)

Data Sheet Nokia Flexi Zone Multi-Band ...

Jul 24, 2025 · Flexi Zone Multi-band Outdoor Micro Base Station is a of

technology and bands expected for outdoor small cell compact outdoor ...

[Get Started](#)



Outdoor base station

Vicinity's 4+5G Integrated High Power Base Station offers localized coverage in high-density areas or where macro base stations face limitations. These cost-effective, compact ...

[Get Started](#)

DMR Outdoor Base Station DS-6250 , DMR ...

Discover our DMR Trunking Cube Base Station DS-6250, a highly integrated solution designed with fast deployment and operation simplicity in mind.

[Get Started](#)



DAMM Cellular Systems Applications , DMR ...

Jul 26, 2024 · DAMM MultiTech Outdoor Base Station BS422 is the world's only



outdoor base station featuring multiple technologies in one single core ...

[Get Started](#)

Contact Us

For catalog requests, pricing, or partnerships, please visit:
<https://www.persianasaranda.es>